



Jeffery Hale
Saint Brigid's

Adapting Services During the Pandemic:

The Example of Jeffery Hale-Saint Brigid's and Its
Partners

Anne Duchesne, MSW in Program Evaluation, B.Ps.,
Planning, Programming, and Research Officer, English
Language Services





Presentation Contents



01

JHSB Video

02

The English-Speaking Population

03

JHSB: A Designated Establishment

04

Services and Partners

05

MARCH 2020

06

Extraordinary Initiatives

07

The Day Centre and Adapted Activities

08

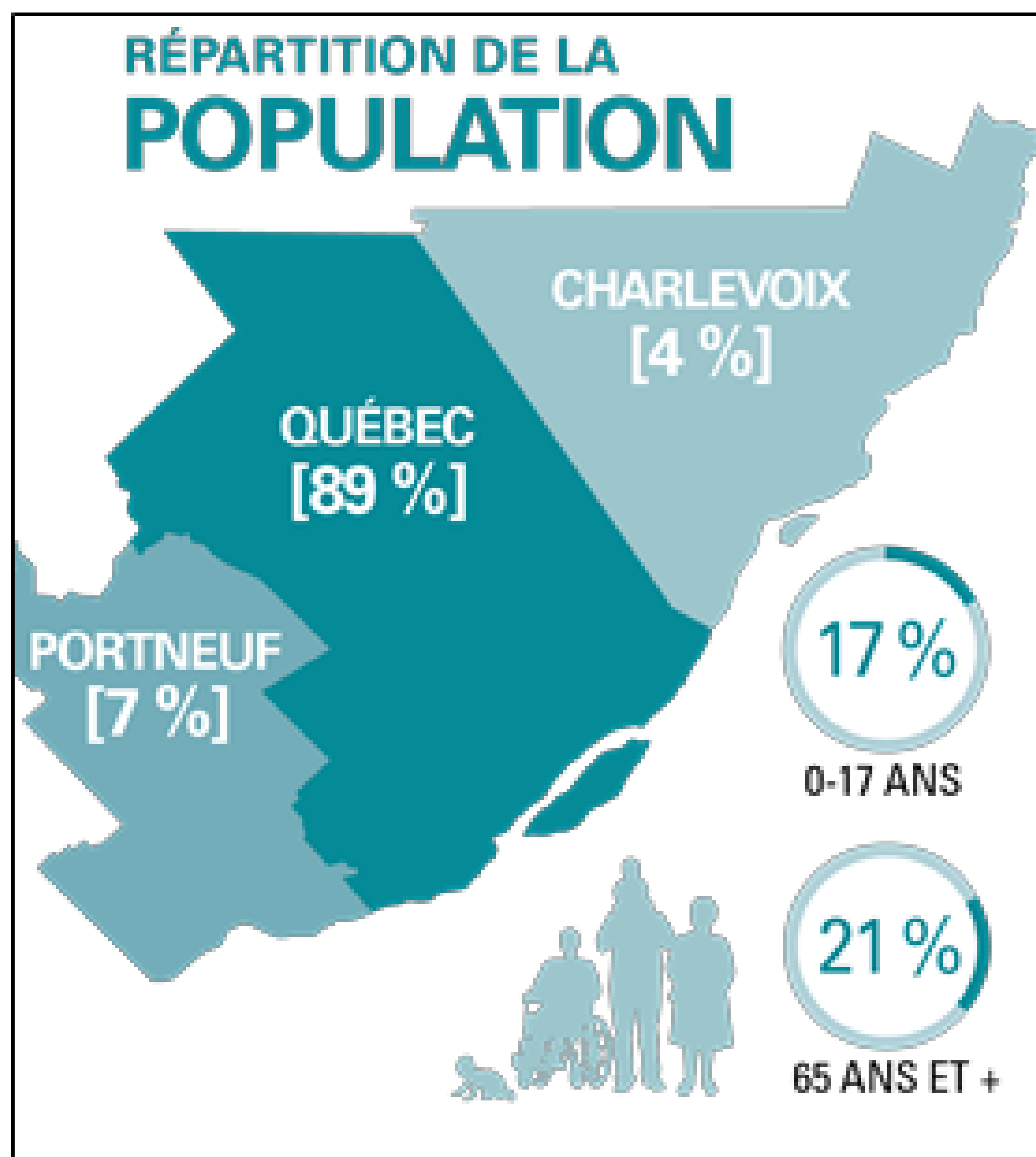
Thanks

The Capitale-Nationale Region's English-Speaking Population



<https://www.youtube.com/watch?v=Rm7VzQTSVS8>

The Capitale-Nationale Region's English-Speaking Population



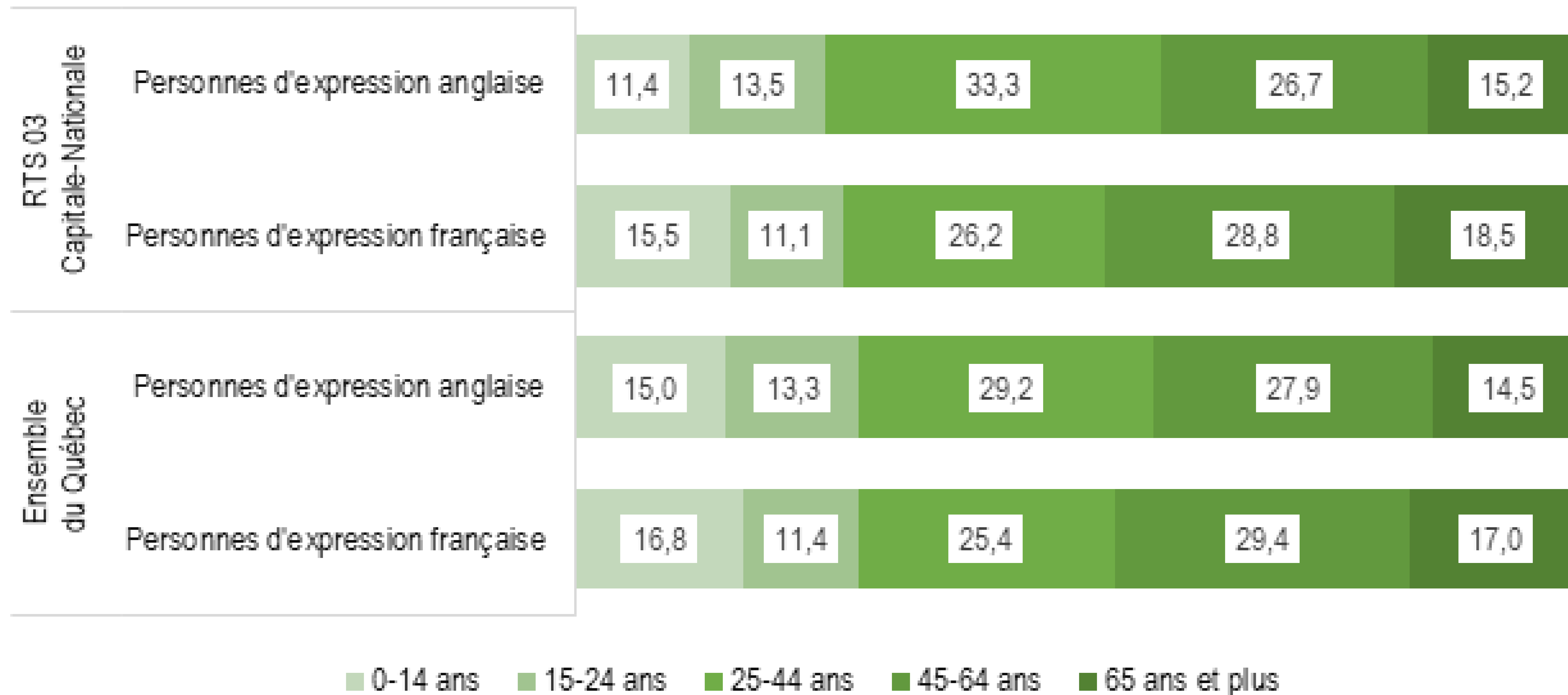
There are **1,097,925** English-speaking people in the province of Quebec, which represents **13.8%** of the population.

In RTS 03, **14,205** people are English-speaking, which represents **2.0%** of the region's population (CHSSN, 2018).



Jeffery Hale
Saint Brigid's

The Capitale-Nationale Region's English-Speaking Population





Designated Establishment Affiliated with the Capitale-Nationale CIUSSS



Jeffery Hale – Saint Brigid's is affiliated with the Capitale-Nationale CIUSSS.

It is the only designated establishment in the Capitale-Nationale region. In other words, it is recognized under Article 29.1 of the Charter of the French Language and required to make all health and social services that it offers available in English to English-language speakers.

The establishment acts in an advisory capacity and provides support to the Capitale-Nationale CIUSSS.

Jeffery Hale – Saint Brigid's works in close collaboration with all establishments in the territory to ensure the accessibility, consistency, and suitability of services offered to English-speaking users.



Designated Establishment Affiliated with the Capitale-Nationale CIUSSS

Residential and long-term care (CHSLD):

- Saint Brigid's residence (142 beds)
- Jeffery Hale residence (99 beds)

Specialized geriatric services:

- Community geriatrics unit
- Palliative care
- Specialized geriatric and gerontopsychiatric consultations

General and physical health (minor emergencies)

Refugee health clinic

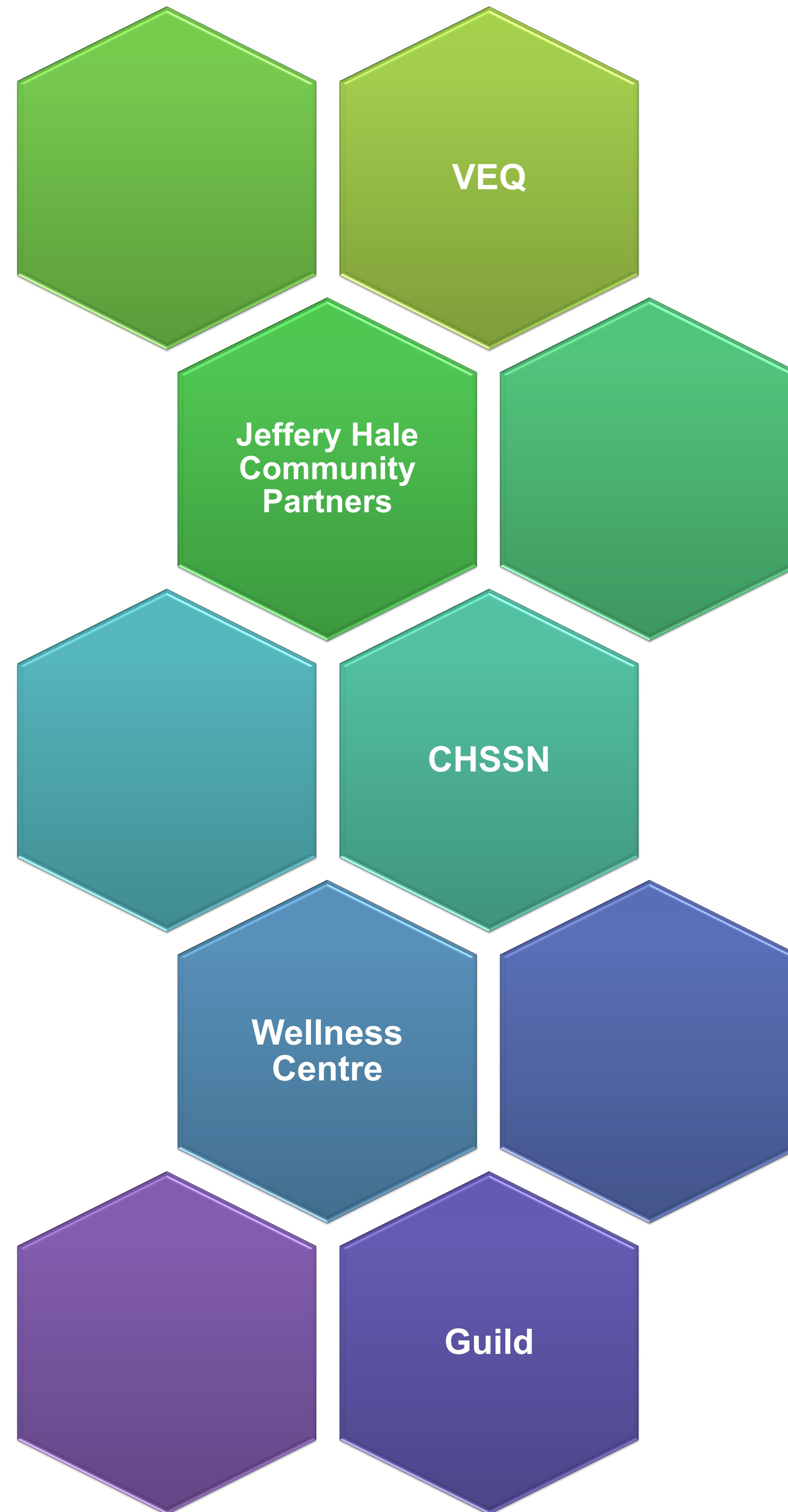
Jeffery Hale English-language community services (CLSC):

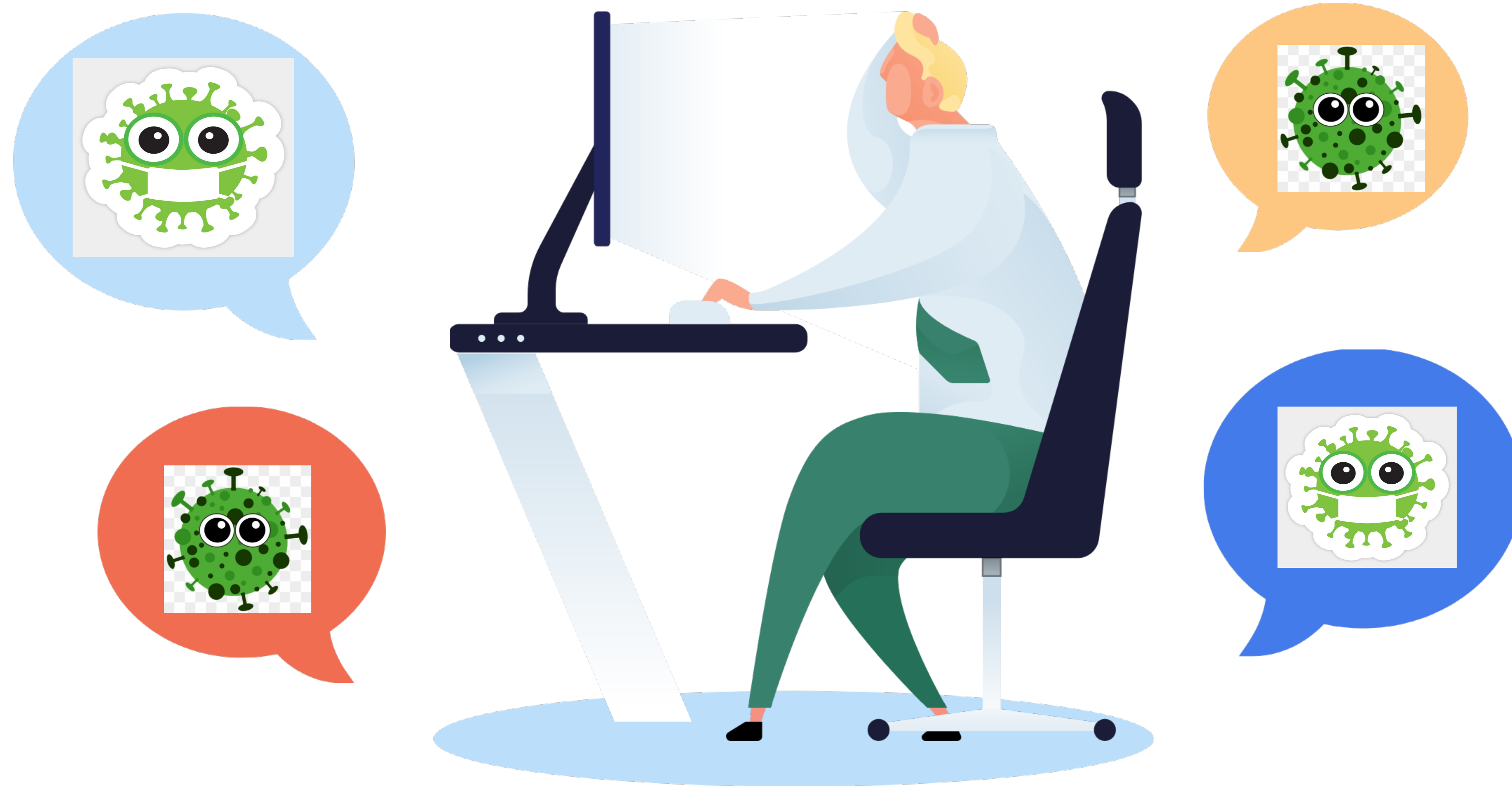
- Bilingual access desk
- Youth services
- Mental health
- ID-ASD-PD
- At-home support
- Day centre



Jeffery Hale – Saint Brigid's operates a residential and long-term care facility (CHSLD) while also fulfilling complementary mandates as a hospital and provider of community services for the English-speaking population.

Partners





MARCH 2020

Extraordinary Initiatives



Virtual consultations



Tablet-based communication



Interventions by family caregivers



Newsletters



Employee recognition



Lighting up of buildings



Patient navigation team



Communication with teams



Daily tactics meetings



Greeting cards from residents to families



The Day Centre

The only day centre that has stayed open (in a different form) since the start of the pandemic.

Adapted Activities



Client follow-up



Grocery and pharmacy shopping



Frozen meals – La Butineuse

COVID-19



1 weekly letter



1 phone call per week



Home exercise routine

Information
and news

Cognitive
activities

Exercise
routine

December 8th, 2020

What to expect in the next few weeks.

- 1) Just a reminder that the Day Center will be closed from December 23rd to January 4th inclusively. Know however, that the Community Services will be open on December 29th and December 30th
418 684-5333 ext 1580
- 2) The week of December 14th you will receive a special delivery! Santa Claus and his elves have arrived in town earlier this year!



Nutcracker puzzle

There are ten differences in these pictures. Can you find them all?



- 6) Do some mild exercises. It is really important to keep moving for your health. It will help out your overall physical health but also your mental health. Use the exercise book we gave you at Christmas, go on internet to find easy routines for seniors, take a walk in the hallway. Any movement is better than none. You can do it!



Special Christmas Activities



“The kindest group of people I’ve ever know. You all do wonderful work. Happy Holifays!”

“What an amazing group of dedicated and caring people. Happy holidays to all of you! “



“...Thank you for all that you do for the community especially during these difficult times. God bless you all”



Jeffery Hale
Saint Brigid's

Together, we can all do a
little more to help
someone...

Thank you for your
attention!