



Community Learning Centres

QUEBEC'S COMMUNITY SCHOOL NETWORK

The Community school concept is a global education strategy that integrates community resources into schools for student success. This integrated approach to academics and community-based programming contributes to improved student learning, stronger families and healthier, more vital communities.



CLC ESSENTIALS



PARTNERSHIPS/
COMMUNITY



EVALUATION/DATA
COLLECTION



FAMILY



EARLY
CHILDHOOD



STUDENT SUCCESS/
ACADEMICS



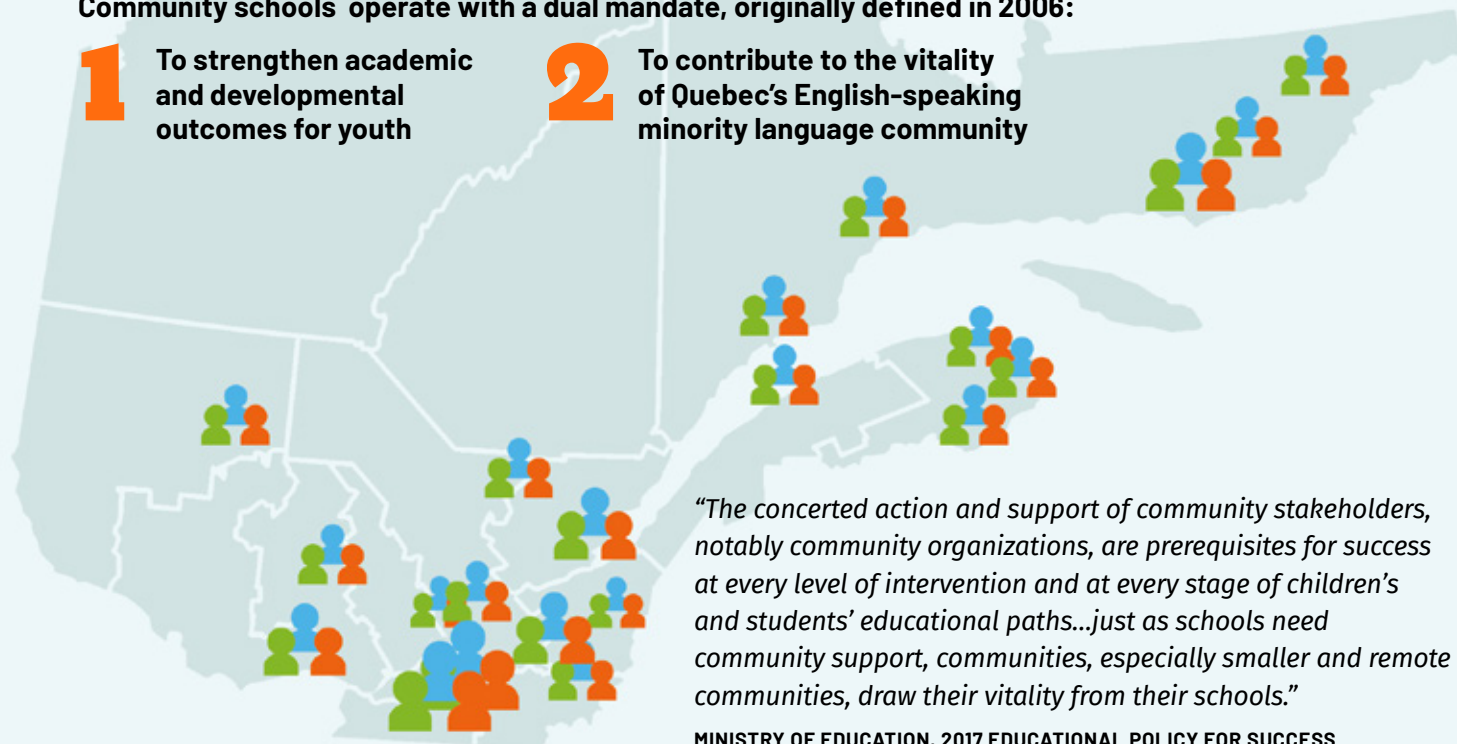
STUDENT
SUCCESS/HEALTH
AND WELLNESS

Community Learning Centres (CLCs) are a network of more than 90 English community schools located in urban, rural, and remote communities across Quebec. Each community school adapts its partnerships, services and programming to the unique and ever-changing needs of their local reality.

Community schools operate with a dual mandate, originally defined in 2006:

1 To strengthen academic and developmental outcomes for youth

2 To contribute to the vitality of Quebec's English-speaking minority language community



“The concerted action and support of community stakeholders, notably community organizations, are prerequisites for success at every level of intervention and at every stage of children’s and students’ educational paths...just as schools need community support, communities, especially smaller and remote communities, draw their vitality from their schools.”

MINISTRY OF EDUCATION, 2017 EDUCATIONAL POLICY FOR SUCCESS

In community schools, the **school Principal** collaborates with a **Community Development Agent (CDA)** to coordinate the development of local partnerships, programs, resources, and services for students, families and community members. CDAs sit on regional development tables to strengthen local collaborations and help school staff leverage community resources.

Community organizations and businesses can collaborate with community schools by:

- ▶ Sharing their expertise with students and staff members
- ▶ Developing internship opportunities for students
- ▶ Participating in strategic planning sessions for school improvement
- ▶ Making a material donation (e.g. books, gardening supplies)
- ▶ Making a financial contribution (e.g. breakfast program)

LEARN's Provincial Resource Team (PRT) supports the community school network by providing a framework for development, strategic networking opportunities, project and grant opportunities, digital tools and resources, and ongoing professional development.

For more information about Community Schools in Quebec (CLCs), please **contact the PRT**
prt@learnquebec.ca

For information on your local community school please contact:
