



[learnquebec.ca](https://learnquebec.ca)

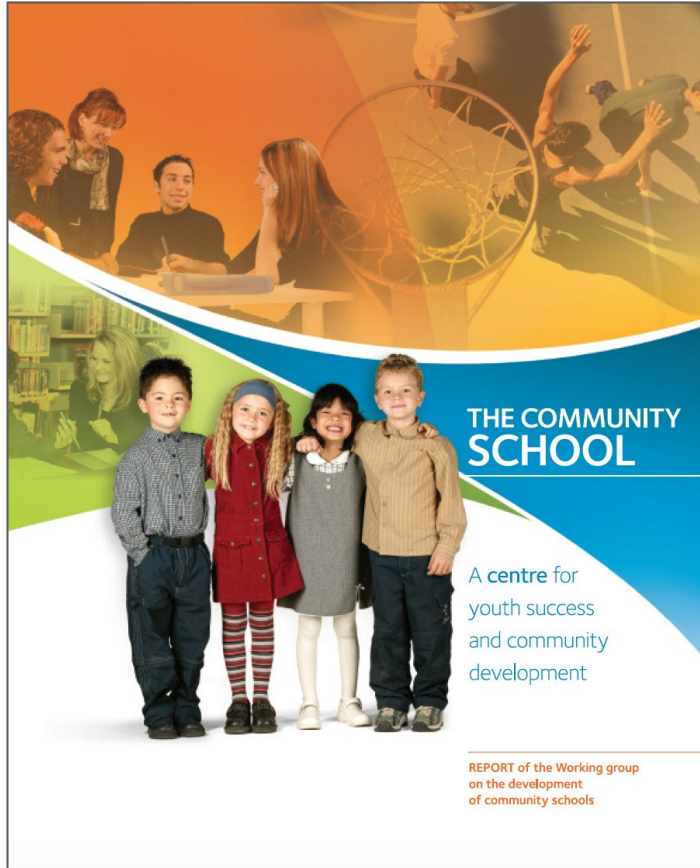
# WHAT THE COMMUNITY SCHOOL APPROACH BRINGS TO QUEBEC'S ENGLISH SCHOOL SECTOR: CONNECTIONS, CONNECTIONS, CONNECTIONS

Presenters:

Debbie Horrocks, Benjamin Loomer, Dr. Patricia Lamarre

QUESCREN – October 13, 2022





“Our duty is to  
produce  
citizens who will  
build the  
communities of  
tomorrow.”

Quebec Ministry of  
Education 2005



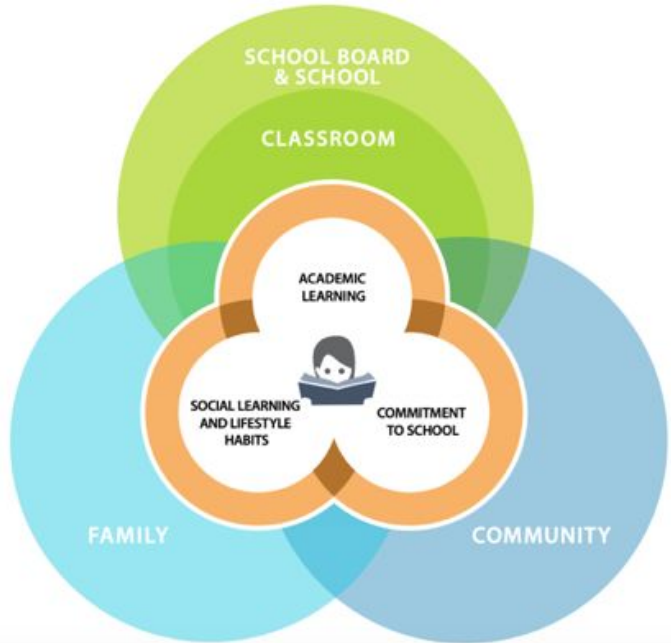
# Sixteen Years – A Quiet Success Story!

- Hubs for education and community resources
- Community Development Agents (CDA)
- CLC programming complements what happens in the classroom
- Network of 90+ schools, in all 10 English school boards



# A CLC is a Community School

Community Schools  
are an ecosystem  
of learning  
opportunities -  
both inside and  
outside of the  
school



[http://www.education.gouv.qc.ca/fileadmin/site\\_web/documents/education/jeunes/Referentiel-milieu-defavorise-AN.pdf](http://www.education.gouv.qc.ca/fileadmin/site_web/documents/education/jeunes/Referentiel-milieu-defavorise-AN.pdf)



# Provincial Resource Team (PRT)

- Increase impact of community school approach through collaboration
- Catalyst
- Professional development
- Research and evaluation
- Networking



# Three Premises of CLCs Today

- School-community collaborations contribute to:
  - Improving student academic success
  - Creating positive school climate
  - Improving students' social, emotional and academic well-being
- Resources available to students, families, community
- Community vitality



# Evaluations in first decade of implementation

- West Ed
- Qu'Anglo

CLCs show their potential and best practices and winning conditions are identified

Challenges - sustainability and school board and Ministry buy-in





# Enabling Potential

- Society has collective role to play - it takes a village
- Mobilize the resources of a community or region to strengthen the school and help meet each child's individual needs, interests and goals
- Learning that happens outside of school (sports, culture, outdoor activities, languages, music), can be as or more important to life success than what happens inside school



# Strategic Community Partnerships: A Key Piece in Building Connections



**elan**  
english language  
arts network



**La Tablée  
des Chefs**

QUEBEC ANGLOPHONE  
HERITAGE NETWORK  
QAHN



Secrétariat aux relations  
avec les Québécois  
d'expression anglaise  
**Québec**



**CANADIAN  
PARENTS  
FOR FRENCH**  
QUEBEC &  
NUNAVUT



Literacy:  
Learning for Life.  
L'alphabétisation,  
Une leçon pour la vie.



**QC  
GN** Quebec  
Community  
Groups  
Network  
[www.qcgn.ca](http://www.qcgn.ca)



Centre Montréalais pour  
les troubles d'apprentissage  
Montréal Centre for  
Learning Disabilities

**ROCLD** REGROUPEMENT DES ORGANISMES  
COMMUNAUTAIRES QUÉBÉCOIS  
DE LUTTE AU DÉCROCHAGE



**ami québec**  
Agir contre la maladie mentale  
Action on mental illness



# Strategic Education Partnerships



Centre de services scolaire du Littoral



# Partnership Outcomes...

- Health and wellness of students & staff
- Access to quality and relevant arts & culture experiences
- Developing life skills and healthy habits
- Environmental awareness and education
- Supporting families
- Intergenerational learning opportunities
- Schooling as a trajectory



# Connections Strengthen the Fabric of a Local Community





# Tablée des chefs



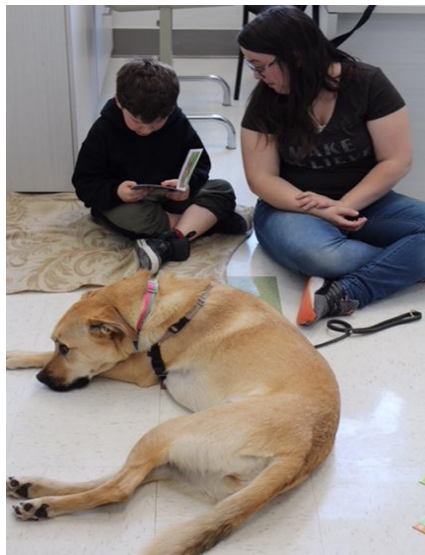
Seaway CLC - Kitchen Brigades



Courtesy of the Sherbrooke Record  
June 8, 2022



# Mental Health Resources



Valcartier Elementary Zootherapy



Beurling Academy Zen Den



Franklin Elementary Sensory Room



# Arts and Culture and Community Engagement



Comic-Zine



Exploring Belonging Through Puppets



Take Action Project: Mask Recycling





# Engaging Young Families



Mother Goose Program



Goodnight Bag



# Connecting Classrooms and the Environment



Releasing Baby Salmon



School Community Garden



School Community Garden



# Intergenerational Learning Opportunities



Small Engine Repair



Building Bat Houses



Irish Reading Buddies





# Education for Reconciliation



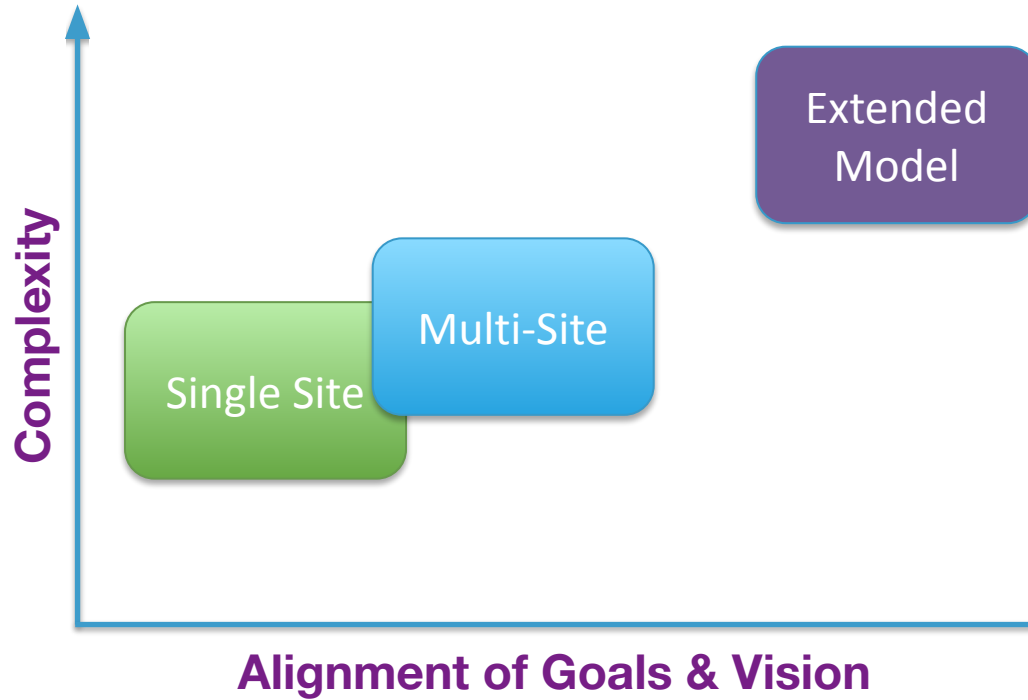
Blanket Exercise



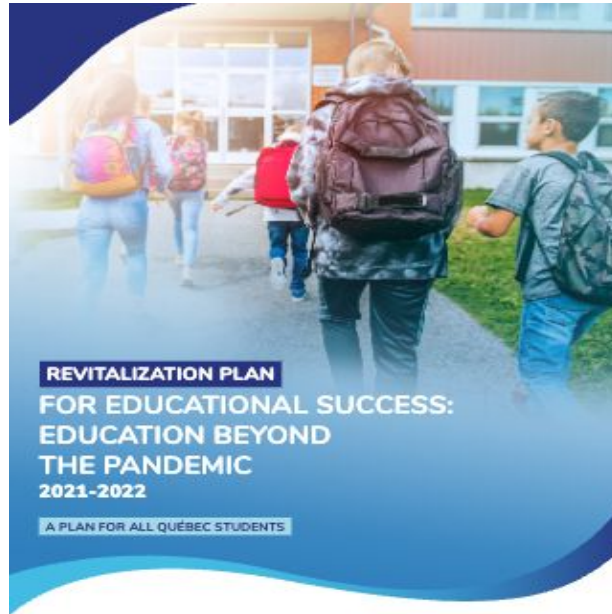
# Sleep, Creep, Leap – Scaling Up by Extension



# CLC Models at a Glance



# Revitalizing Schools Post-Pandemic



Votre  
gouvernement

Québec



Ça va bien aller.



# Increasing Reach

- Strategic decision for school boards - expand CLC model to benefit more schools
- Increased access to community-based programming
- Stronger, deeper partnerships
- Help CLCs achieve their highest potential





# Unexpected Outcomes for an OLM School Sector and its Communities

- Partnerships between the French and English-speaking communities
- Decreased isolation of the English-speaking communities in many regions
- Ongoing collaborations with various community and government agencies - a much needed network



# Growing Recognition of Community School Approach among Educational Stakeholders

- School boards are showing greater engagement with community school approach
- Ministerial support
- Integration of PRT to LEARN Quebec
- Maintaining commitment to CLC approach remains critical - as does ensuring sustainability (Entente funding)



# What Do We Know So Far.....

- “Connect, connect, connect”!
- Connecting and collaboration
- Blurring the lines of who owns success
- Strength of collective engagement and ownership



# Whole School, Whole Community, Whole Child



Source: [Association for Supervision and Curriculum Development \(ASCD\)](#)



# Thank You!

For more information:

Debbie Horrocks - [dhorrocks@learnquebec.ca](mailto:dhorrocks@learnquebec.ca)

Ben Loomer - [bloomer@learnquebec.ca](mailto:bloomer@learnquebec.ca)

Dr. Patricia Lamarre - [patricia.lamarre@umontreal.ca](mailto:patricia.lamarre@umontreal.ca)

