

Did you know that English-speaking kindergarten children are more vulnerable?

Source: Quebec Survey of Child Development in Kindergarten, 2017, Institut de la Statistique Québec

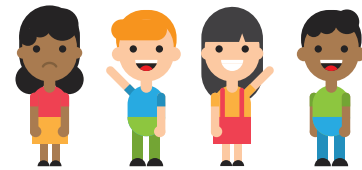
Children deserve early intervention and equal opportunities to develop skills that will promote their success in life.



1 out of 3

kindergarteners whose mother tongue is English are likely to be considered vulnerable

compared to



1 out of 4

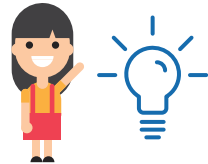
of their French-speaking peers

What are the developmental expectations for kindergarten-aged children?

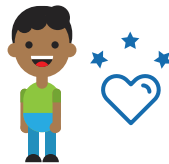
A child's development is measured by his or her ability in five areas:



1 Communication Skills and General Knowledge



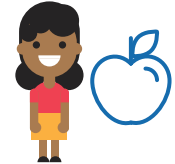
2 Cognitive and Language Development



3 Emotional Maturity

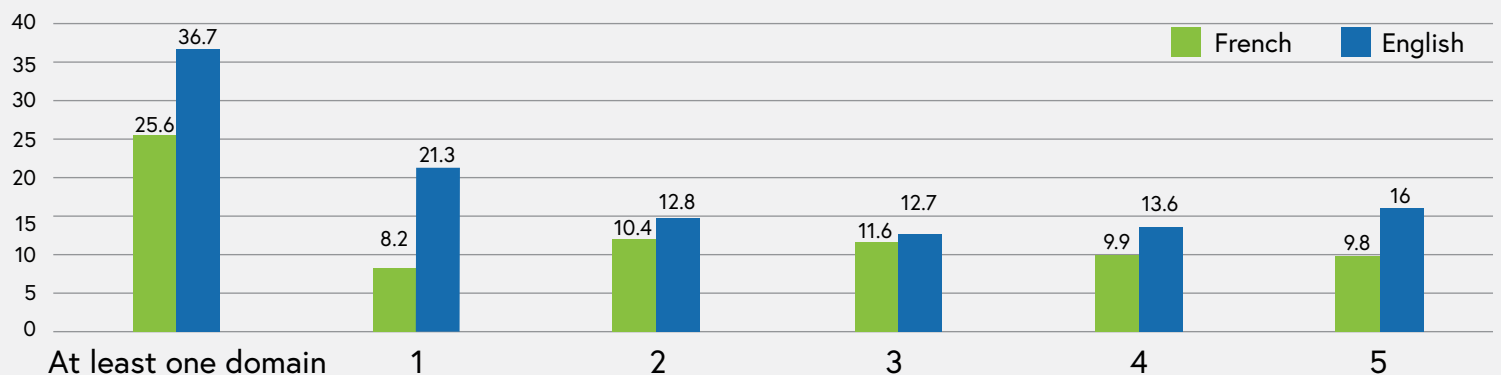


4 Social Competence

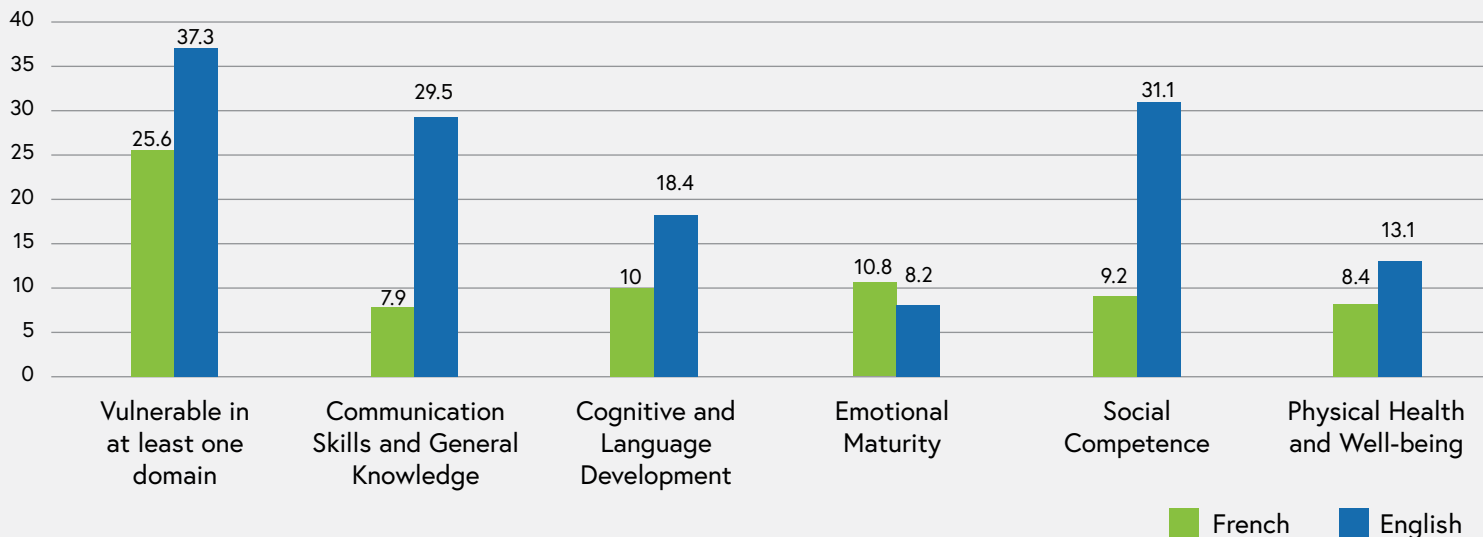


5 Physical Health and Well-being

Proportion of vulnerable children in kindergarten by domain of development and in at least one domain according to mother tongue, Quebec, 2017



Capitale-Nationale: Proportion of vulnerable children in kindergarten by domain of development and mother tongue, 2017



Source: Quebec Survey of Child Development in Kindergarten, 2017, Institut de la Statistique Québec

Speaking French or English should not determine early childhood disparities in development. The [ISQ survey data](#) shows developmental gaps requiring local attention in all health regions of Quebec.



What Can We Do?



Community Groups & Organizations

- Offer services to families with very young children
- Support and encourage positive parenting and parental engagement
- Raise awareness with local partners



Health & Education

- Provide screening, evaluation, and intervention in English
- Identify children's strengths and needs within their communities
- Target programs to issues and areas of greatest need



Municipalities & Governments

- Increase services for early childhood, social housing, and free family activities
- Invest in the early childhood needs of diverse sociolinguistic groups
- Address issues and areas of greatest need with specific policies and programs

More information

[Jeffery Hale Community Partners \(JHCP\)](#)

- Phone: 418-684-5333 ext 1265
- Email: info@jhpartners.net