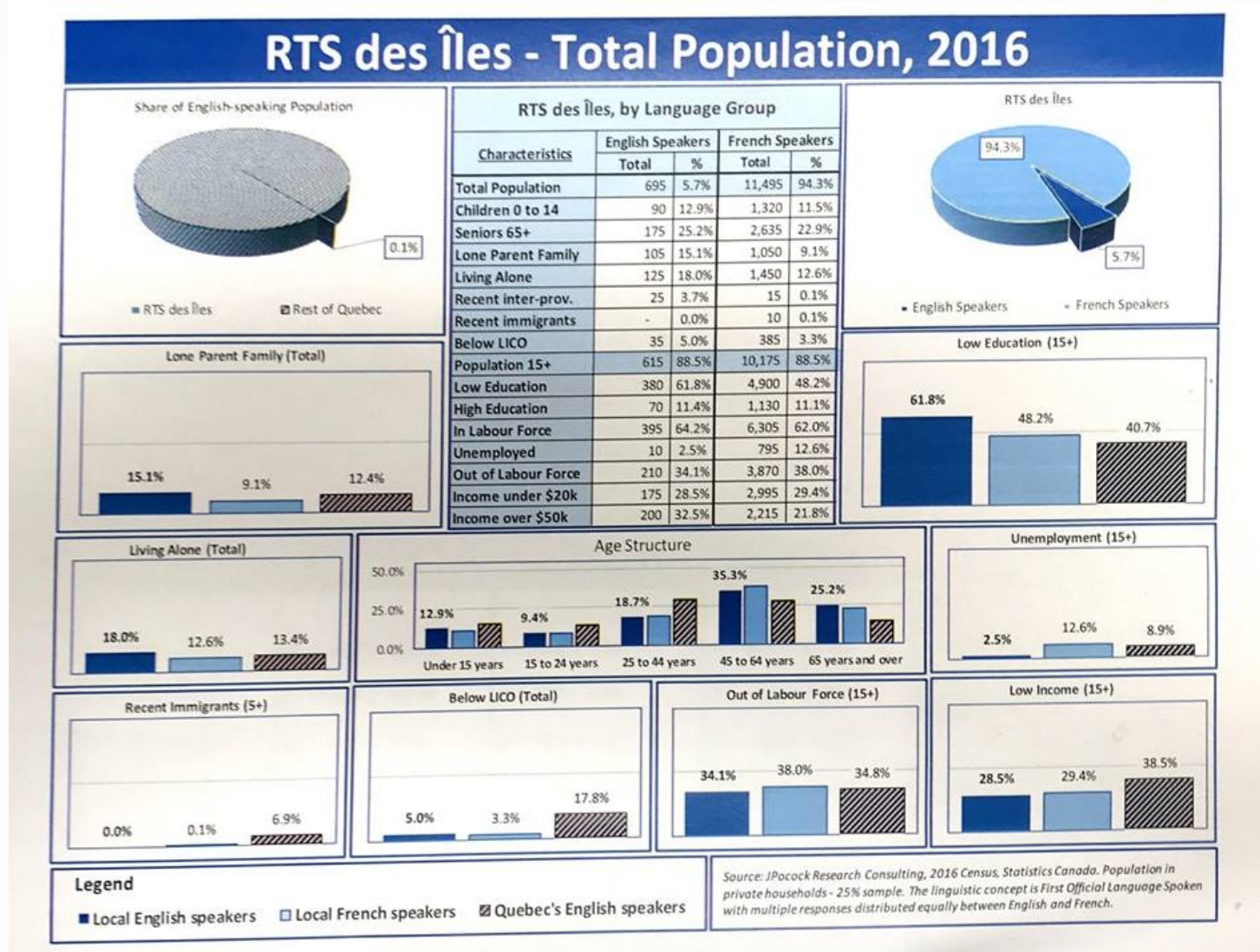


Panel discussion: What would be lost if there were no more English-Language Schools?

Helena Burke,
Executive Director, CAMI
Magdalen Islands, Quebec

COMMUNITY DEMOGRAPHICS

- 5.7% of total population
- 12.9% of total ES population is aged 0-14
- 28.5% of total ES population (15+) earns less than \$20k vs 29.4% in FS community
- 32.5% of total ES population earns more than \$50k vs 21.8% in FS community
- 5.0% of total ES population is living below LICO vs 3.3% in FS community
- 15.1% of ES population is living in lone parent household vs 9.1% in FS community
- 62.3% of total ES population aged 15+ has just a high school diploma or less vs 48.2% in FS community
- 38.5% of the 25-44-year-old cohort has just a high school diploma or less
- 11.5% of the total ES population holds a university degree or higher





What becomes of the graduates of the English language school? The French language school?

- PAST GRADS: PEI OR MARITIME PROVINCES
- CURRENT GRADS: MONTREAL OR LENNOXVILLE
- UNILINGUAL GRADS: DO NOT RETURN
- BILINGUAL GRADS: RETURN AND INTEGRATE INTO PROFESSIONAL LABOUR FORCE
- NEWEST TREND: DO NOT LEAVE TO PURSUE STUDIES



What becomes of the graduates of the French language school?

- Most graduates of the French language school go to Quebec City because of the pre-existing Francophone Magdalen Island Community



What challenges face the English language community?

- High drop out rates
- High dependence on Employment Insurance program
- Low levels of bilingualism and isolation
- Educational programs that are relevant to the community culture
- Critical mass
- Low levels of education and low value for formal education
- Challenges concerning proper nutrition, drug and alcohol dependency and other health related issues
- Economically vulnerable
- Ageing population = decrease in school population
- Access to social services



How does the English language school support the community?

- Part of the CLC Network
- Close collaborations with community organizations
- Supporting several community strategies:
 - Bright Beginnings
 - Youth Strategy
 - Seniors Strategy,
 - Community Innovation Project
 - Municipal Family Policy
 - Community Mobilization Strategy

This support is made possible by the MEES special measures and the Quebec-Canada Entente



FOR MORE INFORMATION

HELENA BURKE
EXECUTIVE DIRECTOR
CAMI

787 CHEMIN PRINCIPAL, GROSSE ILE, QUEBEC, G4T 6B5

EMAIL: HELENA@MICAMI.CA

TEL.: (418) 985-2116 #1