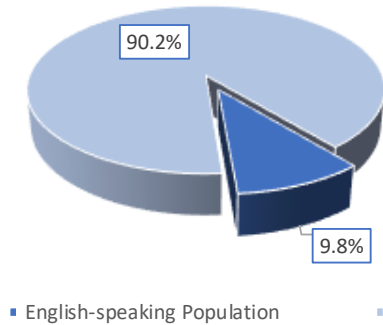


Rosemont-La Petite-Patrie* - English-speaking Population, 2016

Rosemont-La Petite-Patrie*



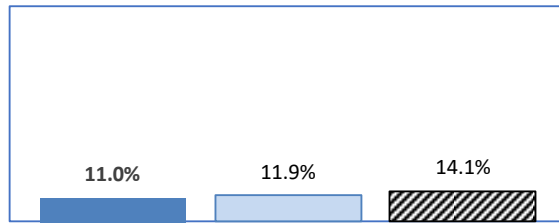
Rosemont-La Petite-Patrie*, by Language Group

Characteristics	English-speaking Population		French-speaking Population	
	Count	Percentage	Count	Percentage
Total Population	12,870	9.8%	117,075	89.1%
Children 0 to 14	1,110	8.6%	17,310	14.8%
Seniors 65+	1,650	12.8%	15,045	12.9%
Lone Parent Family	1,410	11.0%	13,985	11.9%
Living Alone	3,165	24.6%	30,995	26.5%
Recent inter-prov.	605	4.8%	520	0.5%
Recent immigrants	1,400	11.2%	7,075	6.4%
Below LICO	3,720	28.9%	27,260	23.3%
Population 15+	11,755	91.3%	99,758	85.2%
Low Education	3,810	32.4%	30,563	30.6%
High Education	4,595	39.1%	36,548	36.6%
In Labour Force	8,160	69.4%	69,800	70.0%
Unemployed	800	9.8%	5,063	7.3%
Out of Labour Force	3,590	30.5%	29,958	30.0%
Income under \$20k	4,710	40.1%	32,363	32.4%
Income over \$50k	2,600	22.1%	29,220	29.3%

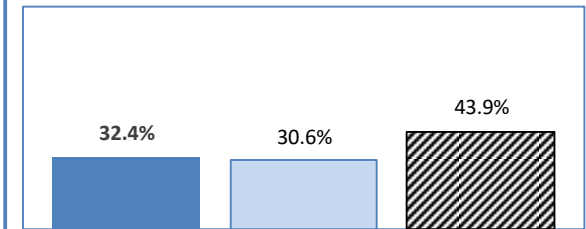
*The figures shown are for the combination of CLSC Rosemont and CLSC La Petite-Patrie. (96.4% comparable to the arrondissement of Rosemont-La Petite-Patrie, by population).

CLSC Rosemont lies within the RTS de l'Est-de-l'Île-de-Montréal while CLSC La Petite-Patrie is located in RTS du Nord-de-l'Île-de-Montréal. The RTS de l'Est-de-l'Île-de-Montréal is used here as a point of comparison.

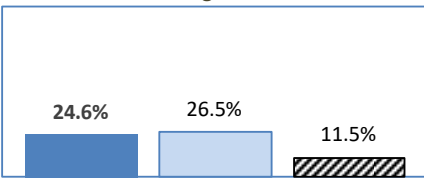
In a Lone-parent Family



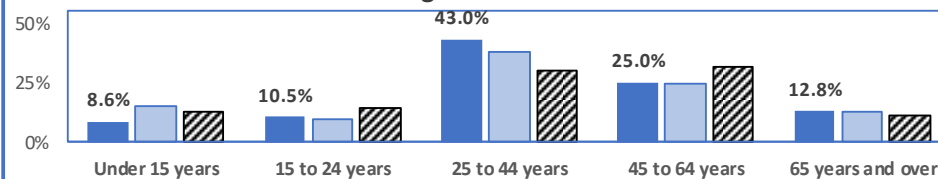
Low Education



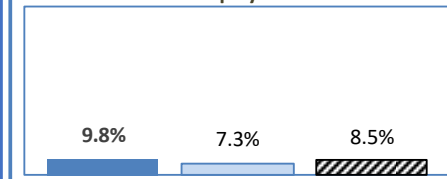
Living Alone



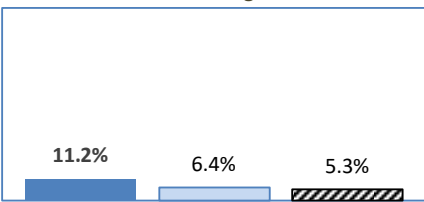
Age Structure



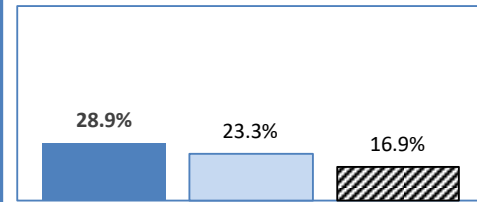
Unemployment



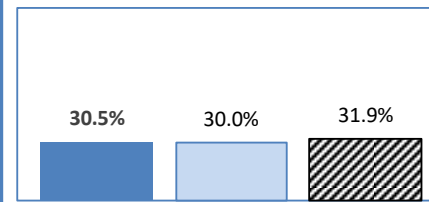
Recent Immigrants



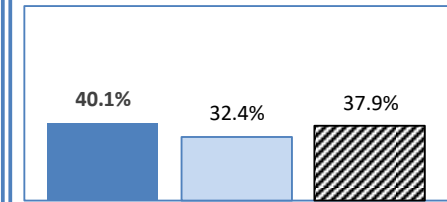
Below LICO



Out of Labour Force



Low Income



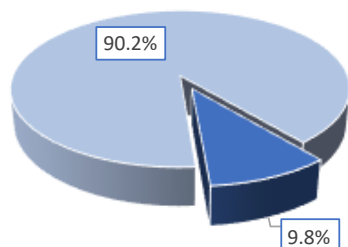
Legend

- Local English-speaking Population
- Local French speakers
- ▨ RTS de l'Est-de-l'Île-de-Montréal's English speakers

Source: JPocock Research Consulting, 2016 Census, Statistics Canada. Population in private households - 25% sample. The linguistic concept is First Official Language Spoken with multiple responses distributed equally.

Rosemont-La Petite-Patrie* - population d'expression anglaise, 2016

Rosemont-La Petite-Patrie*



■ population d'expression anglaise ■ reste

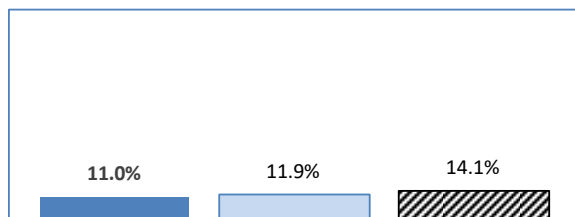
Rosemont-La Petite-Patrie*, selon le groupe linguistique

Caractéristiques	population d'expression anglaise		population d'expression française	
	Nombre	Pourcentage	Nombre	Pourcentage
Population totale	12 870	9.8%	117 075	89.1%
enfants (0-14)	1 110	8.6%	17 310	14.8%
âînés (65+)	1 650	12.8%	15 045	12.9%
monoparentales	1 410	11.0%	13 985	11.9%
vivant seul	3 165	24.6%	30 995	26.5%
migrants inter-prov.	605	4.8%	520	0.5%
migrants externes	1 400	11.2%	7 075	6.4%
seuil de faible revenu	3 720	28.9%	27 260	23.3%
Population 15+	11 755	91.3%	99 758	85.2%
faible éducation	3 810	32.4%	30 563	30.6%
éducation élevée	4 595	39.1%	36 548	36.6%
population active	8 160	69.4%	69 800	70.0%
chômeurs	800	9.8%	5 063	7.3%
population inactive	3 590	30.5%	29 958	30.0%
revenu moins de \$20k	4 710	40.1%	32 363	32.4%
revenu plus de \$50k	2 600	22.1%	29 220	29.3%

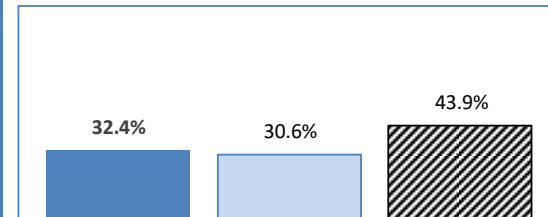
* Les chiffres indiqués sont pour la combinaison du CLSC Rosemont et CLSC La Petite-Patrie. (96,4% comparable à l'arrondissement de Rosemont-La Petite-Patrie, par population).

CLSC Rosemont fait partie de la RTS de l'Est-de-l'Île-de-Montréal tandis que CLSC La Petite-Patrie est situé dans la RTS du Nord-de-l'Île-de-Montréal. La RTS de l'Est-de-l'Île-de-Montréal est utilisée ici comme point de comparaison.

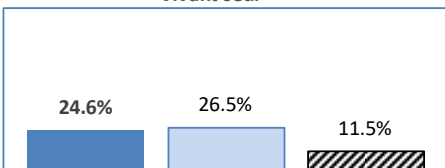
Familles monoparentales



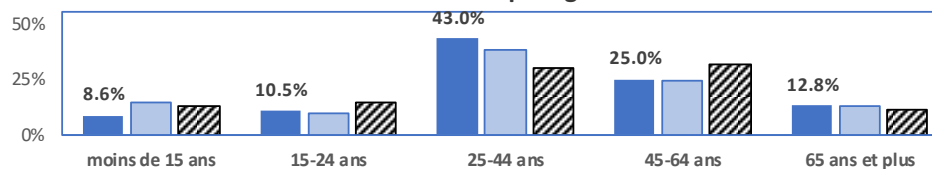
Éducation faible



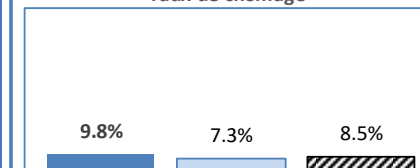
Vivant seul



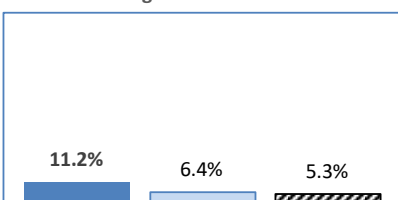
Structure par âge



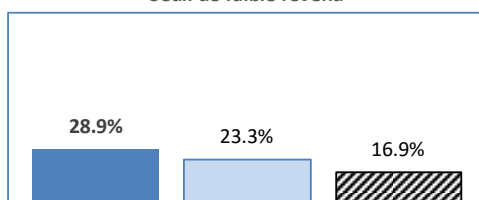
Taux de chômage



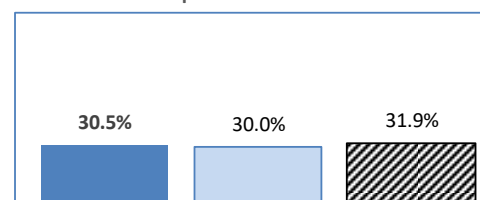
Migrants externes



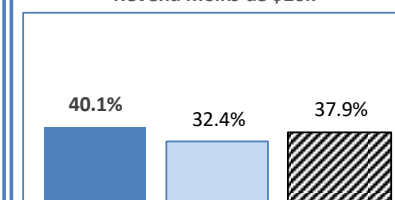
Seuil de faible revenu



Population inactive



Revenu moins de \$20k



Legende

- d'expression anglaise
- d'expression française
- ▨ d'expression anglaise (RTS de l'Est-de-l'Île-de-Montréal)

Source: JPocock Research Consulting, recensement de 2016, Statistique Canada. Population dans les ménages privés - échantillon de 25%. Le concept linguistique est la première langue officielle parlée avec des réponses multiples réparties également.