

Life Long Healthy Development Framework

Presented by:

Kimberly Buffitt, Coasters Association Inc

March 21st, 2014



Networking and Partnership Initiative (NPI)

The Community Health and Social Services Network (CHSSN) received funding from Health Canada fund for Official Language Minority Community (OLMC) (Road Map). The Community Health and Social Services Network (CHSSN) has spent the last 9 years working with English-speaking minority communities across the province of Quebec to address health inequalities and set-up health networks

- The key innovative aspects of this approach are:
 - to empower vulnerable communities to identify their needs based on a population health approach,
 - express those needs to the appropriate public sector partner
 - develop networks with those public partners and other service providers to respond to the identified needs

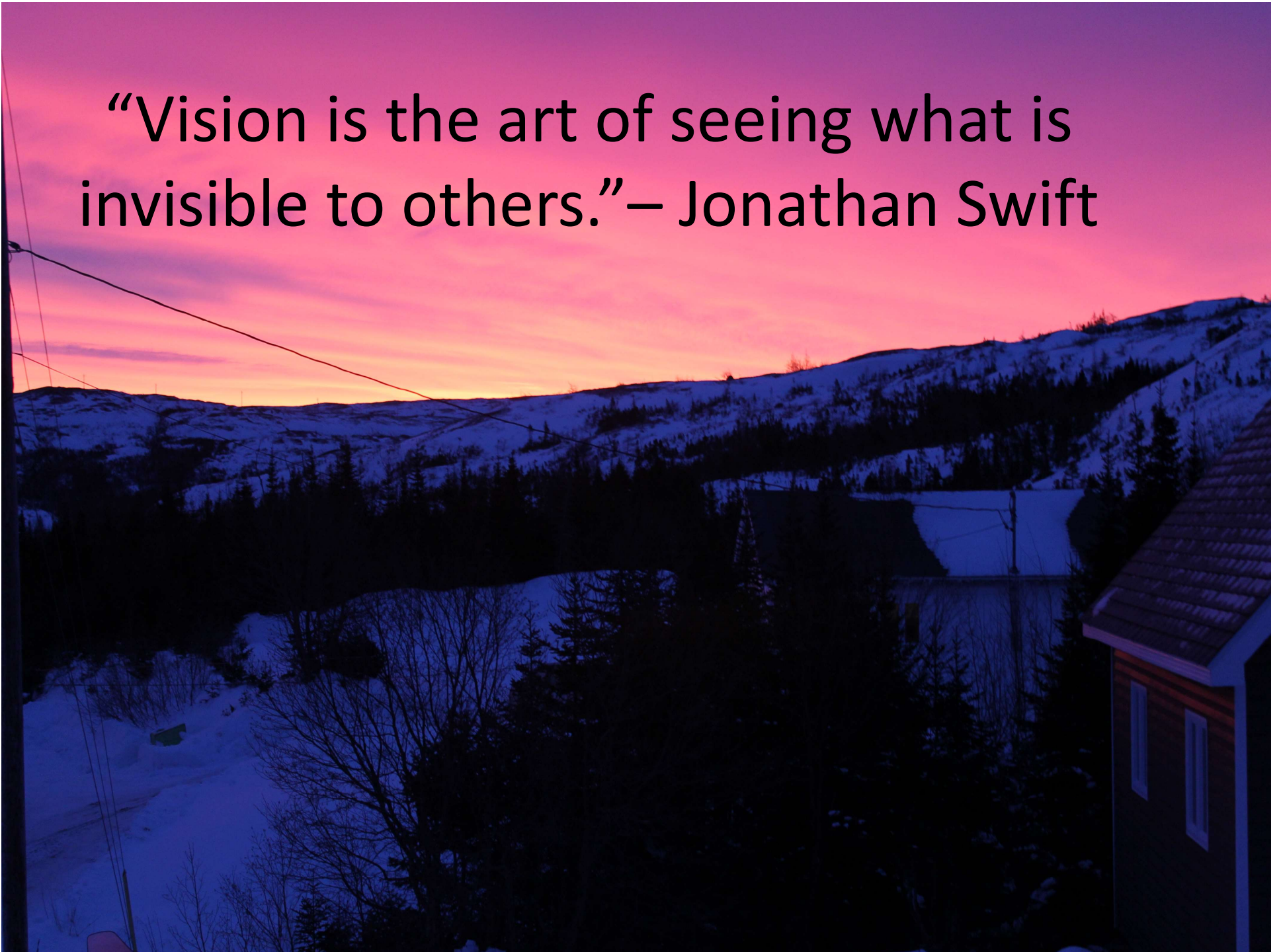
NPI Guiding Principals

- Improve access to services in English
- Establish links between the ESC and the public sector
- Revitalize communities' capacity to participate
- Develop/share a knowledge base of the ESC

Coasters Association and the Lower North Shore Coalition for Health (LNSCH)

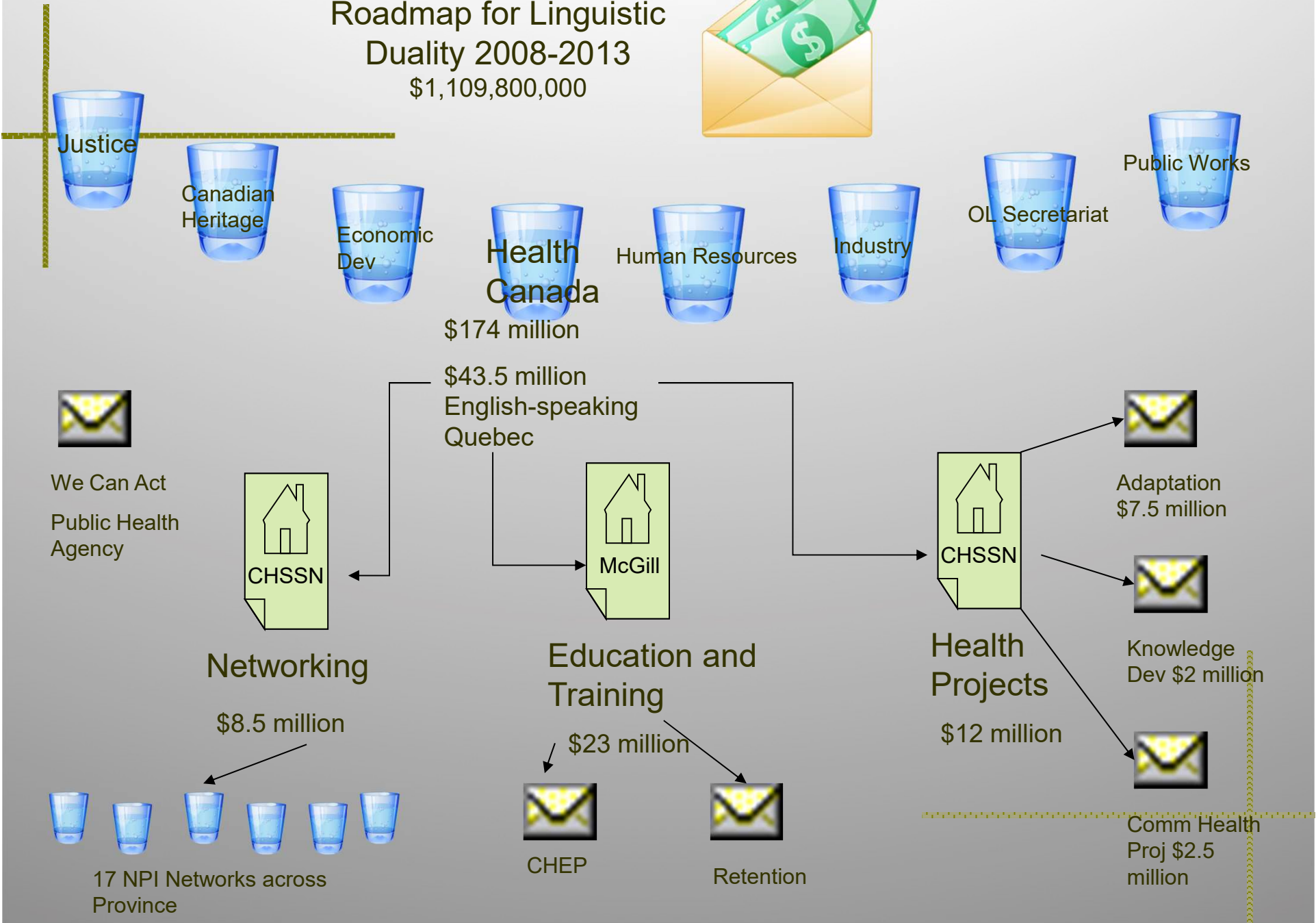
- The Lower North Shore Coalition for Health is a network table of the CA made up of members from the:
 - Coasters Association (Anthony Dumas)
 - Centre de Sante et des Services Sociaux de la Basse Cote Nord (Wanda Beaudoin)
 - Commission Scolaire du Littoral (Vincent Joncas/Eileen Schofield)
 - MRC (Lionel Roberts/To be named)
 - Quebec Labrador Foundation (Serena Etheridge)
 - Community Employability Development Economic Committee (Vicki Driscoll/Melissa Roberts)
 - Surete du Quebec (Rene Couture)
 - Local Development Center (Jarvin Joncas)
 - Lower North Shore Table for Seniors (Ghislaine Nadeau)
 - CA Staff- Cornella Maurice, Executive Director and Kimberly Buffitt, Director of programs, Shelley Fequet Assistant to the Director of Programs

“Vision is the art of seeing what is invisible to others.” – Jonathan Swift



Roadmap for Linguistic Duality 2008-2013

\$1,109,800,000



Roadmap for Canada's Official Languages 2013-2018

Feuille de route pour les langues officielles du Canada 2013-2018



\$1,124,110,000



Justice



Canadian Heritage



Economic Dev



Health Canada



National Research Council



Industry



Citizenship

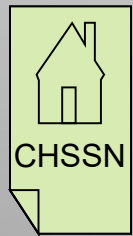


Human Resources

\$\$\$ million pour les Francophones hors Quebec

\$173.5 million

\$\$\$ million English-speaking Quebec



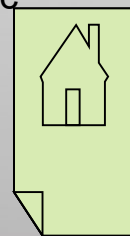
CHSSN

Networking

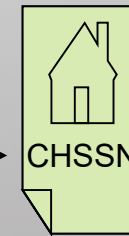
\$8 million



20 NPI Networks across Province



Training & Retention
\$XX million



CHSSN

Community Health Projects
\$ xx.x million



Adaptation
\$x.x million



Knowledge Dev
\$x.x million



Health Promotion Project
\$x.x million

Issues and concerns of population 2004-2008

In the first phase of the Health and Social Services and Networking and Partnership Initiative (HSSNPI) project a survey was accomplished in all the communities on the LNS, five (5) priorities were established based on the results:

1. Youth and Children
2. Drug and Alcohol Abuse
3. Women's Issues
4. Wait times and Post Care
5. Transportation and Lodging

Strategies were developed to answer to these priorities with the Coasters Association Board of Directors and the established partnership table, The Lower North Shore Coalition for Health, with support from the Community Health and Social Services Network (CHSSN)

Issues and concerns of population 2009-2013

In the second phase of the HSSNPI project focus group sessions were held in every municipality to prioritize actions for the next four years:

1. Public health
2. Physical health
3. Seniors and those with loss of autonomy
4. Youth and families
5. Mental health
6. Physical disability, Intellectual disability and development disorders
7. Alcohol and drug addiction

Issues and Concern of the population 2014-2018

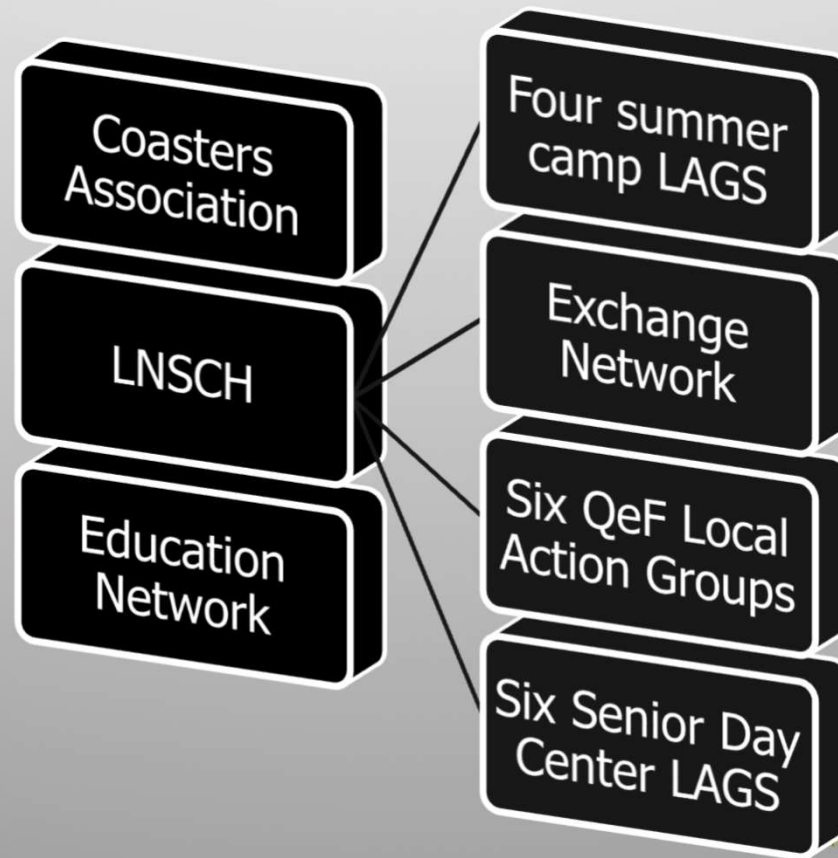
- In the third phase
 - **Network Unit Development**
 - **Representation**
 - **Knowledge Development**
 - **Adapting Services and addressing health determinants**
(Seniors and those with loss of autonomy, Youth and families, Mental health, Physical disability, Intellectual disability and development disorders, and Dependencies)
 - **Community Leadership**

“To accomplish great things, we
must dream as well as act.”

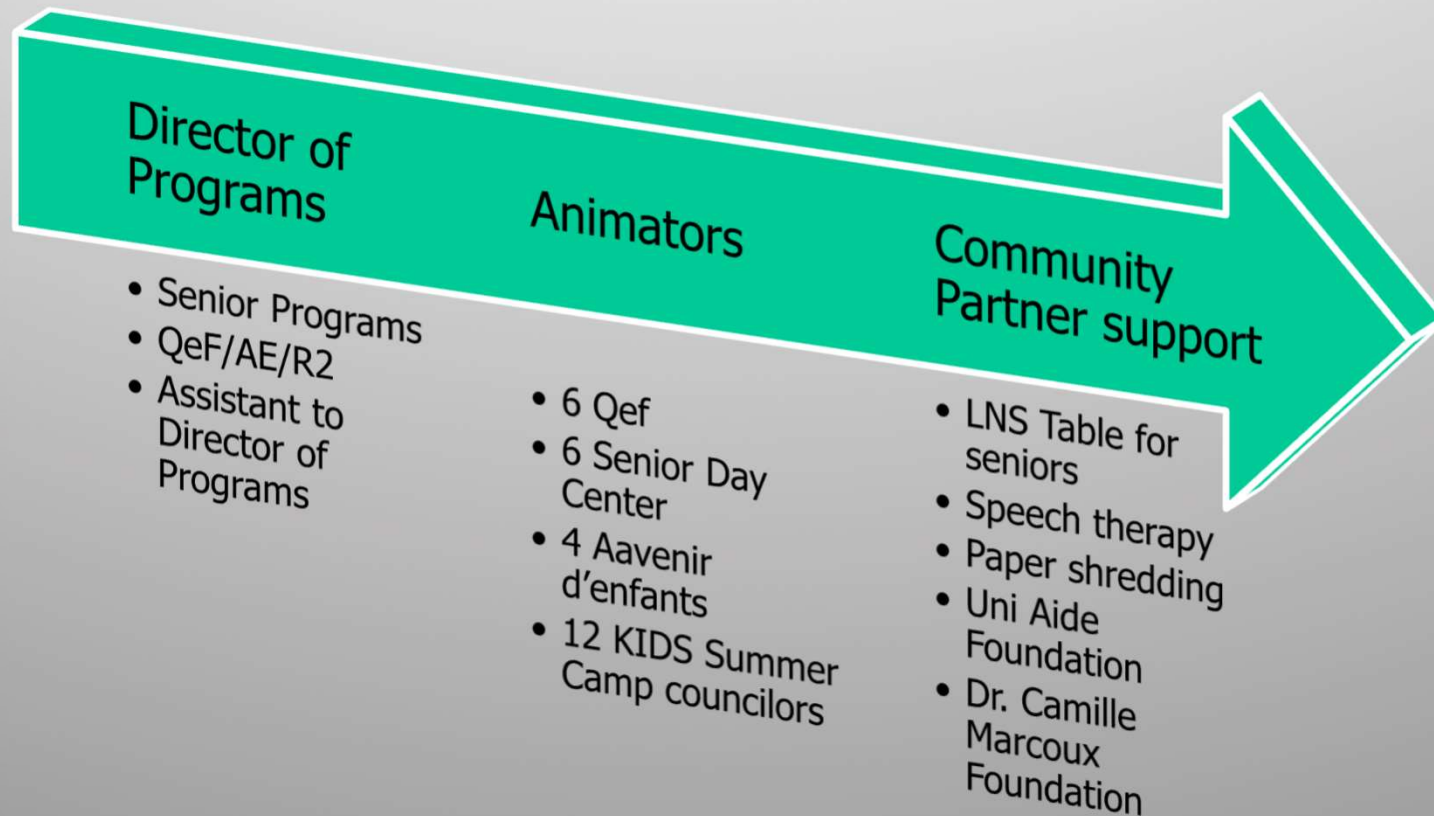
– Anatole France



Evolution of the network



Evolution of the staff



Most days we feel like this



Next Steps



Vision 20-20

- We cannot just plan and consult we have to implement

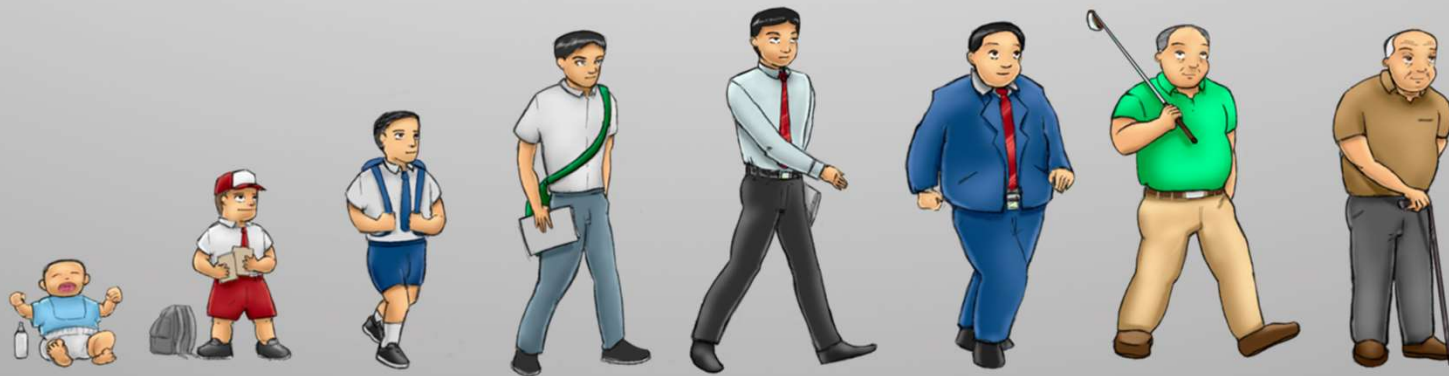
“Obstacles don't have to stop you. If you run into a wall, don't turn around and give up. Figure out how to climb it, go through it, or work around it.”

~ Michael Jordan

obstacles

www.trackertraining.com

Support through the life stages



What effects those stages

The evidence indicates that the key factors which influence population health are:

income and social status;
social support networks;
education;
employment/ working conditions;

social environments;
physical environments;
personal health practices and coping skills;
healthy child development;
biology and genetic endowment;
health services;
gender; and culture.

What do we have to do?

A decorative crosshair consisting of a vertical and a horizontal line made of small yellow dashes, located in the upper left corner of the slide.

- Economic Development
 - Community Development-Leadership
 - Social Development-Poverty/Social Inclusion
 - Education/Youth
 - Health and Social Services
 - Communications
 - Arts, Culture & Heritage
- 
- A decorative crosshair consisting of a vertical and a horizontal line made of small yellow dashes, located in the bottom right corner of the slide.

For More Information

Contact:

Kimberly Buffitt

Director of Programs

Coasters Association Inc

P.O. Box 10

St. Paul's River, Quebec

G0G 2P0

E-Mail: hssnpi@globetrotter.net

Tel: (418) 379 2006 ext #226

Fax: (418) 379 2621

Questions and comments

The Lower North Shore of Quebec

