

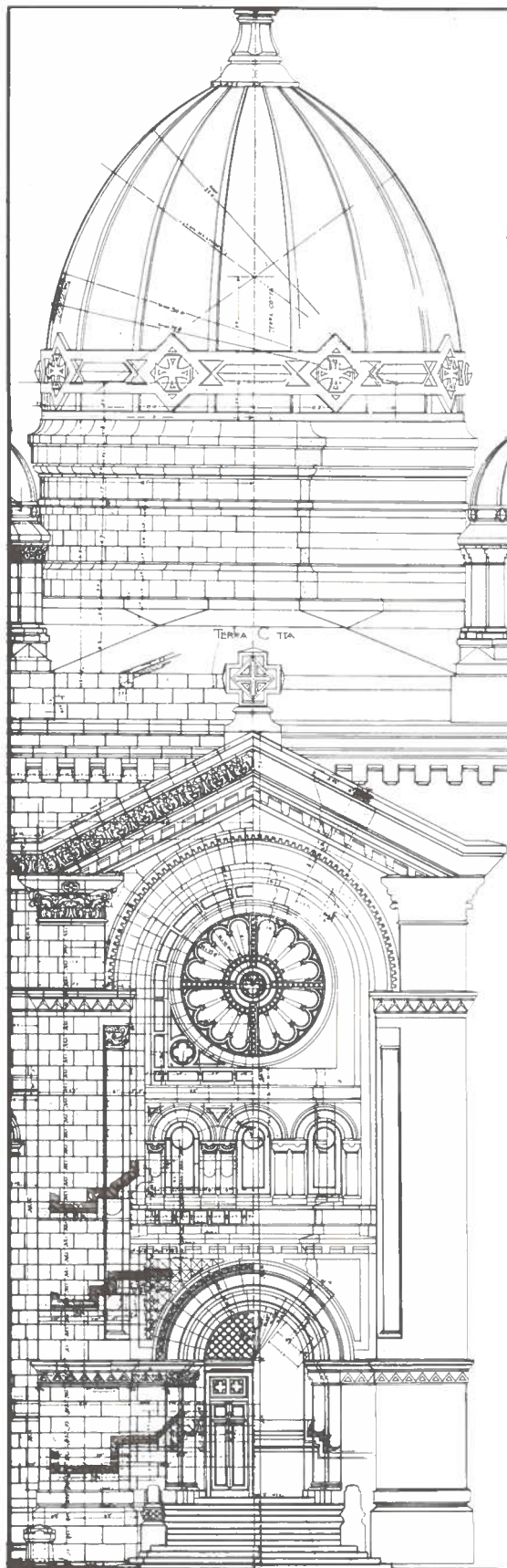


mmes...  
*that's*



QUEBEC FEDERATION OF  
HOME AND SCHOOL ASSOCIATIONS





Dawson College joins students and educators  
in celebrating this year's theme:

## "Partners in Action"

As Quebec's largest English CEGEP,  
we understand that the concept of  
"Partnership" is central to educa-  
tional excellence: partnership  
between students, parents, educators  
and industry.

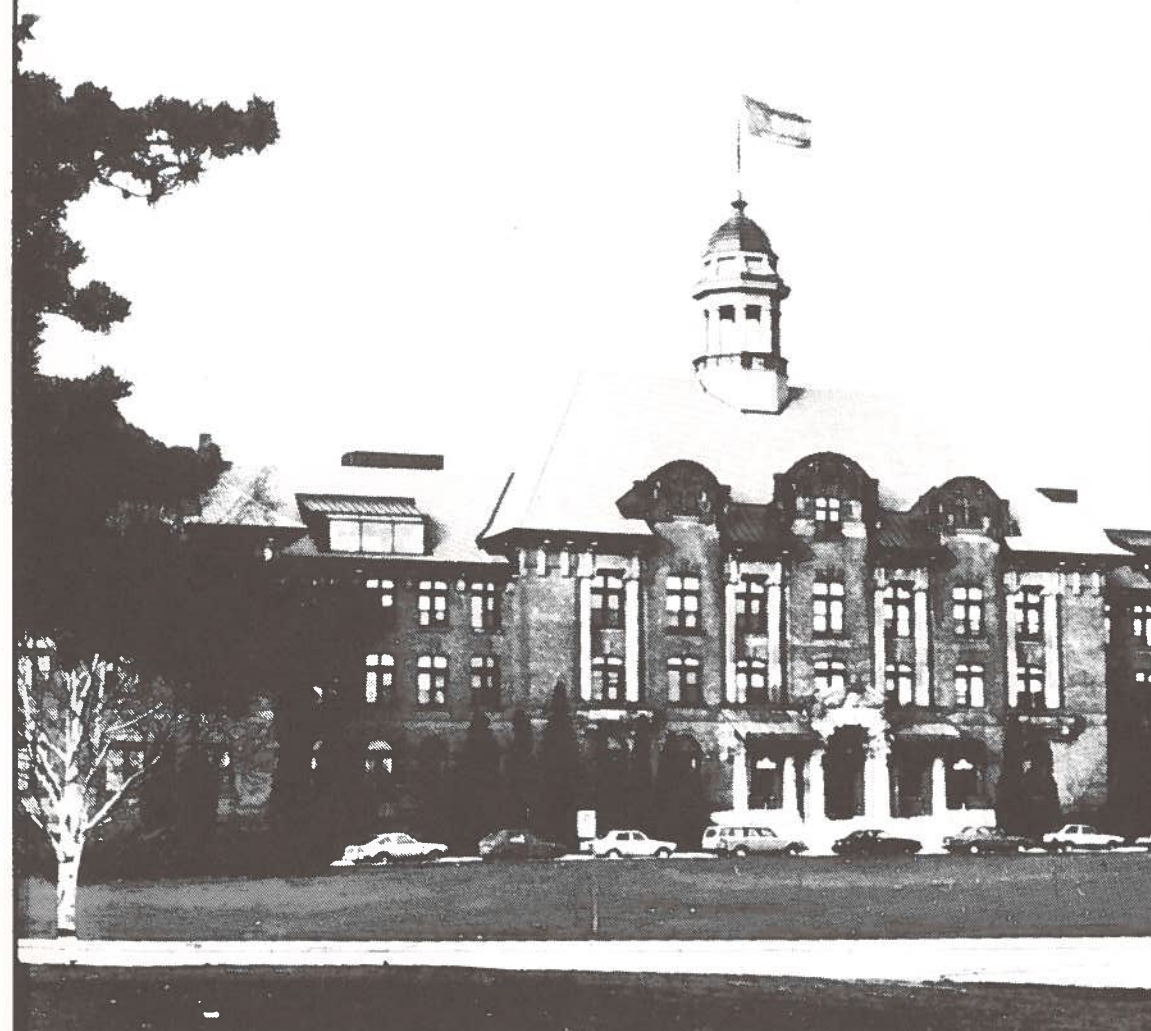
It's a principle that guides our college  
and every one of our 35 pre-university  
and career programs.

**DAWSON COLLEGE**  
**WE CAN GET YOU STARTED.**



# JOHN ABBOTT COLLEGE

*A time to learn  
A place to grow*



P.O. BOX 2000, STE. ANNE DE BELLEVUE, QUEBEC H9X 3L9



**GORDON PATERSON AWARD**  
for outstanding service to the education of children

**THOMAS BEAN**

Tom Bean was born and raised in the Eastern Townships where both his parents were teachers. After graduating from Macdonald College, Tom taught for a year in Rosemere and then returned to the Townships to teach at Princess Elizabeth Elementary School in Magog.

He pursued his studies, graduating with a B.A. from Bishops University, Lennoxville, and in 1969 was appointed Principal of Princess Elizabeth School. Because he was interested in understanding and meeting the needs of children, Tom went on to earn a Special Education diploma and later a Reading diploma.

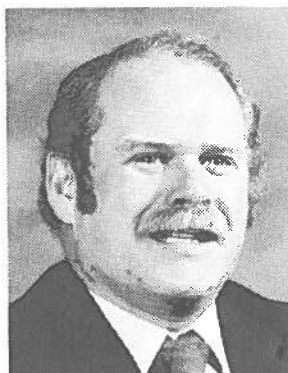
In 1984 he became principal of two schools — Ayer's Cliff Elementary and Sunnyside Elementary (in Rock Island).

Tom is the father of two children, Lisa and Troy, and is an active parent and community-minded citizen. Professionally, he is an active member of the Quebec Association of School Administrators.

Tom believes strongly that 'parents make a difference' in the life of a school. He remembers the support of parents as a significant factor in helping him get established. He has supported parents in their decisions regarding the needs of their schools and has been approachable, resourceful and communicative.

Tom has actively encouraged parents to be involved in Quebec Federation of Home & School Associations as a means of enriching school life and he has ably represented the administrator's point of view at our Leadership Conference and Annual General Meeting.

The Gordon Paterson Award is intended to honour an outstanding educator who has encouraged parent participation in the education of their children and involvement with their school. Tom's dedication to education through his recognition of the importance of the home, the school and the community working together, make him a most deserving recipient of this award.



**LESLIE N. BUZZELL AWARD**  
for outstanding service to Quebec Federation

**SANDRA KEIGHTLEY and ROSE KANDALGAONKAR**



Two wonderful Home & School individuals are the co-recipients of the 1986 Buzzell Award.

They were often involved in mutual undertakings and came to be thought of as a 'team' even though they also undertook totally separate pursuits for QFHSA.

Both Rose and Sandra have served on local Home & School Associations, followed by committee chairmanships on the Quebec Federation of Home & School Associations' Board of Directors.



They have served on the QFHSA Executive and both served terms as Executive Vice-President. They publicized the work of our Federation in a most positive fashion.

Sandra and Rose co-chaired a successful fund-raising raffle and gala dance that enabled QFHSA to remain financially independent during a difficult period in our history.

Rose and Sandra exemplify the true qualities of volunteerism and service that are recognized by this award.

QFHSA salutes them!



**President's  
Message**

**W**ELCOME TO THE 42nd Annual Conference of the Quebec Federation of Home & School Associations.

On behalf of the Board of Directors, I want to convey our best wishes to all delegates, members, observers and guests. We hope that as "Partners in Action" we will use this important reunion to reaffirm our mutual goals. One of our most important objectives is the stimulation of the *active* participation of parents, and society as a whole, in educational and welfare issues affecting our children and youth.

Those who attend *are* the committed people, the "partners in action". Our mission is to ignite others who have either limited or little active interest and who do not realize what they are missing.

This conference brings together the home, the school and the community; it is the forum for an exchange of ideas that may well have a lasting impact upon many of us who attend.

Thank you to the conference committees for making the 1986 Quebec Federation of Home & School Associations' AGM a memorable event.

Sincerely, Sylvia O. Adams

# McGill

After completing the appropriate CEGEP program, students may be admitted to 16 of McGill's 21 Faculties and Schools, including Agriculture, Architecture, Arts, Dentistry, Dietetics and Human Nutrition, Education, Engineering, Law, Management, Medicine, Music, Nursing, Physical and Occupational Therapy, Religious Studies, Science and Social Work.

If you would like our help in learning more about McGill programs, campus visits and student life, call or write –  
McGill University,  
Information & Liaison Office, Burnside Hall,  
805 Sherbrooke Street West,  
Montreal, Quebec H3A 2K6,  
tel.: 392-5954.



McGill University  
Montreal

***Reliable Life*** INSURANCE  
COMPANY

## **SPECIALISTS IN STUDENT ACCIDENT INSURANCE**

For many years Reliable Life Insurance Company has been a leader in the Student Accident Insurance field and has a fully qualified and experienced staff of claims, underwriting and administrative personnel to serve your needs.

We are pleased that for the present and coming school years the Quebec Federation of Home and School Associations has recommended our Company to underwrite the Student Accident Insurance Plan in the province of Quebec.

FOR FURTHER INFORMATION WRITE TO:

RELIABLE LIFE INSURANCE COMPANY  
BOX 557 - HAMILTON, ONTARIO  
PHONE: (416) 523-5587

Attention of:  
S. MacDonald,  
Manager, Special Risks Dept.



# QUEBEC ASSOCIATION OF INDEPENDENT SCHOOLS

The member schools of this Association are:

## Bialik High School

6500 Kildare Road  
Côte St. Luc, Quebec  
H4W 3B8 Tel: (514) 481-2736

## Bishop's College School

Lennoxville, Quebec  
J1M 1Z8 Tel: (819) 566-0227

## Centennial Academy

3641 Prud'homme Avenue  
Montreal, Quebec  
H4A 3H6 Tel: (514) 486-5533

## École bilingue Notre Dame de Sion

1775 Decarie blvd.  
St-Laurent, Québec  
H4L 3N5 Tél: (514) 747-3895

## Hebrew Academy

8205 Mackle Road  
Montreal, Quebec  
H4W 1B1 Tel: (514) 489-5321

## Herzliah High School

4840 St. Kevin Avenue  
Montreal, Quebec  
H3W 1P2 Tel: (514) 739-2291

## Herzliah High School

805 Dorais Street  
St. Laurent, Quebec  
H4M 2A2 Tel: (514) 336-7490

## Lower Canada College

4090 Royal Avenue  
Montreal, Quebec  
H4A 2M5 Tel: (514) 482-9916

## Loyola High School

7141 Sherbrooke St. West  
Montreal, Quebec  
H4B 1R6 Tel: (514) 486-1101

## Miss Edgar's & Miss Cramp's School

525 Mount Pleasant Avenue  
Montreal, Quebec  
H3Y 3H6 Tel: (514) 935-6357

## Queen of Angels Academy

100 Bouchard Blvd.  
Dorval, Quebec  
H9B 1A7 Tel: (514) 636-0900 or 636-4656

## St. George's School of Montreal

3100 The Boulevard  
Montreal, Quebec  
H3Y 1R9 Tel: (514) 937-9289

## Sedbergh School

Montebello, Quebec  
J0V 1L0 Tel: (819) 423-5523

## Selwyn House School

95 Côte St. Antoine Road  
Montreal, Quebec  
H3Y 2H8 Tel: (514) 931-9481

## Stanstead College

Stanstead, Quebec  
J0B 3E0 Tel: (819) 876-2702

## The Priory School

3120 The Boulevard  
Montreal, Quebec  
H3Y 1R9 Tel: (514) 935-5966

## The Sacred Heart School of Montreal

3635 Atwater Avenue  
Montreal, Quebec  
H3H 1Y4 Tel: (514) 937-2845

## The Study

3233 The Boulevard  
Montreal, Quebec  
H3Y 1S4 Tel: (514) 935-9352

## Trafalgar School for Girls

3495 Simpson Street  
Montreal, Quebec  
H3G 2J7 Tel: (514) 935-2644

## Villa Maria

4245 Decarie Blvd.  
Montreal, Quebec  
H4A 3K4 Tel: (514) 484-4950

## Weston School Inc.

124 Ballantyne Avenue South  
Montreal West, Quebec  
H4X 2B3 Tel: (514) 488-9191

## Q.F.H.S.A. EXECUTIVE COMMITTEE 1985-1986

### President

SYLVIA O. ADAMS

### Executive Vice-President

HELEN KOEPPE

### Vice-Presidents

DOREEN CANAVAN  
ANN CUMYN  
STEPHEN DRAKE  
ANNE KISS

JOAN LOCKE  
SYLVIA RANKIN  
SUSAN STAMM

### Treasurer

CASPAR ESSELAAR

Recording Secretary  
JON PERCY

### Honorary President

JOHN PARKER

Past-President  
MARION DAIGLE

### Q.F.H.S.A. COMMITTEE CHAIRMEN

Area Representation . . . . . Anne Kiss  
Constitution . . . . . Gisela Amarica  
Education . . . . . Ann Cumyn  
Curriculum . . . . . Owen Buckingham  
French, second language . . . . . Gisela Amarica  
Finance . . . . . Caspar Esselaar  
Historian . . . . . Alex Morris  
Insurance (Student Accident) . . . . . Stephen Drake  
I.Y.Y.  
(International Youth Year [1985]) . . . . . Joan Locke  
Lakeshore Regional Council . . . . . Jon Percy  
Legal Counsel . . . . . William I. Miller, QC  
Major School Change . . . . . Valrie Carpenter  
Membership . . . . . Carol Ohlin  
M'ship Development & L'ship  
Training . . . . . Marilyn Percy  
M.R.I. (Moral & Religious  
Instruction) . . . . . Betty Lou Manker

Office Services . . . . . Susan Stamm  
Provincial Liaison . . . . . Sylvia Adams  
Publicity . . . . . Marion Daigle  
QFHSA Task Force on School  
Reorganization . . . . . Marion Daigle  
Quebec Home & School  
NEWS . . . . . Dorothy Chant-Hannah  
(Editor)  
Resolutions, Statements of  
Policy . . . . . Barbara Milne-Smith  
Rights . . . . . Calvin Potter  
Social Affairs/Support Services . . . . . Patricia Lewis  
Child Abuse & Neglect . . . . . Maureen Haynes  
Smoking & Health . . . . . Judy Bock (resource)  
Transportation/Safety . . . . . Donald Smith  
Teacher Contract Negotiations . . . . . Doreen Canavan  
Technology & Education . . . . . Jon Percy

### LIAISON

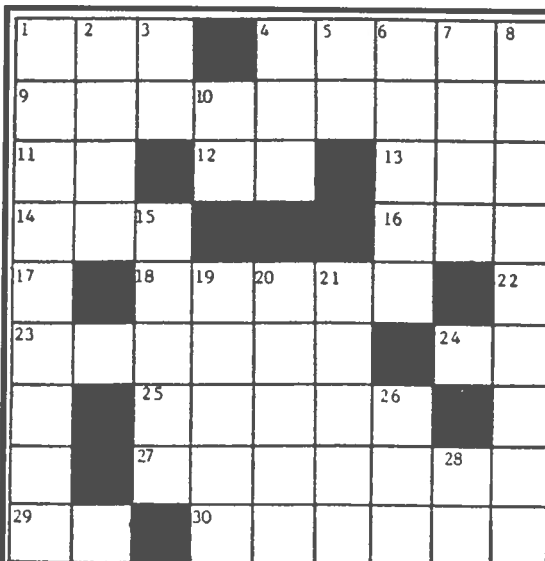
Alliance Quebec . . . . . Marion Daigle  
FCPPQ (Fédération des comités de parents  
de la province de Québec) . . . . . Gary Stronach  
MEQ/English Pedagogical Services  
Primary Language Arts . . . . . Esther Wearing  
Secondary Language Arts . . . . . Bonnie Hasan

Lakeshore School Board . . . . . Jon Percy  
PAPT/PACT Curriculum Council . . . . . Ann Cumyn  
P.S.B.G.M. . . . . Valrie Carpenter  
Quebec Association of Protestant  
School Boards . . . . . Sylvia Adams  
Helen Koeppe

### 1986 CONFERENCE COMMITTEE CHAIRMEN

Awards . . . . . Sylvia Adams  
Marion Daigle  
Book of Reports . . . . . Betty Brunet  
Constitution . . . . . Gisela Amarica  
Displays . . . . . Geraldine Gatien  
Helen Koeppe  
Finances . . . . . Caspar Esselaar  
General Arrangements . . . . . Carol Ohlin  
Helen Koeppe  
Hospitality . . . . . Doreen Canavan  
Joan Locke  
Sue Stamm  
Kits . . . . . Judy Cloutte  
Cindy Snelgrove  
Gordon McGibbon  
Nominations . . . . . Marion Daigle  
Photography . . . . . Gordon Perry

Preview Book . . . . . Carol Ohlin  
Preview Flyer Artwork . . . . . Sharon Robinson  
Program Book - layout . . . . . Gordon Perry  
Barbara Milne-Smith  
- ads . . . . . Doreen Canavan  
Flo Johnson  
Program Coordinator . . . . . Angelika Redahl  
Plenary Co-chairmen . . . . . Al Locke  
Jon Percy  
Program Committee . . . . . Ruth Crabb  
Marion Daigle  
Sandra Posner  
Publicity . . . . . Marion Daigle  
Publicity Committee . . . . . Carol Ohlin  
Registration . . . . . Ann Trzcienski  
Valrie Carpenter  
Doreen Canavan



- ACROSS**
1. FI's partner
  4. Kingdom
  9. Harmonious site
  11. Interjection
  12. BC's partner
  13. Free as —
  14. Popular spot across border
  16. Novy —
  17. — Canada
  18. Certain health plans
  22. King's partner
  23. Partner with SGWU to create 9 across
  24. Ma's partner
  25. U.S. oil giant
  27. Sweet —
  29. —yo (toy)
  30. Adjusts again

- DOWN**
1. Non-holiday
  2. Fuel
  3. Out's partner
  4. — & Reel
  5. Philip's partner or chem. symbol
  6. Namesakes of an original partner
  7. Rom. num. 53
  8. Love's reward
  10. Partner's firm
  15. Russian noble
  19. Expo's dream
  20. Partner with you (phrase)
  21. Steps
  26. "— of these days, Alice!"
  28. Car model abbreviation

A salute to education's best possible partner, the Quebec Federation of Home & School Associations, which for 42 years has united parents, schools and youngsters in taking positive and effective action. We pledge our continuing support.



Commission scolaire  
Lakeshore  
Lakeshore  
School Board



Best  
wishes  
from

## NORTHVIEW

Home & School  
and School Committee

*Compliments of*

## WINDERMERE

Home and School  
and  
School Committee

## HUDSON

Home and School  
Association

Working with

- Hudson High School
- Hudson Elementary
- Mount Pleasant School

*Compliments of*

## SUNNYDALE PARK

Home and School  
Association

Best wishes

## Greater Quebec School Board

School boards provide **quality** education

*Compliments of*

## Meadowbrook

Home and School  
Association  
Lachine

*Compliments of*

## LACHINE HIGH

Home and School  
and  
School Committee

*Best wishes*

## EASTERN QUEBEC REGIONAL SCHOOL BOARD

School boards provide **quality** education

Compliments of  
**HERBERT PURCELL**  
 Home and School  
 Association  
 School Committee

**VENTES KEME INC. SALES**  
 BADGES - CRESTS - RIBBONS  
**MICHAEL REID**  
 13161 Aragon  
 Pierrefonds  
 Que. H9A 1C8  
 Tel.: (514)  
 620-3627

 **GROUP PIANO  
 LESSONS**  
*given in*  
**ELEMENTARY SCHOOLS**  
 Teachers are specially trained by the  
 CANADIAN BUREAU FOR THE  
 ADVANCEMENT OF MUSIC  
*Fees are reasonable*  
**Information: 484-3174**

*Best wishes  
 from*  
**THE STUDENTS' COUNCIL OF**  
**Macdonald  
 High School**

**The Protestant  
 School Board  
 of  
 Greater  
 Montreal**

## **ADULT SERVICES**

Courses are offered  
 throughout the year  
 in:

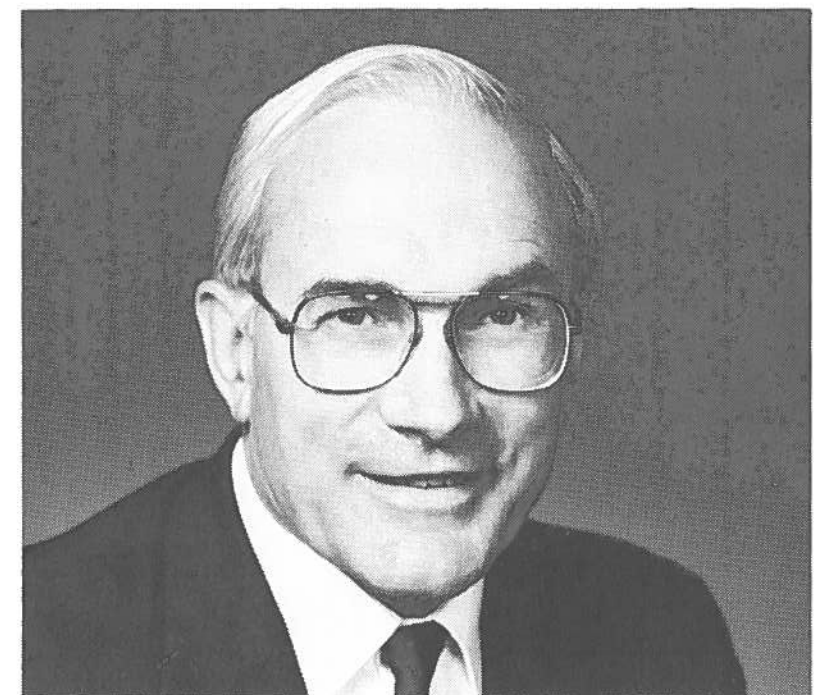
- second language
- hobby/interest
- word processing
- academic
- commercial
- computer

For further  
 information  
 call

**849-3677**

# **KEYNOTE SPEAKER**

**HON. ROBERT LAYTON**



The Honorable Robert Layton, P.C., M.P., Minister of State (Mines), was born and educated in Montreal.

He will highlight the conference theme "Partners in Action" and the importance of volunteers in the life of their community. Their contribution to the well-being of a nation is immeasurable.

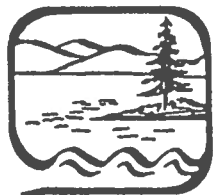
Robert Layton has a rich background in community service himself. He has served on the boards of The Montreal Association for the Blind (founded by his grandfather), Quebec Society for Disabled Children, John Abbott College, and more.

As well as his ministerial responsibilities, Mr. Layton is very interested in the concerns of English-speaking Quebecers.

New Carlisle Home and School	
Best wishes from <b>Wilfred and Sheila Hocquard</b>	Compliments of <b>L. R. HAYES</b>
Best wishes from <b>Patsy and Mac MacDonald</b>	
Best wishes from <b>Jewell and Jean-Yves Roy</b>	<i>The transportation of your children in comfort and safety is our concern</i>  <b>B.N. TRANSPORT LTD. Paspébiac, Quebec</b>
Best wishes from <b>Diane Sawyer</b>	
<p><b>GREETINGS and BEST WISHES</b></p> <p><b>SCHOOL BOARD of BONAVENTURE</b></p>	

Compliments of <b>Protestant Regional School Board of Chateauguay Valley</b> and local boards: Ormstown School Board and Lake St. Louis Chateauguay School Board	
Compliments of <b>ORMSTOWN SCHOOL BOARD</b> <i>Ormstown, Quebec</i>	Compliments of <b>MARY GARDNER</b> Home and School Association and School Committee Chateauguay, Quebec
Compliments of <div style="background-color: #333; color: white; padding: 20px; text-align: center;">           Champlain-            The small college            for great ambitions         </div> <p style="text-align: center;">Champlain Regional College</p> <p style="text-align: center;">St. Lambert-Longueuil Campus            900 Riverside Drive            St. Lambert, Quebec</p>	





**Frontier Lodge**

CHRISTIAN YOUTH CAMP

P.O. Box 95, Beaconsfield, Que. H9W 5T6 - Phone: (514) 695-1740

Summer Address: R.R. 2, St-Herménégilde, Que. J0B 2W0 - Phone (819) 844-2277

**Eastern Townships School Board**

**Best Wishes**

**257 Queen Street    Lennoxville, Quebec    J1M 2A5**

*Compliments of*  
**Princess Elizabeth  
Elementary**

**Home and School  
School Committee  
Magog**

*Kids ARE really worth it!*

  
**Montessori** Inc.

SCHOOLS

**8 BRANCHES**

Brochure: Head Office,  
1357 Van Horne, Montreal H2V 1K7

Information:  
272-7040 • 272-2826



**Les courtiers d'assurances Nichol Ltée  
Nichol Insurance Brokers Ltd.**

2000 rue Peel, suite 900,  
Montreal

(514) 288-6161

*ALL CLASSES OF BUSINESS AND PERSONAL INSURANCE*

Our compliments and best wishes for  
a successful convention and year

**DISTRICT OF BEDFORD**

*Protestant Regional School Board*

505 South Street, P.O. Box 20  
Cowansville, Quebec J2K 3H2  
(514) 263-1515

LA COMMISSION DES ÉCOLES PROTESTANTES DU GRAND MONTRÉAL  
THE PROTESTANT SCHOOL BOARD OF GREATER MONTREAL

*Best Wishes for a  
Successful Convention*



*The PSBGM – Working with Parents  
in Education, Today... and Tomorrow*



**The**  
**Quebec Association of**  
**Protestant School Boards**  
joins in saluting our  
**children and youth**  
our most precious resource

**Best wishes to**  
**Quebec Federation of**  
**Home and School Associations**  
on the occasion of its  
**42nd Annual Convention**

*Show you*  
**CARE**

Get involved  
in the future  
of our youth

**Philemon Wright**  
**School Committee**

*"Simon" says "Hello!"*

**AYLMER**



**ELEMENTARY**  
*Home & School /*  
*School Committee*

**HULL**

Home and School  
& School Committee

*Working together*  
*for the future of*  
*our children*

**Montreal**  
**Language**  
**School Inc.**



**École de**  
**Langues de**  
**Montréal Inc.**

Founded 1962

**INTENSIVE SUMMER COURSES IN ENGLISH AND FRENCH**

6 levels in groups of 4 to 9 students

4-week levels starting  
26 May, 1 July, 28 July, 2 September.

**Reduced fees for Canadian students**

**875-6440**

**680 ouest, rue Ste-Catherine, Montréal H3B 1C2**

*(Metro McGill)*

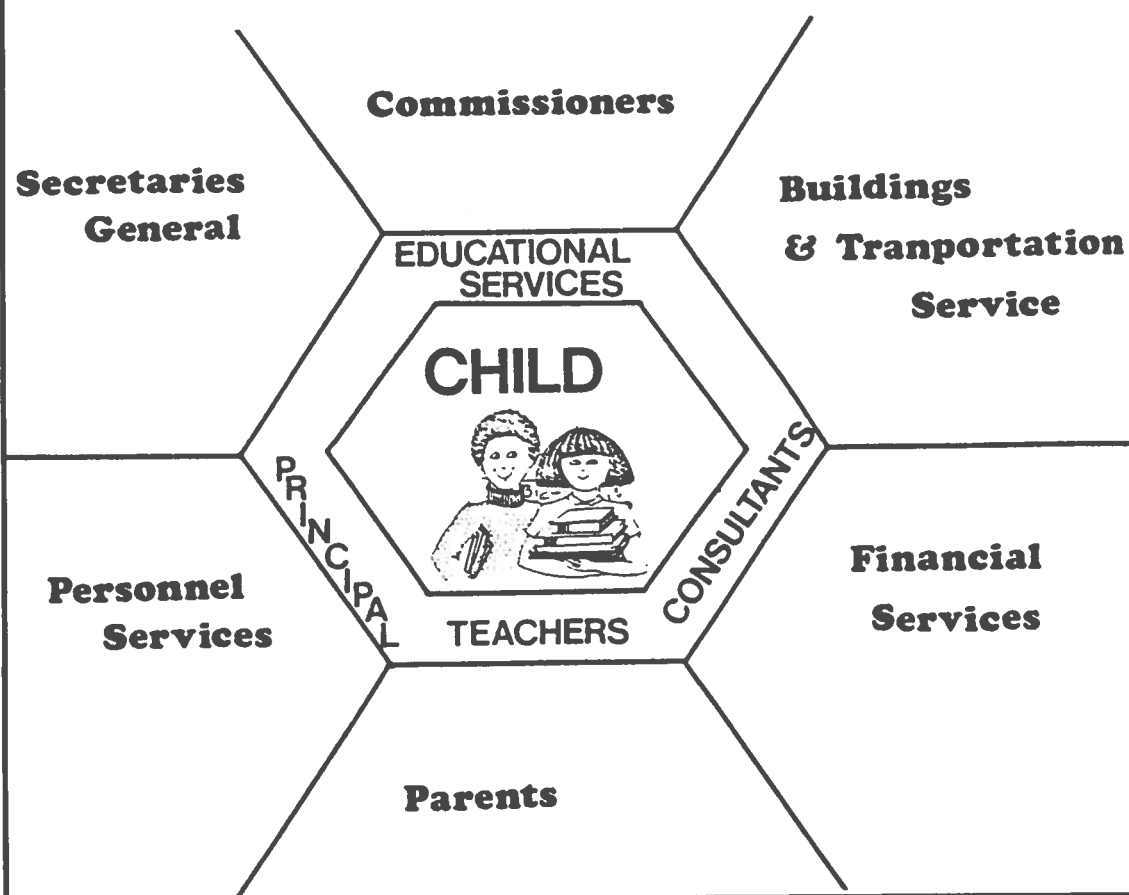
WQ

Protestant Regional

School Board of Western Quebec

## PARTNERS IN ACTION

GREATER HULL  
NORTHWEST  
PONTIAC



## *The Canadian Home and School and Parent-Teacher Federation*

(INCORPORATED)

In bringing greetings from the Canadian Home and School and Parent-Teacher Federation to members and delegates at the QFHSA 1986 Annual Convention, I extend to you the good wishes of our membership and their appreciation of the willing and very effective support of the Quebec Federation of Home and School Associations over the years.

Annual Conventions are very important events. They bring together delegates from across the province to communicate and discuss common concerns with respect to their responsibilities of children. They provide an opportunity to meet formally or informally, to learn from each other and to work with other parents to make this country a better place for all our children.

Home and School is the link between the immediate partners in the education of children — the parent and the teacher. The partnership begins at the level of the local association, expands to the provincial level and forms a chain or network with Home and School Associations nationwide through the Canadian Home and School and Parent-Teacher Federation.

We urge you to continue to support and participate in your Home and School Association. Your presence will be welcomed and will help to strengthen ties between parents across the province and the country.

Best wishes for a successful Convention.

**Joy Bastness**  
PRESIDENT

Canadian Home and School  
and Parent-Teacher Federation



**1986**

**UNITED NATIONS' INTERNATIONAL YEAR OF PEACE**

IF WE KIDS ARE WORTH IT...  
THEN GIVE US WHAT WE  
NEED  
MOST...



Are **you** helping?



TGG Photographic Industries Ltd.

*An ideal*  
**FUND RAISING  
PROMOTION**  
*for your school*  
**WITHOUT  
DOOR-TO-DOOR  
SOLICITATION**

***Double Benefit Opportunity***

TGG Photographic Industries Limited offers a fund raising program that is custom-designed specifically for your school. We guarantee that your promotional efforts will be a success. We provide a beautiful 10x13 full-coloured wall portrait for just \$7.95, which goes right back to your school.

TGG Photographic Industries will provide you with all your advertising material, a professional photographer and portrait consultant. This is a unique fund raiser that increases in value with time.

TGG Photographic Industries is an all-Canadian company backed by professional management, knowledgeable in all facets of photography, and well experienced in dealing with fund raising in schools across Canada.

To learn more on how a TGG fund raising family portrait promotion can fit your needs, please call in Montreal (514) 695-1634 or in Toronto (416) 665-0300.

**TGG PHOTOGRAPHIC INDUSTRIES LTD**

Compliments of  
**ELIZABETH  
BALLANTYNE**  
Home and School

Compliments of  
**Edinburgh**  
**Home and School**

*Anything worth  
having is worth  
the challenge...  
Support  
Home & School*

**THE  
RICHELIEU  
VALLEY  
SCHOOL  
BOARD**

11 Helen Avenue  
Otterburn Park, Quebec  
J3H 1R2



**association for the  
advancement of  
jewish education**



# AELTA

*Teachers  
and parents  
working  
together for  
better  
education.*

Home & School  
at  
**Macdonald  
High School**



A PROUD TRADITION

1919

1986

Best  
wishes  
from



*the newsletter of the Edgewater  
Home and School Community*

Compliments of  
**CHRISTMAS  
PARK**

Home & School Association  
and School Committee



(514) 457-5961

**FINE FOOD AND SPIRITS  
BY THE STE-ANNE'S LOCKS**

**TRY US FOR LUNCH OR DINNER**

164 rue Ste-Anne,  
Ste-Anne-de-Bellevue  
P.Q. H9X 1M6



**Documentation  
Technology  
John Abbott College**



Are you looking for a career? Are  
you interested in exchanging  
ideas & acquiring new skills?

*PREPARE FOR A CAREER AS A TECHNICIAN  
in libraries, archives & information centres!*

P.O. Box/C.P. 2000  
Ste. Anne de Bellevue, Quebec  
H9X 3L9  
Tel. (514) 457-6610



**LAKESHORE REGIONAL COUNCIL**  
*an area council representing Home and School  
Associations under the Lakeshore School Board*



Compliments of  
**ECOLE PRIMAIRE BEACONSFIELD**  
HOME & SCHOOL ASSOCIATION

Best wishes from  
**Allancroft Elementary School**  
Beaconsfield, Quebec

**VALOIS PARK**

Home and School  
and School Committee

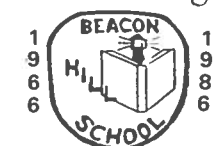
*Working  
together!*

87 BELMONT AVE., POINTE CLAIRE H9R 2N7

Compliments of  
**École Primaire Pointe Claire**  
Home & School Association

Best wishes from  
**SEIGNIORY**  
Home and School  
Association  
and School Committee

20<sup>th</sup> Anniversary



**Beacon  
Hill School**

*20 years of excellence  
in education*

GOOD LUCK

**GREENDALE  
HOME & SCHOOL  
and  
SCHOOL  
COMMITTEE**

Greetings from  
**JOHN RENNIE**  
Home & School Association

Compliments of  
**CEDAR  
PARK**

Home and School  
and  
School Committee

Best wishes from

**THORNDALE HOME AND SCHOOL ASSOCIATION**

# Hopetown, Shigawake, Port Daniel H&S

Compliments of the staff of  
**Shigawake, Port Daniel  
Elementary School**

Best wishes  
**Anne and Gordon  
MacWhirter**

Best wishes from the staff  
**HOPETOWN**  
Elementary School

Compliments of  
**J. A. Campbell Inc.**  
Grand Cascapédia, Quebec

Compliments of  
**LES ENTREPRISES**

Best wishes  
to the  
*Home and School Association*



New Carlisle

Best wishes from  
**New Richmond High**  
*Home and School Association*

*Compliments of*

**Regional  
School  
Board of  
Gaspesia**

C.P. 500  
New Carlisle, P.Q.  
G0C 1Z0



# MEMBERSHIP AWARDS

## On Island

Beacon Hill	88.46%	Membership Chairman — Ruth Ryan
Windermere	86.06%	Membership Chairman — Barbara Shaw
Valois Park	76.88%	Membership Chairman — Mary Jane de Koos
École Primaire Beaconsfield	72.49%	Membership Chairman — Darlene Kerr

*(elementary school figures are based on the number of families in the school)*

## Off Island

Hopetown-Shigawake- Port Daniel	57.14%	Membership Chairman — Bertha Hayes
Ayer's Cliff	33.33%	President/Membership — Cathy Hortop

## High Schools

Macdonald High School	27.92%	Membership Chairman — Beverly Moore
John Rennie High School	18.63%	Membership Chairman — Donna Day

*(high school figures are based on student population)*

## Special Mention

To Edinburgh Elementary (Margaret Ludwig, Membership Chairman), Lindsay Place High School (Marcia Paci, Membership Chairman), and Wagar High School (Eva Marx, Membership Chairman) for significant increases in their membership over last year.

Congratulations to these schools and their membership committees for the excellent effort this year. Membership Awards will be presented at the AGM.

## Newsletter Awards

Off-island	Aylmer	Editor — Lorraine Vadneau
	Hopetown, Shigawake, Port Daniel	Editors — Kathleen Fisher and Beverley Hayes
On-island	Dunrae Gardens Elementary	Editors — Mary Anne Mongeau and Barbara Hindle
	Lindsay Place High	Editor — Sue Ramer

Book prizes donated by Reader's Digest

# VISIT THE EXHIBITORS

La Bibliothèque Arc-en-ciel	Ministère de l'Éducation,	TGG Photographic Industries Ltd.
Canadian Bureau for the Advancement of Music	Radio-Québec	University Scholarships of Canada
Concordia University	Photo Art	Vantage Sports
Frontier Lodge (youth camp)	Prestige Fund-Raising	<b>Suppliers:</b> Thanks to
KRIM Marketing Inc.	Protestant Education Services	Canadian National Railways and
Les Distributions Lamontagne Inc.	Quebec Heart Foundation	Sun Life of Canada
	Sunsweet Citrus Ltd.	

Place-mats provided by Keith Elementary School (LaSalle),  
Ayer's Cliff and Sunnyside Elementary Schools (Eastern Townships),  
and Mount Pleasant Elementary (Hudson).

Muffins supplied courtesy of Edgewater Elementary School (Pincourt),  
Dunrae Gardens Elementary School (Town of Mount Royal)  
and Windermere Elementary School (Beaconsfield).

# South Shore Protestant Regional School Board

## PARTNERS IN EDUCATION

Parents  
Teachers  
Administrators  
Commissioners

## PROVIDING QUALITY EDUCATION

South Shore Protestant  
Regional School Board



- 810 Salaberry, Laval, Qué. H7S 1H3
- 1-514-384-0430

### ELEMENTARY:

- Individual Photos
- Group Photos
- Communion
- Confirmation
- Kindergarten

### SECONDARY:

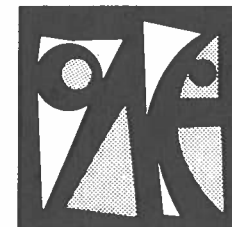
- Identity Cards
- Rolodex Cards
- Adhesive Photos
- Graduation
- Grad Dance

**SCHOOL PICTURES**  
ALSO FAMILY PORTRAITS

Best wishes from the LaSalle area  
**Keith School**  
**Cecil Newman School**  
**LaSalle High School**

Greetings from  
**KEITH**  
Home and School  
and  
School Committee

COMPLIMENTS OF  
**RIVERVIEW SCHOOL**  
and  
**RIVERVIEW DAY CARE**



collège  
de la gaspésie et des îles

*Founded 1968*

### CEGEP GASPÉ

- Uniquely bicultural: 200 English speakers live and share classes with 1,000 Francophones.
- Annually host to 20 non-Quebec anglophones who, after high school in other provinces, enter for a year of French immersion.
- Catalyst to the goals and ambitions of young men and women bound for university or the labor market.
- Boasting residential facilities for 500 students, one half its student body.
- A sports complex with semi-Olympic pool, weight room, two gyms, sauna
- Aquatic sports and challenging downhill ski course.

For full information phone (418) 368-2201, local 420  
or write the Associate Academic Dean,  
C.P. 590, Gaspé, Quebec G0C1R0



**WILLINGDON  
SCHOOL**  
Home and School  
and School Committee  
*WORKING TOGETHER  
FOR OUR CHILDREN*

ÉCOLE **WILLINGDON** SCHOOL  
P.S.B.G.M.

*5870 Terrebonne, between Royal and Draper*

## FRENCH IMMERSION

*Serving N.D.G., Hampstead, Côte St. Luc*

**OPTIONAL FULL-DAY KINDERGARTEN AND  
AFTER-SCHOOL PROGRAM FOR AGES 5 to 10**

## WILLINGDON OFFERS YOU

1. Computer education – 9 Apple computers
2. Extracurricular activities – doll making, chess, science, jazz ballet, tap dancing, woodworking, drama, gymnastics, arts & crafts
3. Music program: junior and senior choirs, recorders, ukuleles
4. Sports program
5. Active Home & School and school committees

		<p><b>#2 "YOU WON'T TELL MY PARENTS WILL YOU?"</b> What teenagers tell their Guidance Counsellor about the problems they face. This workshop will examine what upsets kids about school, friends, parents and community; including a look at teenage depression and suicide. Susan Kwinter, Guidance Counsellor, Riverdale High School. Sandra Posner, Riverdale High School Ruth Crabb, Lachine High Home &amp; School</p>	GAMES ROOM
	<p><b>Speaker</b> <b>Chairman</b> <b>Coordinator</b></p>		
	<p><b>Speaker</b> <b>Chairman</b> <b>Coordinator</b></p>	<p><b>#3 CHILDREN AS CONSUMERS</b> As more parents are working outside the home, more children are taking financial responsibility upon themselves — for haircuts, new shoes, a dinner out or school supplies. Children need help to make sound consumer choices. Betty Stafford-Smith, Consumer Science, School of Dietetics &amp; Human Nutrition, Macdonald College. Kaisanya Agagnier, Lindsay Place High Home &amp; School Sandra Posner, Riverdale High School</p>	FEDELE
	<p><b>Speakers</b> <b>Chairman</b> <b>Coordinator</b></p>	<p><b>#4 THE LANSDOWNE LEARNING CENTRE</b> One objective of parents and educators is to help create a rich learning environment. What is the Lansdowne Learning Centre and how does it make its contribution to this goal? How can parents undertake their part in these major educational issues. . . . motivation, organization, responsibility, homework. Workshop will include discussion period. Carol Melmed and Kay Dila of the Lansdowne Learning Centre. Donna Day, John Rennie High Home &amp; School Angelika Redahl, Macdonald High Home &amp; School</p>	SHEEHEY
11:30-12:00 a.m.	<b>FREE TIME</b>	Workshops may run over if necessary	
12:00-12:30 p.m.	<b>RECEPTION</b>	Last chance to see the displays	
12:30-2:30 p.m.	<b>AWARDS PRESENTATION LUNCHEON</b>	The recipients of the Leslie N. Buzzell and Gordon Paterson Awards will be honoured. Entertainment will be provided by the John Rennie High School "Bell Ringers" of the Lakeshore School Board, under the direction of Mrs. Peggy Farquharson.	DINING ROOM
<h2>NOTES</h2>			

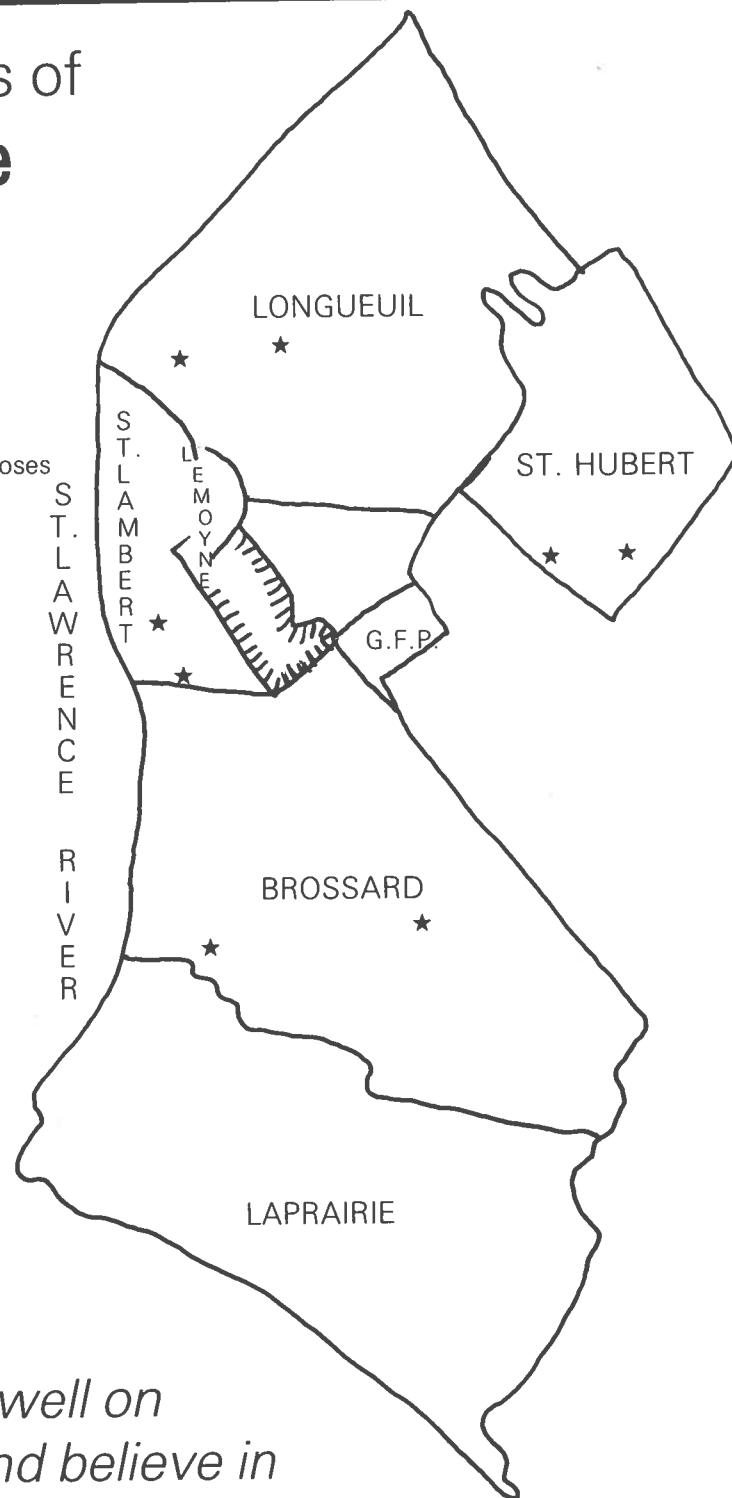


# Compliments of St. Lawrence Protestant School Board

administering for school purposes  
the municipalities of

BROSSARD  
GREENFIELD PARK (part)  
LONGUEUIL  
ST. LAMBERT  
ST. HUBERT (part)  
LAPRAIRIE  
VILLE LEMOYNE

★ — SCHOOL



*We wish you well on  
your theme and believe in  
your endeavor*

*Caspar L. M. Esselaar*

TAX CONSULTANT  
BOOKKEEPING SERVICE

4825 Lalande Blvd.,  
Pierrefonds, Quebec  
H8Y 1V4

(514) 684-9670

## Compliments of **WESTPARK**

Home and School  
Association  
and  
Westpark School Committee

Compliments of  
**A.D.S. ELEMENTARY**  
School Committee

*Best wishes*  
**Malcolm Campbell  
High School  
Home and School  
and  
School Committee**

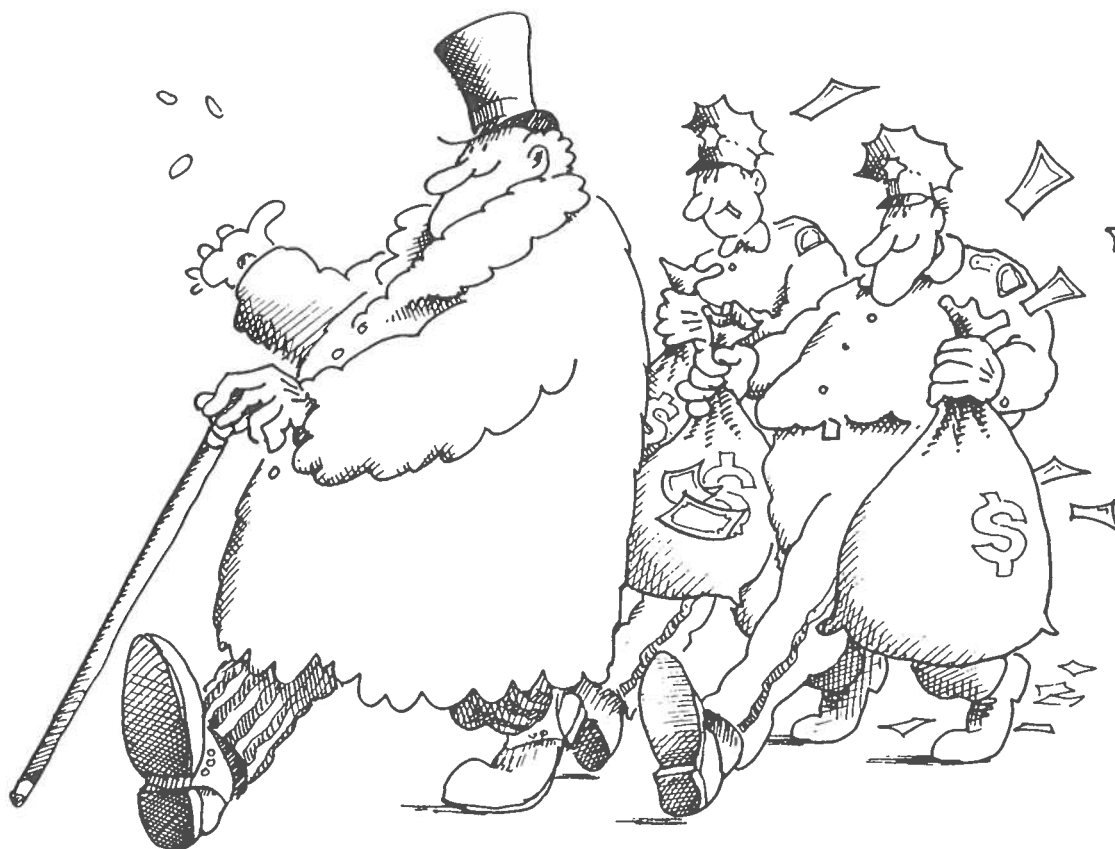
*With best wishes*  
**HAMPSTEAD**  
Home and School Association

## **The St. Maurice Protestant School Board**

Parents – Teachers  
Administrators – Commissioners  
Working Together  
for the Benefit  
of the Students

**1241 NICOLAS PERROT STREET  
TROIS-RIVIÈRES, P.Q. G9A 1C2**

**(819) 374-3205**



## Hey, big spender

If there was an instant formula for success, we'd all be millionaires today.

However, there is one sure way that we, as Quebecers, can improve our fortunes in the years to come. It's by making a commitment to public school education now so that our children are prepared for the future.

The new government has expressed a desire to improve education and maintain a high standard of teaching in our schools. But, is it willing to provide the funding required?

At a time when the fortunes of all Quebecers depend on sound financial planning, education is a wise investment.

**Education, the best investment you can make.**

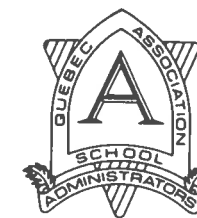
The Provincial Association of Protestant Teachers



## SATURDAY, MAY 3, 1986

8:30-9:00 a.m.	<b>REGISTRATION</b>	On the second floor, Campus Centre Building.	<b>GAMES ROOM</b>
9:00-10:00 a.m.	<b>KICK-OFF</b>	<b>LET'S TALK ABOUT ACCOUNTABILITY"</b> One of the greatest strengths of Home & School is its willingness to be accountable for its actions — from the individual member, to the local, provincial and national levels. Come and dialogue.	
	<b>Speakers</b>	Sylvia Adams, President, QFHSA Joy Bastness, President, The Canadian Home & School and Parent-Teacher Federation. <b>MEMBERSHIP and NEWSLETTER AWARDS</b>	
10:00-10:30 a.m.	<b>COFFEE BREAK</b>	Chance to see the displays	<b>OASIS LOUNGE</b>
10:30-11:30 a.m.	<b>CONCURRENT WORKSHOPS</b>	<b>#1 FRENCH IMMERSION: IS THE EXPERIMENT A SUCCESS?</b> Are our children becoming functionally bilingual? Workshop will discuss the latest studies done on the success/failure of the French Immersion method of instruction. Question and answer period. Pierre Yves Bezzaz, French Consultant, Protestant School Board of Greater Montreal Sharon Robinson, President, Willingdon Home & School Ruth Crabb, Lachine High Home & School	
	<b>Speaker</b>		
	<b>Chairman Coordinator</b>		

*Compliments of the*



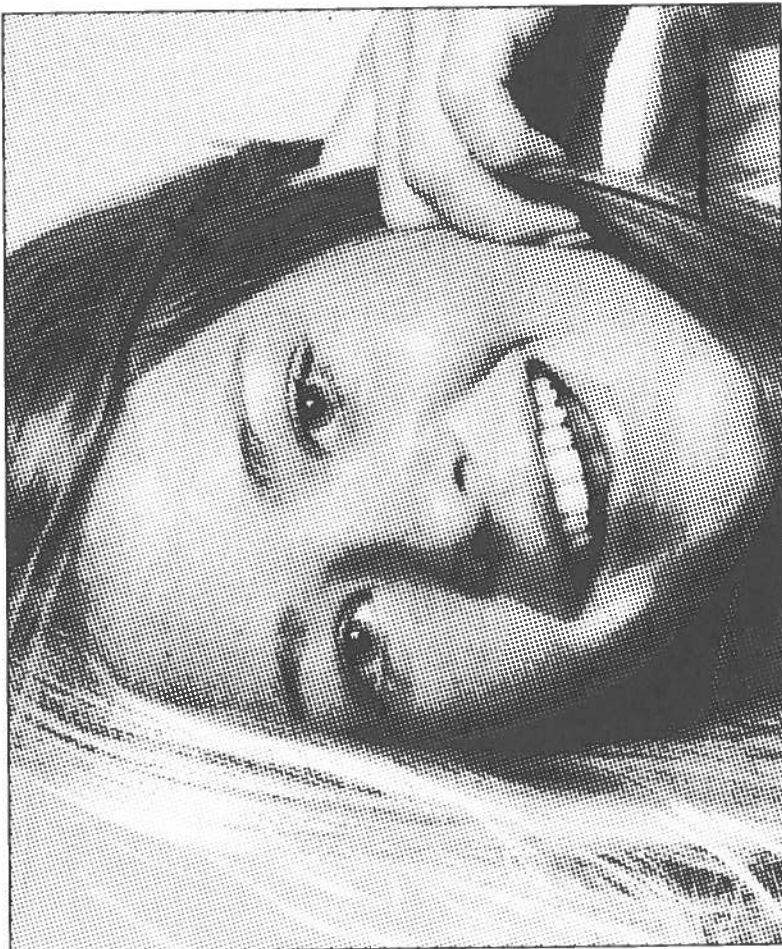
**Quebec Association of School Administrators**

*Compliments of*

**LAURENTIAN  
School Board**

# "I WAS FAILING."

*"I was failing. I just couldn't keep up. Now, at Westmount Learning Centre, I get all the special attention and support I need. My grades are back up and I'm looking forward to college."*



At Westmount Learning Centre students are individually assessed. Good study habits are promoted. Individualized instruction is available in a wide selection of elementary, high school, and CEGEP level courses. Summer make-up courses for credit are offered, as well as special courses for students in French Immersion. Westmount Learning Centre is open year-round and is recognized by the Quebec Department of Education.

For more information please contact the Registrar at (514) 932-4109

## Westmount Learning Centre

245 Victoria Avenue, suite 500  
Westmount, Quebec H3Z 2M6  
Permit No. 749-544



## FRIDAY, MAY 2, 1986

8:30-9:00 a.m.	REGISTRATION	On the second floor, Campus Centre Building.	GAMES ROOM BASEMENT
9:00-9:15 a.m.	WELCOME	Opening remarks by the President of Q.F.H.S.A.	
9:15-10:30 a.m.	PLENARY SESSION	<p><b>PARTNERS IN ACTION</b> Pupils, pedagogues, politicians and parents — the central actors in the daily drama of education: each a vital link in the chain — all, partners in action. Working together they represent a formidable energy and everything is possible; working antagonistically they raise insurmountable barriers and nothing is possible. How can we foster the constructive interactions and eliminate the destructive conflicts? How can parents best work together with each of the key players to enhance the overall quality of education?</p> <p><b>Panel</b> Sylvia Rankin, PARENT, Thorndale Elementary School. Bryden Murray, PEDAGOGUE, teacher at John Rennie High School. Joan Dougherty, POLITICIAN, MNA and parliamentary secretary to Minister of Education, Claude Ryan. Scott Conrod, surrogate PUPIL, Director of Student Services, PSBGM.</p>	
10:30-11:00 a.m.	COFFEE BREAK	Time to view the displays and visit.	OASIS  SHEEHEY  FEDELE
11:00-12:00 a.m.	CONCURRENT WORKSHOPS	<p><b>THREE SEPARATE WORKSHOPS HEADED BY THE PANELISTS</b> Delegates will have the opportunity to choose one of the workshops conducted by one of the panelists. There, during a more informal atmosphere, the many issues brought forward during the plenary can be discussed and examined.</p> <p><b>Parents and Pupils</b> Supportive parental involvement is fundamental to a sound education. The earliest education occurs in the home, and parents continue to have a dominating influence throughout the formative years. What takes place in the classroom is often undermined by what happens in the home. Increasingly, our schools are being called upon to play the role of surrogate parent. Are some parents shirking their responsibilities?</p> <p><b>Parents and Pedagogues</b> Home &amp; School Associations were founded on the premise that parents and teachers are both essential elements in a child's education. However, in some schools, antagonism, indifference and lack of communication inhibit meaningful cooperation. What sort of parental involvement do teachers regard as appropriate and helpful? What sort of responses do parents expect from teachers? How can we begin a constructive dialogue?</p> <p><b>Parents and Politicians</b> The recent debates on school reorganization brought into sharp focus the thorny question of the role of government in the management of education. How do we ensure a proper balance between the need for province-wide standards and the demands for local flexibility? How important are our local school boards? Are parents being consulted adequately on policy matters by the provincial and local education authorities?</p>	
12:00-12:30 p.m.	FREE TIME	Visit the diplayers. Find out what's new.	

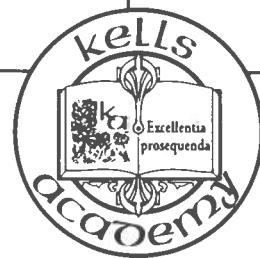
Give your child an opportunity  
to learn and prosper at Kells Academy,  
where education meets individual needs.

# Kells Academy

- ☐ A unique English-language coeducational day school
- ☐ Offers a supportive individualized learning environment with a low student/teacher ratio
- ☐ Provides full academic programmes at both the elementary and secondary level
- ☐ Privately funded and tax deductible

- ☐ Recognized by the Quebec Department of Education but does not require a Certificate of Eligibility

Applications for admission 1986/87 are now being accepted.  
For further information please contact  
Irene Woods, Director:  
**(514) 932-4100**



A division of Westmount Learning Centre  
245 Victoria Avenue, Suite 500  
Westmount, Quebec H3Z 2M6 (514) 932-4100

Permit No. 749-973

12:30-1:30 p.m.	<b>BUFFET LUNCH</b>	Served in the Main Lounge on the second floor.	<b>GAMES ROOM</b>
1:30-5:30 p.m.		To be held in the basement. Coffee break at 3:30.	
5:30-6:30 p.m.		In the Main Lounge on the second floor. Cash bar.	
6:30-8:00 p.m.		Dining room on the first floor. Guest speaker — Hon. Robert Layton, P.C., M.P. Minister of State (Mines). Mr. Layton is very interested in the concerns of English-speaking Quebecers. We are certain that Mr. Layton's address will prove of interest to us all.	
8:15-10:00 p.m.	<b>INFORMAL SESSION</b>	A chance to talk informally.	<b>OASIS LOUNGE</b>

Métro Vendôme


**centre des arts visuels**

*SCHOOL, GALLERY, BOUTIQUE*  
*Specialized in applied arts*

350 ave. Victoria, Montreal, Que. H3Z 2N4  
Telephone: (514) 488-9558

**Macdonald High School**  
A PROUD TRADITION



*Vires Acquirit Eundo*

17 Maple Avenue  
Ste. Anne de Bellevue H9X 2E5

Founded 1907



  

**LES DISTRIBUTIONS LA MONTAGNE**  
819/564 1014

**Claire Dalpé**  
consultante  
Rive-Sud,  
Centre de Montréal  
1445, rue Balmoral  
St-Hubert (Québec)  
J4T 1B4  
Tél.: (514) 445-4558  
Sans frais : 1-800-567-3435

**Fund Raising**

  **LIFESAVERS**