

# Chester Priority Sector

May 29, 2024



Natalia Segal  
natalia.segal@ndg.ca

Aris Kalofoutis  
aris.kalofoutis@ndg.ca

# Goals

1. Define the limits of the Chester Priority Sector

2. Create a survey to understand the demographics, education, income, housing conditions and rent, road safety, food security, and public security issues in the area.

3. Analyze survey data to create an action plan to tackle the needs and improve the living conditions in the sector.

# Methodology

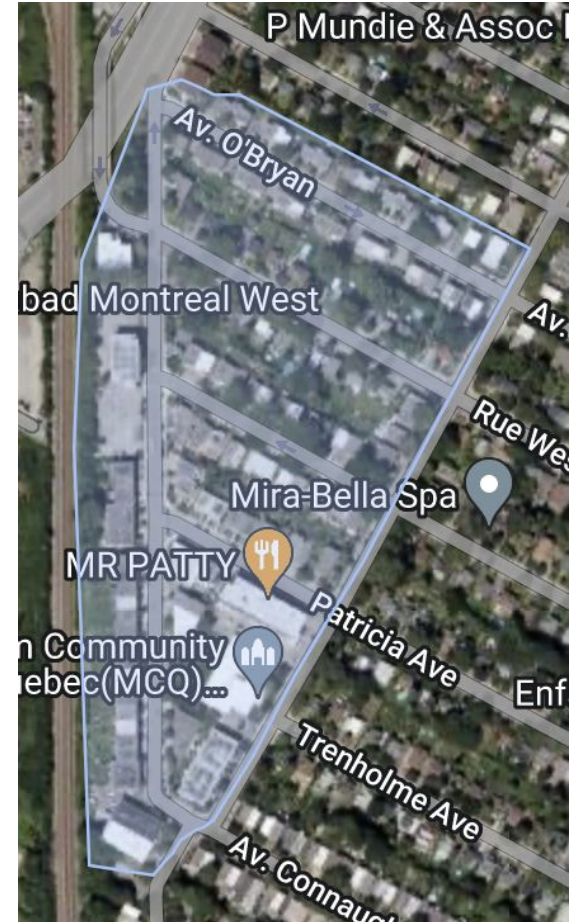
## **Assessing Chester's Boundaries:**

*Exploratory walk over three days:*

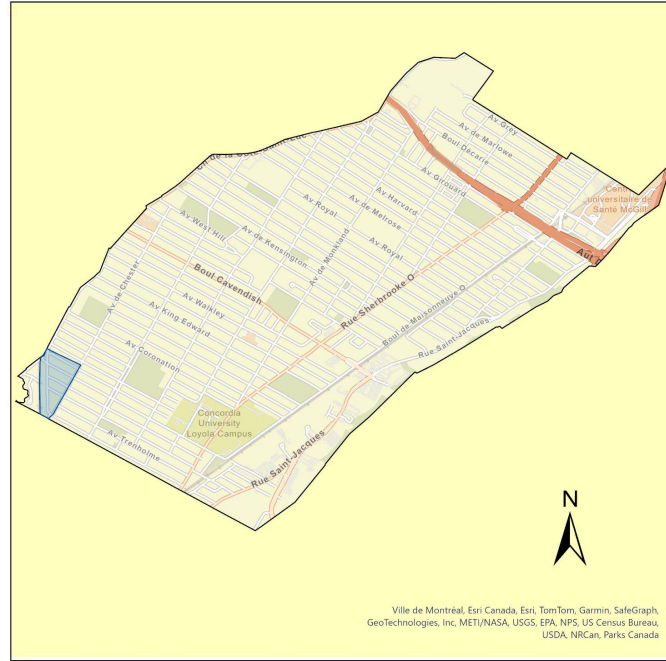
Assessed boundaries at points where  
there are extreme differences in areas  
(e.g. housing goes from quadruplets to  
newly renovated one-family housing)

Confirmed boundaries with NDG

Community Council



## NDG and The Chester Priority Sector



# Methodology

## A. Urban Semiotics

- a. Anti-Theft Signs
- b. Extended Sidewalks
- c. Planted Trees
- d. Lawn / Front Yard maintenance
- e. Green Spaces

## B. Housing

- a. Number of Units (Single, duplex, Quadruplex)
- b. Renovation vs Deterioration
- c. Properties for sale/ rent

## C. Available transportation

- a. Distance to bus stops/ train station
- b. Car ownership
- c. Car type

## D. Amenities

- a. Grocery Stores
- b. Pharmacies
- c. Restaurants

## D. Schools

- a. Primaire/Secondaire
- b. Funding

# Some of Our Observations:



Tandem Signs



IGA - \$\$\$



Gentrification

# Indice d'équité des milieux de vie

- Locate living environments with increased urban vulnerabilities in order to generate the prioritization and **convergence of municipal investments**.
- The index represents the growing communities of social, economic, environmental, access to local resources, access to cultural, sport and leisure and urban safety resources.
- **The threshold of 4 vulnerabilities represents the minimum threshold**, so only dissemination areas with at least 4 vulnerabilities must be retained to **prioritize municipal interventions and investments**.



# Indice d'équité des milieux de vie - 2023



Indice d'équité des milieux de vie - 2023

## Niveau de priorisation

- ☒ Vulnérable et prioritaire (4,5,6)
- ☒ Vulnérable non prioritaire (3)
- ☐ Non vulnérable (0,1,2)

## Dimension de vulnérabilité




- Culture, Sports et Loisirs
- Ressources de proximité
- Sécurité Urbaine
- Environnemental
- Économique
- Social





# Indice d'équité des milieux de vie - 2023

## Niveau de priorisation

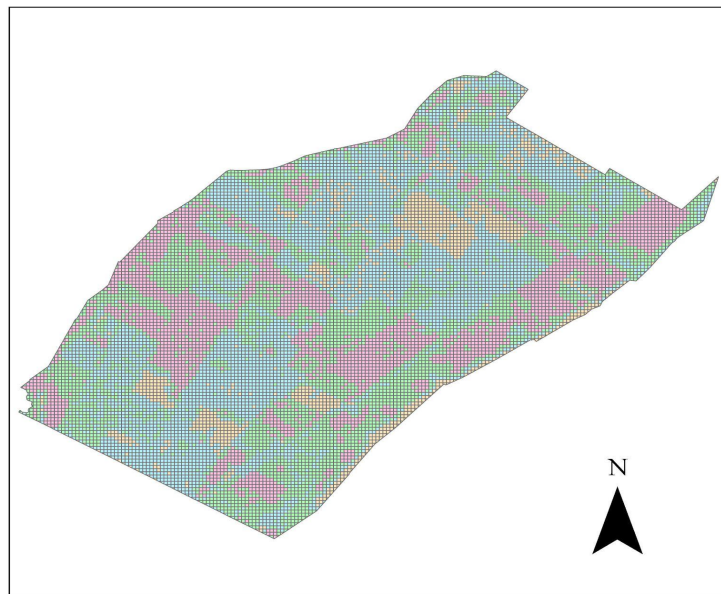
- ☒ Vulnérable et prioritaire (4,5,6) 
- ☒ Vulnérable non prioritaire (3) 
- ☐ Non vulnérable (0,1,2) 

## Dimension de vulnérabilité

- Culture, Sports et Loisirs 
- Ressources de proximité 
- Sécurité Urbaine 
- Environnemental 
- Économique 
- Social 



**Zones prioritaires à verdier  
pour diminuer les impacts des vagues de chaleur**



0 0.28 0.55 1.1 Kilometers

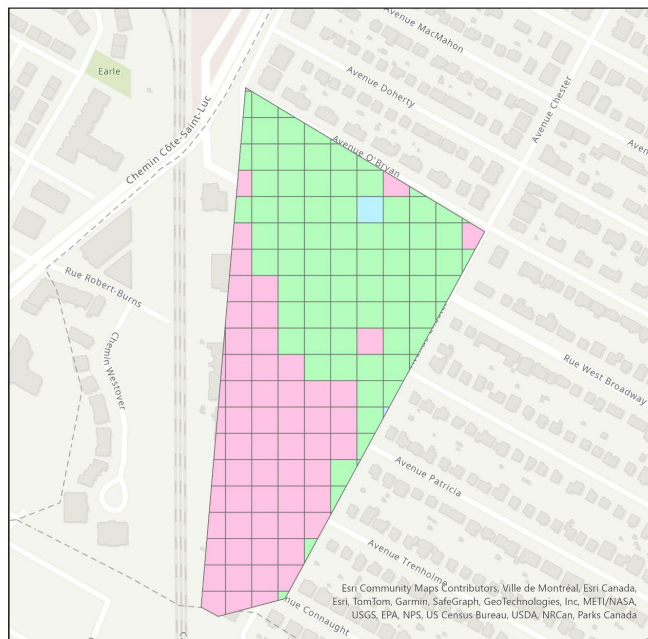
**Legend**

**Zones**

Priorité 1  
Priorité 2

Priorité 3  
Aucune priorité

## Zones prioritaires à verdir pour diminuer les impacts des vagues de chaleur (Chester)



### Legend

#### Zones

Priorité 1	Priorité 3
Priorité 2	Aucune priorité

# Defining Material and Social Defavorisation:

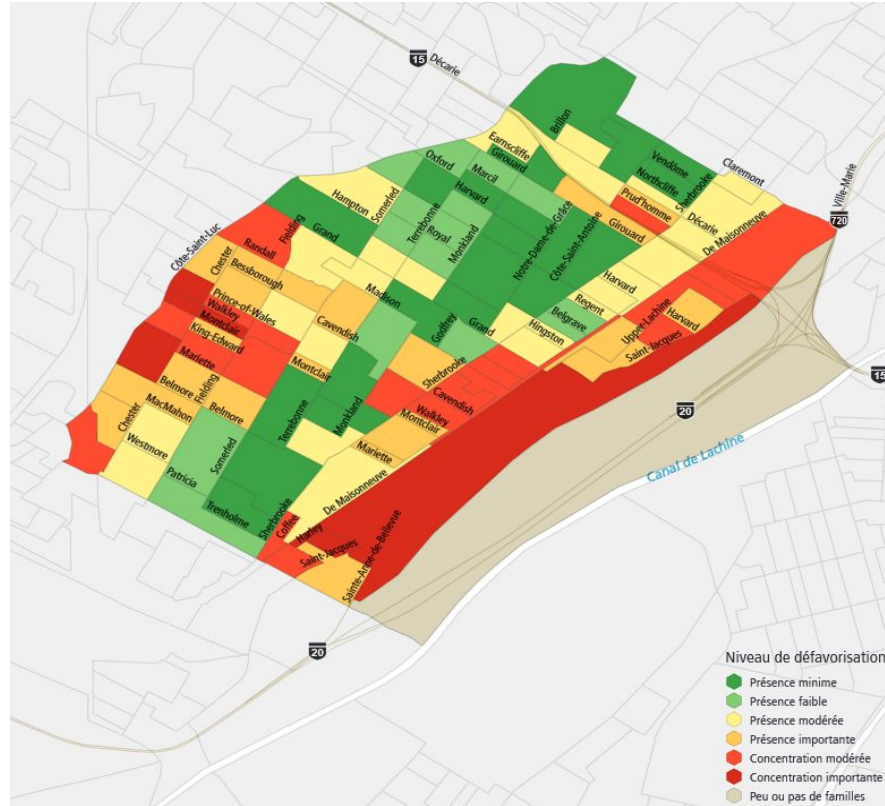
## ***Material defavorisation:***

- Reflects the deprivation of goods and conveniences of current everyday life.

## ***Social defavorization:***

- It reflects the fragility of the social network, both at the family and community level.

# Social and Material Defavorisation - 2016



# Indice d'équité des milieux de vie - 2023



Indice d'équité des milieux de vie - 2023

## Niveau de priorisation

- ☒ Vulnérable et prioritaire (4,5,6)
- ☒ Vulnérable non prioritaire (3)
- ☐ Non vulnérable (0,1,2)

## Dimension de vulnérabilité

- Culture, Sports et Loisirs
- Ressources de proximité
- Sécurité Urbaine
- Environnemental
- Économique
- Social



# Methodology

## Creating the Survey:

- Extracted data from [censusmapper.ca](https://censusmapper.ca), CIUSS, Ville de Montreal
- Took existing survey used from NDG du Futur and modified with questions relevant to the Chester area (as determined by statistical analysis)
- Translated into French and Arabic

## Administering the Survey:

- Go to [local businesses](#) and ask questions, also distribute flyer with QR code
- Prior to door-to-door, distribute [flyer](#) to each house we will survey
- Go door-to-door on a street-by-street basis



# Objectives

**From the survey results, we are hoping to understand Chester's:**

- Demographic
- Amenities
- Green Spaces
- Strength of the Community
- Weaknesses of the Community
- Threats to the Community
- Opportunities for Equitable Development

Any Suggestions?