

CAMI



CAMI'S ANNUAL GENERAL MEETING
2018-2019

CAMI

COUNCIL FOR ANGLOPHONE MAGDALEN ISLANDERS



Welcome





Mandate

CAMI is a regional organization that was founded in March 1987 to support the minority English-speaking community of the Magdalen Islands.

MANDATE

To promote and motivate the English-speaking community of the Magdalen Islands by encouraging them to improve and strengthen networks within the English and French speaking communities, thus fostering community vitality and supporting community development in the following areas: health & social services, education, economic development, the arts and preservation of culture and heritage.



Board of Directors 2018 - 2019

President - Katherine Gibson-McCartney

Vice-President - Ronald Goodwin

Secretary-Treasurer - Linda Clark

Director - Dorothy Taker

Director - Selena Clark

Director - Myriam Pealey

Director - Pauline Boudreau



Staff 2018 - 2019

Executive Director - Helena Burke
Accounting Manager - Amanda Goodwin
Executive Assistant - Jonathan Patton
Seniors Outreach Agent - Lisa Craig
Health & Wellness Liaison Agent - Maude Arseneau
Wheels on Meals Coordinator - Robin Aitkens
Animator - Amber McKay
Tour Guide - Rosanna Taker
Tour Guide - Roxanne Boudreau
Entry Island Tour Guide - Diane Chenell
Tour Guide Thelma - Ann Feltmate
Development Agent- Darrell Burke
Development Agent - Casey Clarke
Tourism Development Agent - Ezgi Cakmak



Staff 2018 - 2019 continued

Museum Greeter - Maria Burke

Replacement Daycare Worker – Paula Burke

Customer Service Agent - Brandi Clarke

Customer Service Agent - Robert Weeks

Museum Greeter - Haley Dickson

Early Childhood Coordinator - Charlene Cyr-Benard

Customer Service Agent - Krista Clarke

Community Garden Animator - Nicholas Chenell-Morrison

Pickling Assistant - Benita Clarke

Communications Agent - Karina Cyr

Youth Agriculture Intern - Rose Seguin

Animator - Valerie Clark

Tour Guide - Jan Kelly

Development Agent - Nigel Quinn

Development Agent - Jarrett Quinn

CAMI
COUNCIL FOR ANGLOPHONE MAGDALEN ISLANDERS

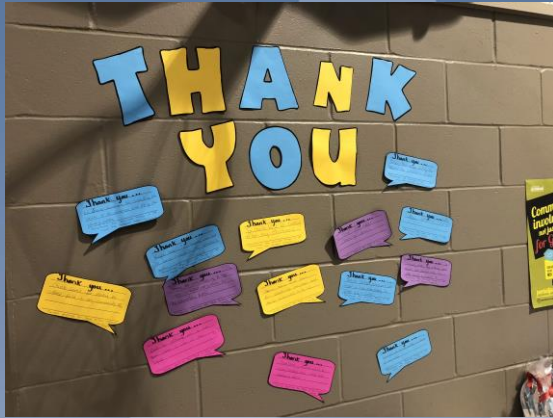
The background features several large, light blue silhouettes of birds in flight, arranged in a circular pattern. In the upper left quadrant, there is a cluster of five smaller, colorful bird silhouettes in blue, yellow, red, green, and grey.

Canadian Heritage Program Funding





Volunteer Appreciation



“Remember that the happiest people are not those getting more, but those giving more.”

– H. Jackson Brown Jr.



Remembrance Day



Thanks to the support of the East End Fire Department, the Holy Trinity church, Grosse Ile School and local volunteers, CAMI hosted its annual Remembrance Day Service.

CAMI was fortunate to receive a visit from the Department of National Defense again this year.



Historical Heritage Complex

(Little Red School House, Veteran's Museum & Memorial Park)

- The Historical Heritage Complex welcomed 2202 visitors in 2018, representing an increase of 367 visits from 2017
- There has been an increase in independent visits
- Museum admissions and merchandise sales increased by \$2,468 from \$11,244 in 2017, to \$13,712 in 2018



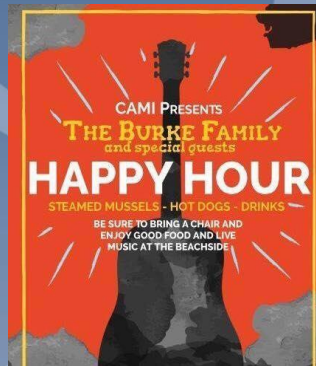
Entry Island Heritage Museum



- Entry Island museum saw 1005 visitors in 2018, a decrease of 91 visits from 2017
- Maintained Head Tour Guide position, provided employment to 4 Assistant Guides
- Incorporated heritage workshop and walking tours
- Generated approximately \$6,000 in revenues through museum admissions and sales



Cultural Program





ROMIM

Collaborated with the Musee de la Mer and the Centre d'interpretation du Phoque to begin working on developing a concept and content for the purpose of producing a mobile application to promote and reference the history of the islands via the three museum organizations





Entry Island Revitalization

- Purchased Entry Island school building
- Produced museum concept report and building plans for renovation project
- Hired Development Agent via the FAIR program
- Began researching potential programs for renovation project and submitting applications
- Met with various partners to sensitize them to the project and developed collaborations when possible
- Began working on marketing strategy
- Secured \$10k with SADC for implementation of marketing strategy

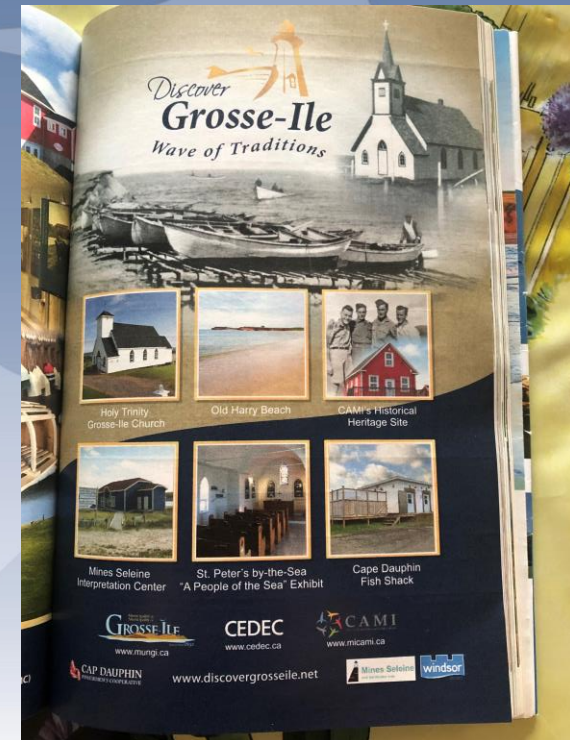




Community Marketing Strategy - Discover Grosse Ile

CAMI, in collaboration with the Municipality of Grosse Ile and the CEDEC, has been implementing the Discover Grosse Ile Marketing Strategy, which included the following:

- Full Page Ad in the ATR's Tourist Guide
- Mass production & distribution of Discover GI pamphlets
- Discover Grosse Ile facebook page and website
- Poster on the CTMA ferry
- Etc...





STRENGTHENING VISIBILITY PARTICIPATION & LEADERSHIP

- Leveraged other funding (\$635,355 over and above the PCH core)
- Provided input into important consultations hosted both by the federal, provincial & local governments
- Hosted Minister Responsible for Relations with English-speaking Quebeckers
- Participated in various provincial conferences and focus groups
- Worked with CASA and Vision Gaspé to develop joint projects regionally
- Co-developed the Eastern Quebec Rural Development Network for Anglophones to specifically address issues



CAMI

COUNCIL FOR ANGLOPHONE MAGDALEN ISLANDERS



COMMUNICATIONS

- NEWSLETTERS
- RADIO CAPSULES
- SOCIAL MEDIA POSTS
- ENGLISH PAGE IN THE RADAR



ORGANIZATIONAL CAPACITY BUILDING

- GENERAL ORGANIZATIONAL ADMINISTRATION
- PLANNING & TRAINING FOR BOARD AND STAFF
- BOARD MEETINGS
- AGM & ANNUAL REPORT

CAMI
COUNCIL FOR ANGLOPHONE MAGDALEN ISLANDERS

The background features several large, light blue silhouettes of birds in flight, arranged in a circular pattern. In the upper left quadrant, there is a cluster of five smaller, colorful bird silhouettes in shades of blue, yellow, red, green, and grey.

**COMMUNITY CULTURAL
ACTION FUND**





IF THESE WALLS COULD SPEAK PROJECT

This project sought to design an interactive multimedia exhibit that married history and lore to educate, inspire and archive. The first year of this project included research to help gather the Irish and Scottish legends and folklore surrounding the sea and research around the various multimedia options.

Studied in detail work of Byron Clark on the maritime history of local Anglophones. His book *To find but a grave* on the wreck of the *Miracle* was a jumping off point to develop a rich story that would both touch on an important local event that could also inform on the historical context of the Irish Famine and its effects on immigration to the Islands and the country at large.



CAMI
COUNCIL FOR ANGLOPHONE MAGDALEN ISLANDERS



HEALTH & SOCIAL SERVICES

CHSSN

Community Health
And Social Services Network
Réseau communautaire de santé
et de services sociaux



Health
Canada

Santé
Canada



Support for out of region health services

ARE YOU TRAVELLING TO QUEBEC CITY FOR HEALTH SERVICES?

LOOKING FOR SUPPORT WHILE YOU ARE THERE?
A patient navigator can accompany you while you are in Quebec city

navigator@qchfoundation.org
418-932-0095
www.travel4health.ca

In addition to promoting the Patient Navigator service, CAMI acted as a direct link between the community and the Navigator Steve Guimond

WWW.TRAVEL4HEALTH.CA

VOUS VOYAGEZ À L'EXTÉRIEUR POUR DES SOINS DE SANTÉ?
Un déplacement hors région pour que vous ou un proche receviez des soins de santé peut engendrer plusieurs questions.

Les traitements ou les examens médicaux peuvent déjà représenter une difficulté en soi. C'est peut-être votre premier déplacement en ville ou par avion. Vous aurez peut-être à déboursier pour des frais inattendus. Il est bon de prévoir un accompagnateur qui vous soutiendra. De plus, vous n'êtes peut-être pas suffisamment bilingue pour discuter en toute confiance de questions médicales en français.

Parmi les informations utiles, la "trousse" contient:

- Une liste d'accmodations abordables
- Informations utiles concernant les frais remboursés
- Informations utiles concernant les accompagnateurs prescrits
- Divers autres soutiens disponibles

TRAVELLING OUTSIDE THE REGION FOR HEALTH SERVICES?
If you or someone close to you needs to travel outside your region for health services, you might have many questions.

Just having to deal with medical tests or treatments can be difficult in itself. In addition, you may be going to a city or taking a plane for the first time. You may have out-of-pocket expenses that you had not planned for. You may be bringing a support person (escort) with you. And you may not speak French well enough to feel confident discussing medical information.

Amongst the helpful information, the "toolkit" contains:

- List of affordable accommodations
- Information regarding costs and refunds
- Information for bringing a support person
- Who you can turn to for help

La "trousse" est disponible sur le site web suivant : <https://www.travel4health.ca>

The "toolkit" is available on the website <https://www.travel4health.ca>

CAMI **CHSSN**

Planifying our present, building our future. **Our Healthy Health, Our Healthy Health, Our Healthy Health.**

For plus d'information/ For more information:
Lisa Craig, Outreach Agent
Téléphone/ Telephone: 418-985-2116 ext. 3
Courriel/Email: health@micami.ca

SCANNEZ CEQ
SCAN THIS



Community Health Education Program (CHEP)

CHEP seeks to increase the availability of health promotion and disease prevention information for ESCs and increased collaboration between community and public health professionals.

SESSIONS:

- Mental Health
- Cancer Awareness
- Eating Well





Senior's Strategy

Began implementing seniors strategy in collaboration with several partners:

- Municipality of Grosse Ile
- Grosse Ile School
- CAB
- Collective Kitchens
- CISSS
- L'Essentiel
- APPUI





Meals on Wheels for Seniors

Delivered Meals on Wheels to seniors in Grosse Ile, Grand Entry & Entry Island:

- 243 meals delivered to Grosse Ile
- 100 meals delivered to Grand Entry
- 563 meals delivered in Entry Island

The Meals on Wheels program is made possible via a collaboration with the CAB, funding from the NPI Outreach project and the generosity of community volunteers





EQUIPE SANTE

Students from GIHS volunteered their time to support the local hospital foundation in their annual fundraising campaign “Equipe Sante”

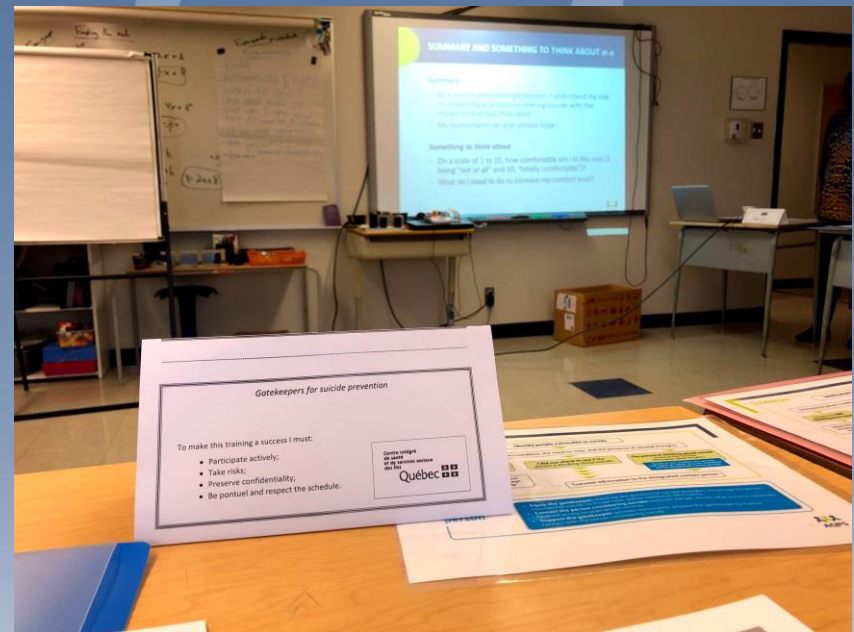
Students went door-to-door to pick up donation envelopes in Grosse Ile, East Cape and Old Harry!





SUICIDE PREVENTION – GATEKEEPERS TRAINING

11 community resources participated in the suicide prevention training from CAMI, GHS and the Municipality. This training was provided by the Sante Publique GIM





Regional Planning for the Development of the ESC of the Gaspé-Magdalen Islands' Region

CAMI continued to work with CASA and Vision on regional dossiers:

- Health & Harmony Campaign
- Travel4Health / Toolkit / Patient Navigator
- Cancer Gaspésie
- Bright Beginnings
- Wellness Centre and ITMAV Evaluation
- Mental Health Task Force
- RESSORT



RECRUITMENT AND RETENTION OF HEALTH PROFESSIONALS





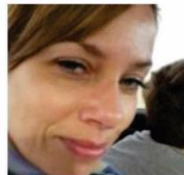
McGill Retention Project & Community Bursary Program

3 category 1 Bursaries Awarded:

- Sabrina Clarke (\$10,000)
- Kelly Chenell (\$5,000)
- Simon-Frederick Richard
(\$10,000)

2 Category 2 Bursaries Awarded

- Janice Lemay-Lewis (\$2,500)
- Daniel McIntyre (\$2,500)



Janice Lemay-Lewis



Kelly Chenell



Simon Frederick Richard



Sabrina Clarke



Daniel McIntyre

CAMI
COUNCIL FOR ANGLOPHONE MAGDALEN ISLANDERS



Community Outreach



Youth Strategy Implementation



CAMI, in collaboration with Grosse Ile School and the Municipality continued to implement the Youth Health and Well-being Strategy which was largely based around offering leisure, recreational and health education activities



Community Innovation Fund

2018-2019

- 2 students placed in a work program with local businesses (carpentry & small engine mechanics)
- Carpentry program for Grade 9 students
- Developed a carpentry program for vulnerable boys with included math modules
- Planted and maintained the school garden and greenhouse



<https://www.youtube.com/watch?v=843z406RuN0>



Employment and
Social Development Canada

Emploi et
Développement social Canada



Seniors Outreach Program

Community approach to help alleviate the feeling of isolation for seniors and to promote their autonomy as well as encourage their social participation.

36 seniors and 2 couples reached last year

168 home visits
154 phone calls





Card games

Each Thursday night approximately 12 seniors get together for a night of cards. This activity is held at the Anglican parsonage and is very much appreciated by the seniors that participate. It provides a social space for seniors, especially for those that are living alone and that are more isolated.





Christmas Hampers & Children's Choir

Led by CAMI's Senior's Liaison Agent, students and volunteers delivered Christmas Hampers to seniors while singing Christmas Carols. More than 50 hampers were delivered.





WELLNESS CENTRES

In 2018-2019 CAMI collaborated with the CISSS and other partners to provide 7 Wellness Centres (4 in Grosse Ile and 3 on Entry Island)





Other activities during the 18-19 fiscal year



- Provided home visits and referral services
- Provided accompaniment support
- Represented ES seniors at various tables and committees (SAPA, APPUI, MADA)
- Collaborated with the Senior's Outreach worker in Grande-Entrée to offer
- inter-community activities

CAMI
COUNCIL FOR ANGLOPHONE MAGDALEN ISLANDERS



EARLY CHILDHOOD DEVELOPEMENT



Worked with the Gaspé organizations (CASA & Vision) to host a regional forum on early childhood development that included participation from organizations and institutions from all over the region

Partnered with Grosse Ile High School to develop and implement a local Bright Beginnings program with included the hiring of an Early Childhood Consultant and the hiring of a tots play animator

Maintained the travelling literacy bag program and collaborated with the school and municipality to host a tots carnival day

Provided a temporary seasonal day care service for the 2018 fishing season



OTHERS:

- Fresh Fruit Snack : Once a week for Pre-k & K
- House visits to all parents of children 0-5 years
- Distributed information and learning tools: books, crayons, playdoh, etc.
- Provided training for Kindermusic program and began implementation
- Provided support to local family daycare provider



ENHANCING REGIONAL COMMUNITY CAPACITY

MANDATE EXPANSION:

- Developed steering committee to support project
- Hired consultants to work with the committee and CAMI in producing a knowledge development report

TRAVEL:

- Traveled to Montreal, Quebec City and the Gaspé for representation and training

TRANSLATION:

- Translated content for the English page of the RADAR paper



CONCORDIA & INNOWEAVE PROJECTS

Developing the Social Enterprise!

CAMI received a grant from Concordia University, via the SRQEA and from Innoweave via the McConnell Family Foundation to develop a social Enterprise organization.

- On April 17, 2018 the Entreprise Sociale les Iles was officially incorporated!
- Governance Structure developed
 - Business plans produced



Recognizing our Financial Partners



Government of Canada
 CHSSN
 McGill University
 Government of Quebec
 Communaute Maritime des Iles
 Municipality des Iles
 Agri-Foods Canada
 QCGN
 Concordia University
 Cape Dauphin Fishermen's COOP

Grosse Ile School / CLC
 Caisse Populaire Dejardins des Iles
 Municipality of Grosse Ile
 Development Social
 Cedec
 Windsor Salt
 SADC des Iles
 Fédération des Chambres du Québec

CAMI
COUNCIL FOR ANGLOPHONE MAGDALEN ISLANDERS



QUESTIONS?

CAMI
COUNCIL FOR ANGLOPHONE MAGDALEN ISLANDERS



THANK – YOU!!