



*A shining start for children ages 0-5*

Quebec English-Speaking Communities Research Network (QUESCREN) Forum:  
Minority Community Vitality through Education, October 29, 2018  
Presenter: Cathy Brown, Executive Director, CASA



## OUR VISION

The English-speaking community of the Gaspé Coast is a vital linguistic minority that actively participates in and contributes to the social, economic, cultural, and political life of the Gaspé Coast.

## OUR MISSION

To build and strengthen the vitality of the English speaking population of the Gaspé Coast by representing the community's interests and designing and delivering programs that respond to its needs.



# 8,090

English speakers on the  
Gaspé Coast

---

# 10%

of the total population of the  
Gaspésie

---

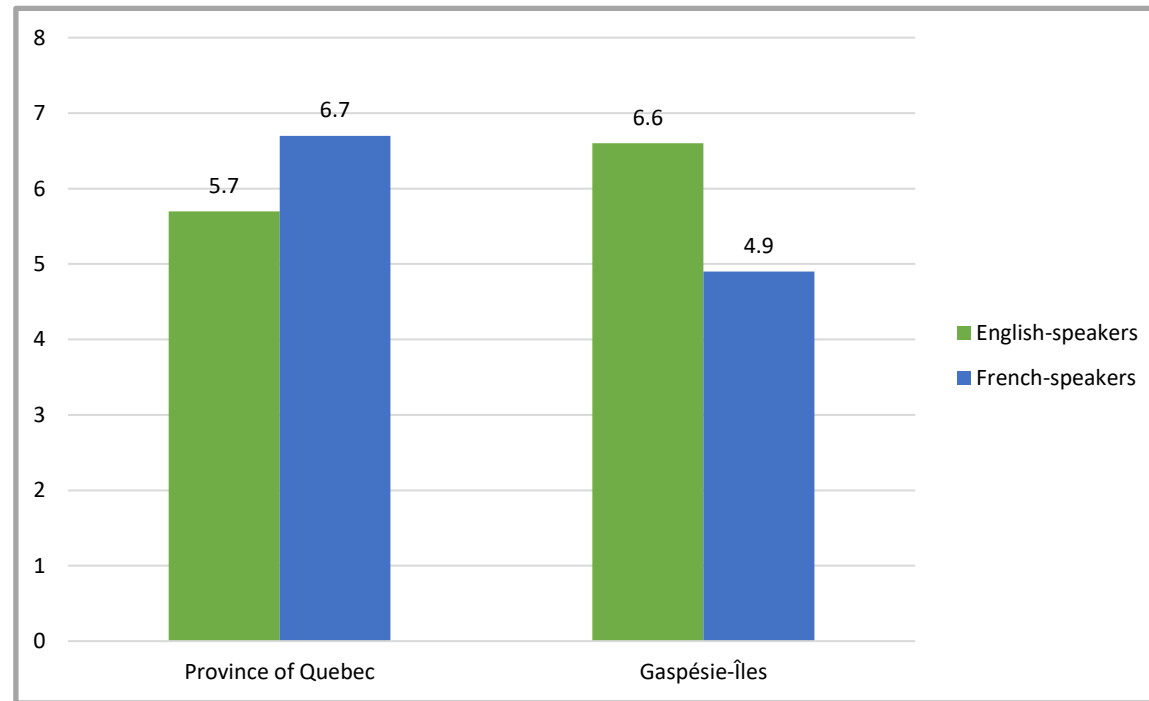
# 51%

Of children in  
kindergarten are classified  
as vulnerable

## Proportion of children (0-5) in the English and French-speaking population

In Québec, children 0-5 make up a smaller percentage of the English-speaking population than among French speakers.

*In GIM, the situation is reversed: children 0-5 make up a larger portion of the English-speaking population.*

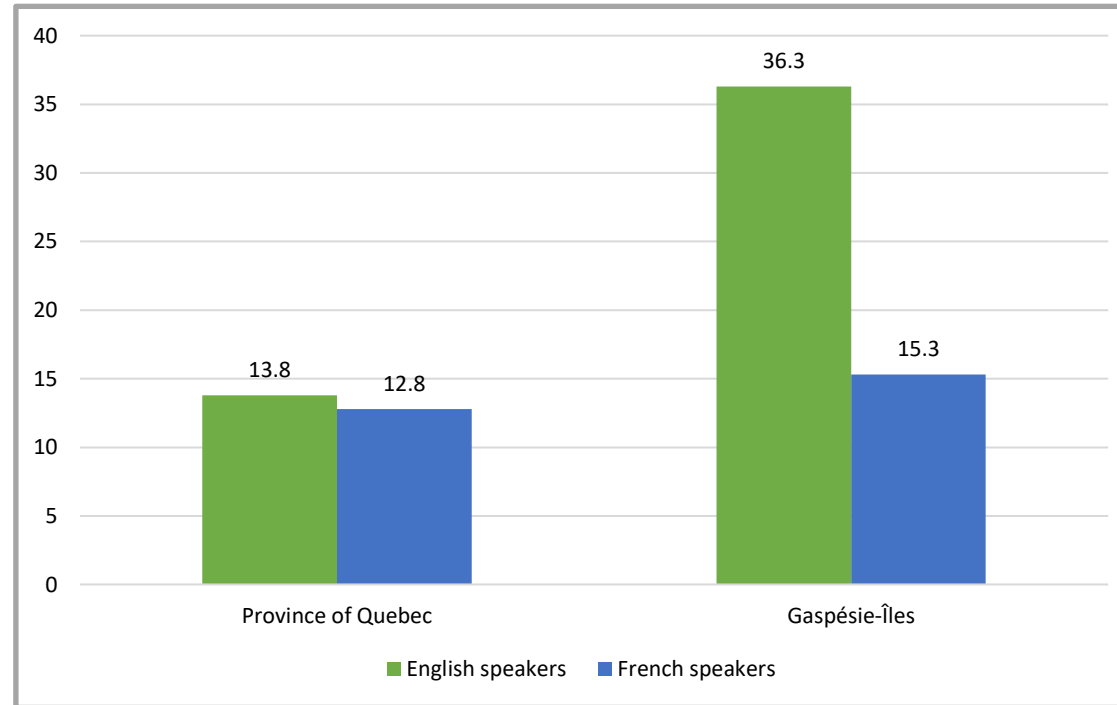


Source: J Pocock Research Consulting, based on data from the 2011 National Household Survey, Statistics Canada.

## Proportion of children (0-5) living in a lone-parent family

Provincially, children 0-5 live in lone-parent families in similar proportions.

*In GIM, however, a much larger proportion of English-speaking pre-schoolers live in lone-parent families.*



---

Generally, their  
parent's age group  
(ages 25 to 44)

have **low education attainment** (49.4%), substantially greater than Francophones of the same age (36.1%).

---

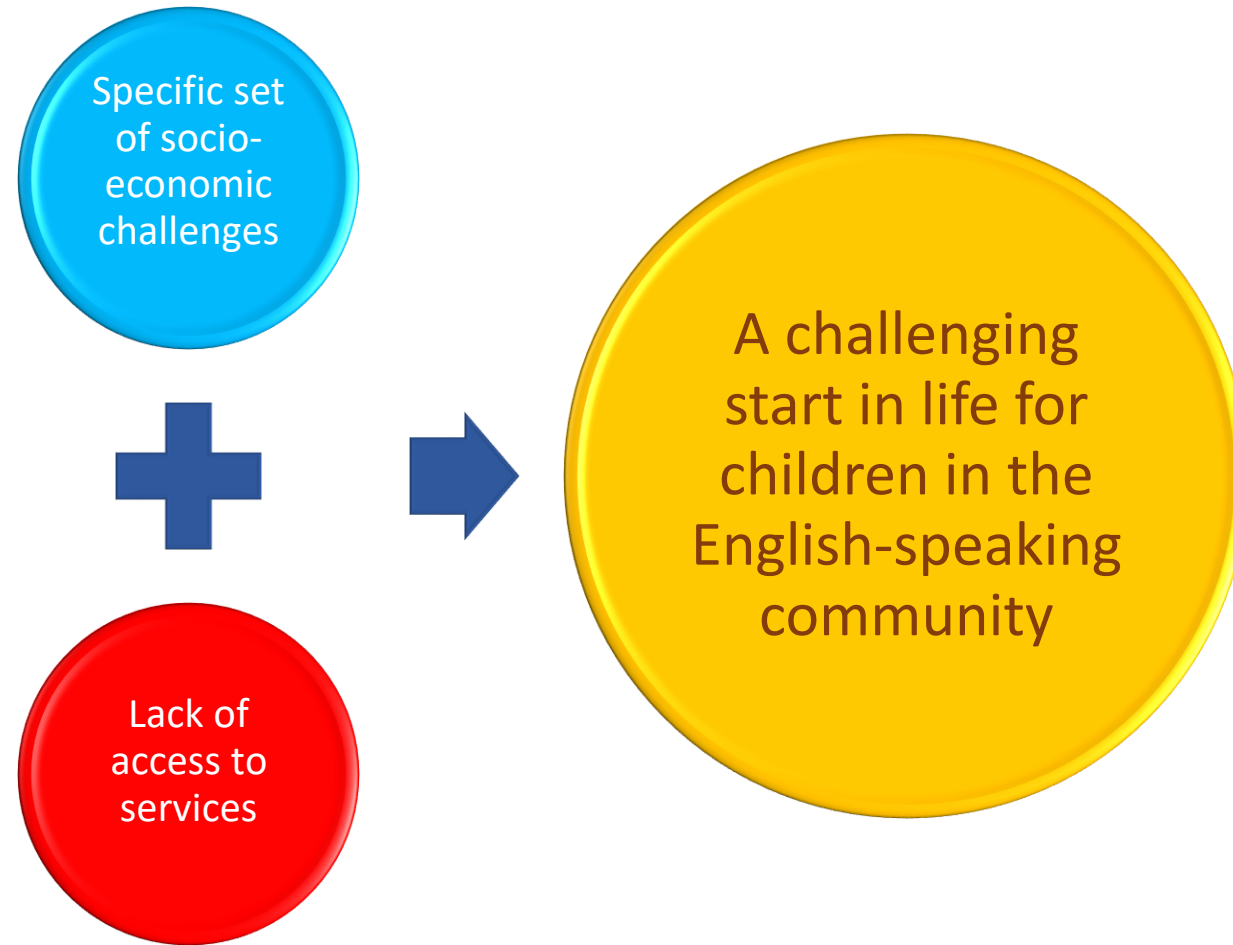
face an **unemployment rate of 27.2%** which greatly exceeds the proportion of unemployed French speakers (11.1%).

---

have a **greater tendency to live on an income of less than \$20,000** when compared to French speakers (39.2% compared to 22.3%).

---

*These figures do not take into account the  
socioeconomic status of parents aged 16-24*





# Zero to Five

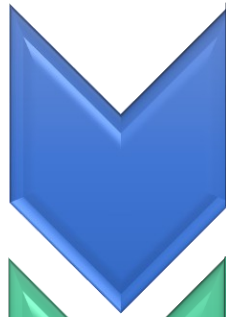
*Planning process: January 14, 2016*

*Welcome - Bienvenue*

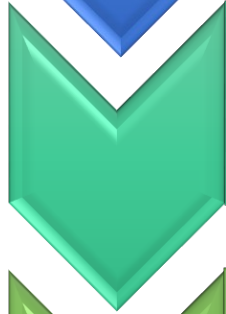




Activities 0-5	Anglo-accessible	Anglo participation	Situation
Mother Goose	Mother Goose	0-20%	Financially supported
Soutien PAELE Anglophone	Soutien PAELE Anglophone		
Imagier Cherche et Trouve	Croques-livre		
Intégrer de la lecture sur paniers d'épicerie	Nobody's Perfect program		
Eveil et fantaisie			
Accès biblio			
Animation du livre			
Accompagnement en education motrice			
Recettes: Belles/Bonnes/Pas chères			
Ateliers parents 0-5			
Maison de quartier Sandy-Beach			
Croques-livre			



- Thirty-seven programs for children 0 to 5 currently offered by health and social services partners in GIM



- Six are available in English (16%)

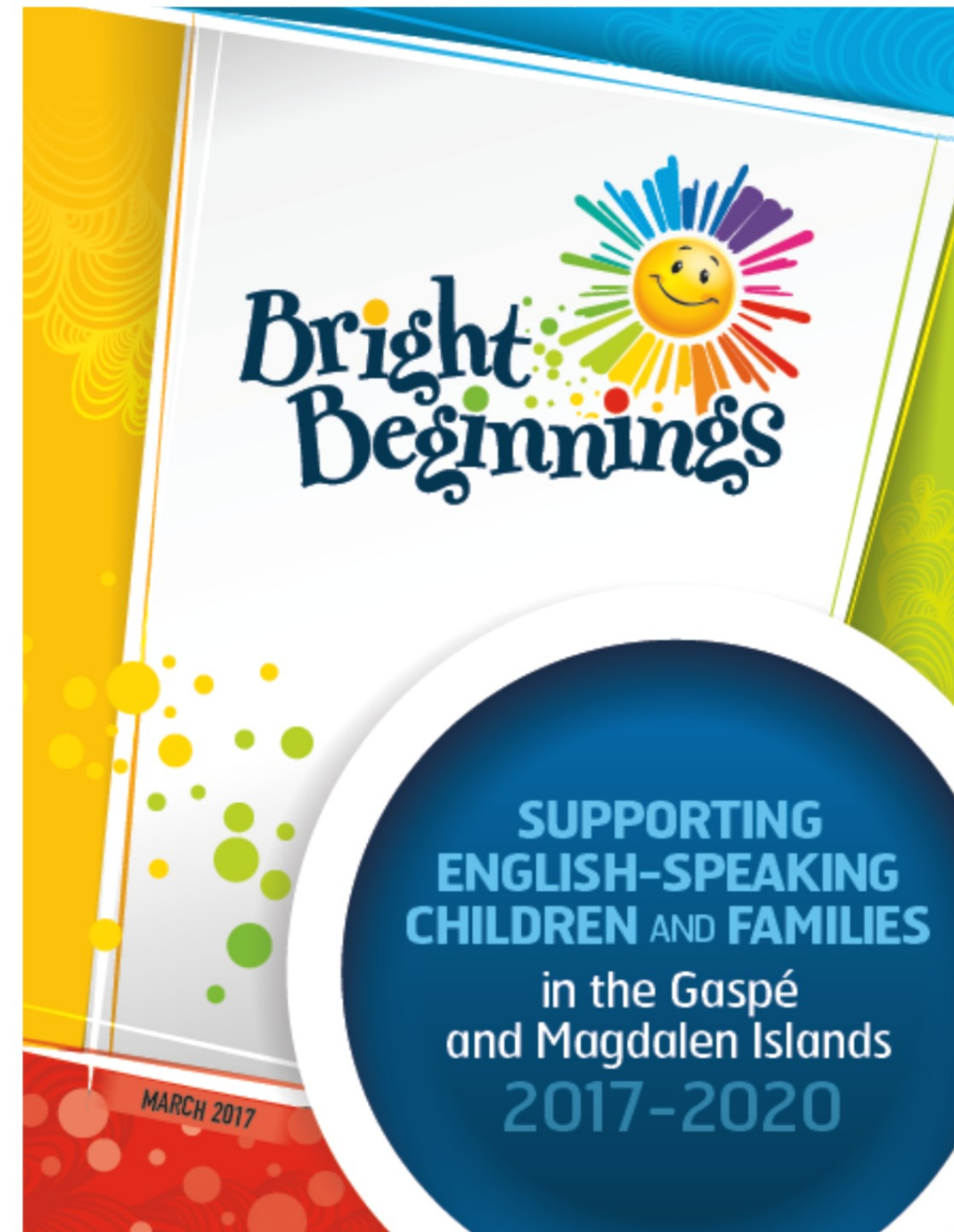


Participation rate between 0 and 20%

A Regional Committee for Early Childhood Development was established to examine the situation of English-speaking children ages 0 to 5 in GIM.

Members of the table have:

- identified needs
- established key priorities
- created a regional action plan in 2017



# BRIGHT BEGINNINGS

This program aims to support children aged 0 to 5 and their families in the Gaspé and Magdalen Islands by adapting existing services and developing new ones where none exist.







CASA, CAMI and Vision work to support  
English-speaking children and families in the GIM



Family  
Attachment



Early Childhood  
Development



Early Literacy and  
School Readiness



Parenting  
Support



## PROTECTIVE FACTORS BY SYSTEM\*\*

CHILD	FAMILY	COMMUNITY
<b>ORAL AND WRITTEN COMMUNICATION SKILLS</b> Ability to understand and express oneself through oral language Early reading and writing skills	<b>SOCIO-ECONOMIC LEVEL</b> Family income Level of educational achievement	<b>NEIGHBOURHOOD'S PHYSICAL AND SOCIAL ENVIRONMENTS</b> Availability of safe green spaces Housing quality (hygiene and affordability) Social cohesion Social capital
<b>COGNITIVE SKILLS</b> Sustained attention ability/memory Early numeracy skills General knowledge	<b>PARENTS' ATTITUDES</b> Sense of being competent (self-esteem/confidence) Mother's/father's aspirations with regard to their child's educational achievement Mother's/father's association with reading and writing	<b>ACCESSIBILITY AND QUALITY OF SERVICES</b> Daycare services Healthcare services Social services Community services Public transportation
<b>SOCIAL AND EMOTIONAL SKILLS</b> Peer relationships Sense of being competent/self-esteem	<b>PARENTING PRACTICES</b> Quality of the emotional and cognitive parent-child interactions Exposure to a variety of educational experiences Parent-child reading habits (early start, frequency)	<b>MOBILIZATION ON BEHALF OF EARLY CHILDHOOD EDUCATION</b> Collaboration between child, family and intervention practitioners Intervention practitioner' beliefs The community's involvement (alliances/partnerships)
<b>PHYSICAL SKILLS AND HEALTHY LIFESTYLE HABITS</b> Fine and gross motor skills Diet Sleep Physical activities		

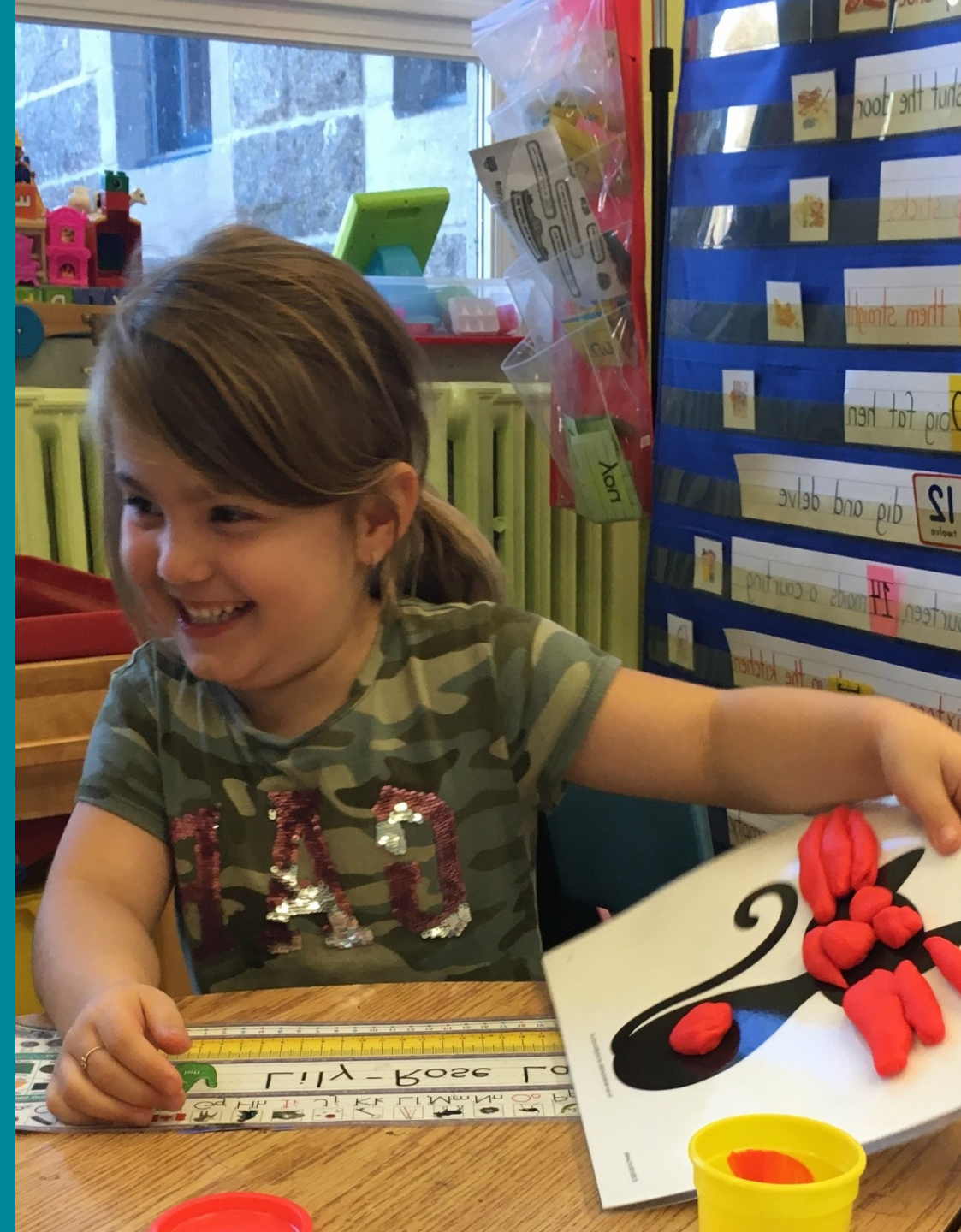
# Importance of the early years

Early childhood - the best time for taking actions





Early Childhood learning initiatives  
currently available to English speakers in GIM  
include educational, social integration  
and parental support activities  
primarily delivered by Eastern Shores  
School Board, Anchor Adult Education  
Centre, CASA, CAMI, VGPN and Family  
Ties-New Carlisle, and supported by  
multiple partners.





Wiggle, Rhyme and Storytime  
Bookcrunchers  
Toy Library  
Book bags for new parents in CLSCs  
Purée workshops  
Parents' Café  
Tiny Tots Expo  
Parent Toolkit





Bilingual Grocery Cart Reader  
by local English-speaking author



*A shining start for children ages 0-5*

- ~ CASA
- ~ CAMI
- ~ Vision Gaspé-Percé Now
- ~ Family Ties
- ~ Eastern Shores School Board
- ~ Anchor Adult Education Centre
- ~ Community Learning Centres
- ~ La Maison de la Famille Parenfant Gaspé
- ~ CAB Paspébiac
- ~ BDCAS
- ~ Avenir d'enfants
- ~ Développement Social MRC Cote-de-Gaspé
- ~ CISSS Gaspésie
- ~ Santé Publique
- ~ Développement Social MRC Bonaventure
- ~ Développement Social MRC Rocher Perce
- ~ Développement Social Iles-de-la-Madeleine



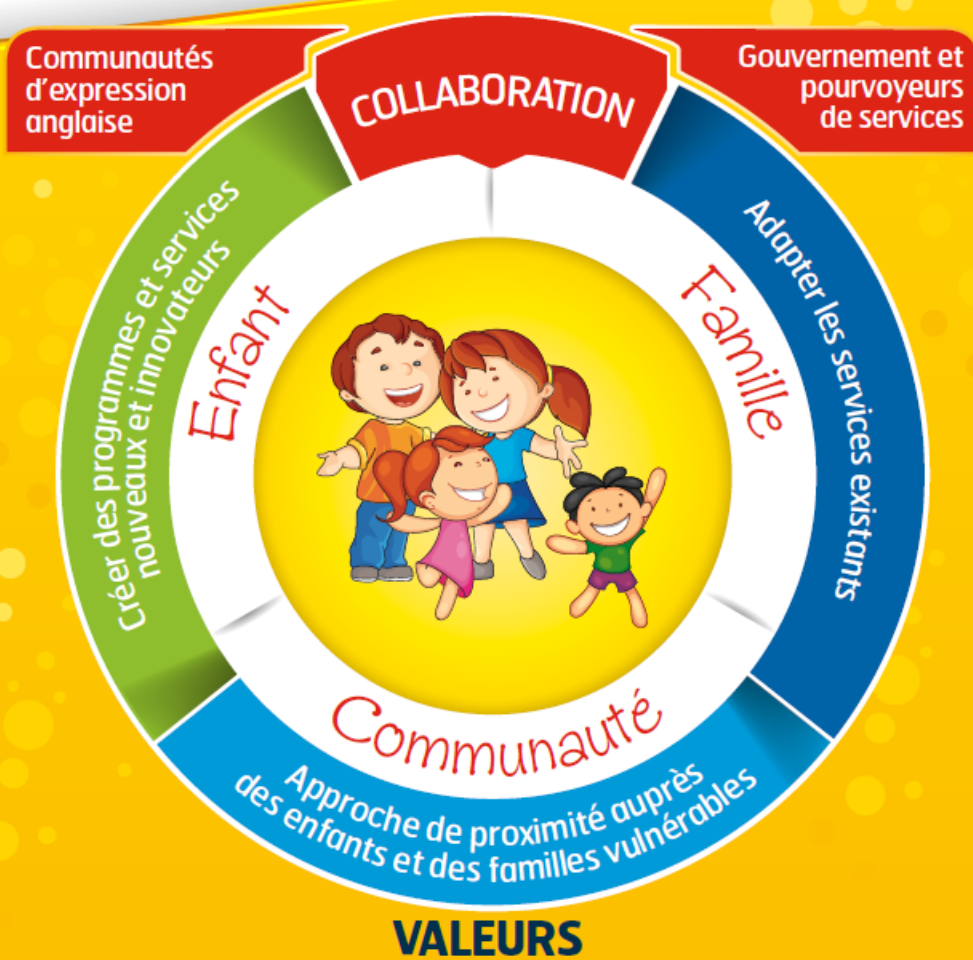
# Bright Beginnings

UNE APPROCHE  
ADAPTÉE AU  
**SOUTIEN DES ENFANTS  
(0-5 ANS)  
D'EXPRESSION ANGLAISE**  
ET DE LEURS **FAMILLES**  
dans la province  
de Québec

AVRIL 2018



Pour le soutien des enfants et des familles d'expression anglaise dans la province de Québec



Modèle élaboré par



Community Health  
And Social Services Network  
Réseau communautaire de santé  
et de services sociaux

Contribution financière de



Santé  
Canada

Health  
Canada

Thank you  
For more information  
Please contact  
Cathy Brown, CASA  
418-752-8057  
[cathy@casa-gaspe.com](mailto:cathy@casa-gaspe.com)