

Early Childhood Session

Montreal Community Forum
30 March 2021

The logo for CHSSN (Community Health And Social Services Network) is located in the bottom right corner. It features the acronym 'CHSSN' in large, bold, white letters on a blue background. Below the acronym, the full name is written in smaller white text: 'Community Health And Social Services Network' and 'Réseau communautaire de santé et de services sociaux'.

CHSSN
Community Health
And Social Services Network
Réseau communautaire de santé
et de services sociaux

Population

1 103 475

2016 Census of Canada
Recensement du Canada, 2016

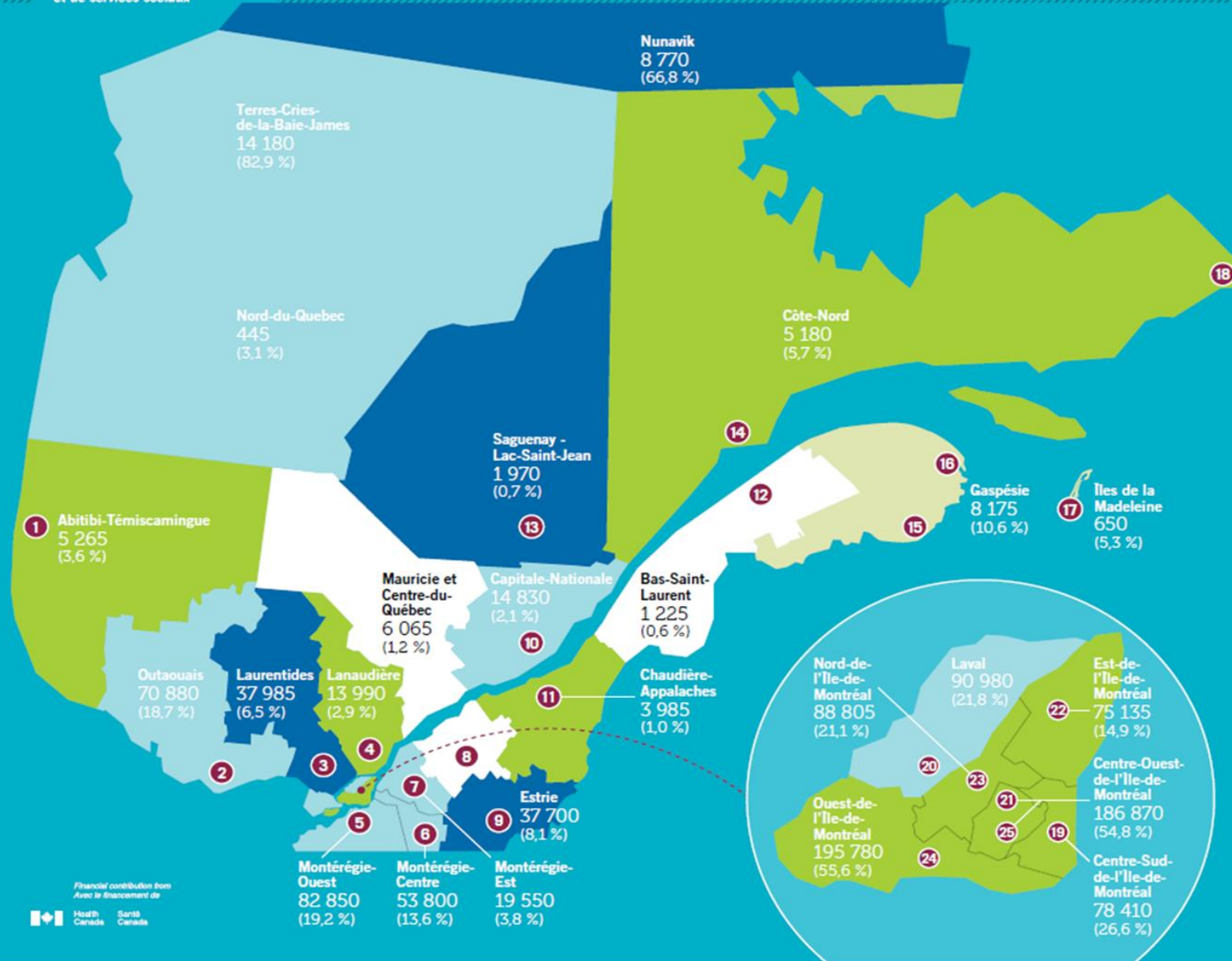
13,7 %

of Quebec
du Québec

The CHSSN NPI* Network

Le réseau NPI* du CHSSN

- 1 **Abitibi-Témiscamingue**
Neighbours Regional Association
 - 2 **Outaouais**
Connexions Resource Centre
 - 3 **Laurentides**
4 Korners Family Resource Center
 - 4 **Lanaudière**
English Community Organization of Lanaudière (ECOL)
 - 5 **Montréal-Ouest**
Montréal West Community Network (MWCN)
 - 6 **Montréal-Centre**
Assistance and Referral Centre (ARC)
 - * 7 **Montréal-Est**
Montréal East Partnership for the English-Speaking Community (MEPEC)
 - 8 **Mauricie et Centre-du-Québec**
Centre for Access to Services in English (CASE)
 - 9 **Estrie**
Townshippers' - Eastern Townships Partner for Health and Social Services - Estrie and ME
 - 10 **Capitale-Nationale**
Jeffery Haie Community Partners
 - 11 **Chaudière-Appalaches**
Mégantic English-speaking Community Development Corp. (MCDC)
 - 12 **Bas-Saint-Laurent**
Heritage Lower Saint Lawrence
 - * 13 **Saguenay-Lac Saint-Jean**
English Community Organization of Saguenay-Lac Saint-Jean
 - 14 **Côte-Nord**
North Shore Community Association (NSCA)
 - 15 **Gaspésie**
Committee for Anglophone Social Action (CASA)
 - 16 **Gaspésie**
Vision Gaspé-Percé Now (VGPN)
 - 17 **Îles de la Madeleine**
Council for Anglophone Magdalen Islanders (CAMI)
 - 18 **Côte-Nord**
Coasters Association (LNSCH)
 - 19 **Centre-Sud-de-l'Île-de-Montréal**
Collective Community Services (CCS)
 - 20 **Laval**
AGAPE - The Youth & Parents AGAPE Association Inc.
 - 21 **Centre-Ouest-de-l'Île-de-Montréal**
African Canadian Development & Prevention Network (ACDPN)
 - 22 **Est-de-l'Île-de-Montréal**
East Island Network for English-language Services (REISA)
 - * 23 **Nord-de-l'Île-de-Montréal**
East Island Network for English-language Services (REISA)
 - * 24 **Ouest-de-l'Île-de-Montréal**
African Canadian Development & Prevention Network (ACDPN)
 - * 25 **Centre-Ouest-de-l'Île-de-Montréal**
NDG Senior Citizens' Council (NDGSCC)
- * Network in development.



Early Childhood Youth Families



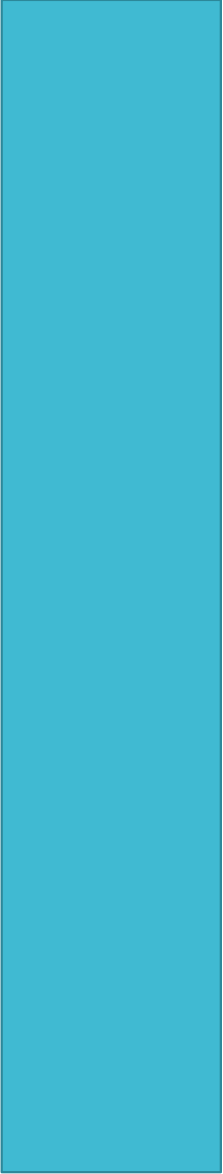
Healthy Early Years (HEY) CHSSN Program



Agence de la santé
publique du Canada

Public Health
Agency of Canada





Partnerships
Collaborations

Program
Delivery

Knowledge
Products and
Tools

Partnerships and Collaborations

naître
ET grandir



Fédération
québécoise des
organismes
communautaires
Famille

PriorityParents

Always there for you

fqocf.org/priorityparents
or 1 800 361-5085 (LigneParents 24/7)

Association
québécoise
des
CPE

Collectif
petite
enfance

Regroupement
POUR LA Valorisation
DE LA Paternité

Partnerships and Collaborations

Alphabétisation Québec



Literacy Quebec



*Secrétariat aux relations
avec les Québécois
d'expression anglaise*

Québec 

*Éducation
et Enseignement
supérieur*

Québec 

Famille

Québec 



Program Delivery

Early Childhood
and Youth
Programs

23

Parenting
Support
Programs

28

Knowledge Products and Tools

Institut de la statistique du Québec

Time for the big leap.

Vulnerability and English-speaking children in kindergarten

Presentation of EQDEM and 0-5 portrait results for english-speaking children, organised by the Community Health and Social Services Network

Amélie Groleau
Institut de la statistique du Québec

November 29, 2019

