

The Centre d'expertise sur l'adaptation aux
communautés d'expression anglaise en santé et
services sociaux (CE-ACCESS)



Améliorer l'accès par le savoir
Improving access through knowledge

The Geodata project presents: **Mapping
the vulnerable English-speaking
population of Quebec**

The Géodata project is financed by



Santé
Canada

Health
Canada

Geodata: Assessing the socio-economic context

Describing the socio-economic context

- 1) Baseline univariate descriptions provide insight on the basic characteristics and issues of the English-speaking population.
- 2) Multivariate assessments of associated factors provide insights on how these issues occur and contribute to an understanding of service needs.

Both are required to provide tangible information for adaptive policy measures.



The data model for establishing contextual profiles

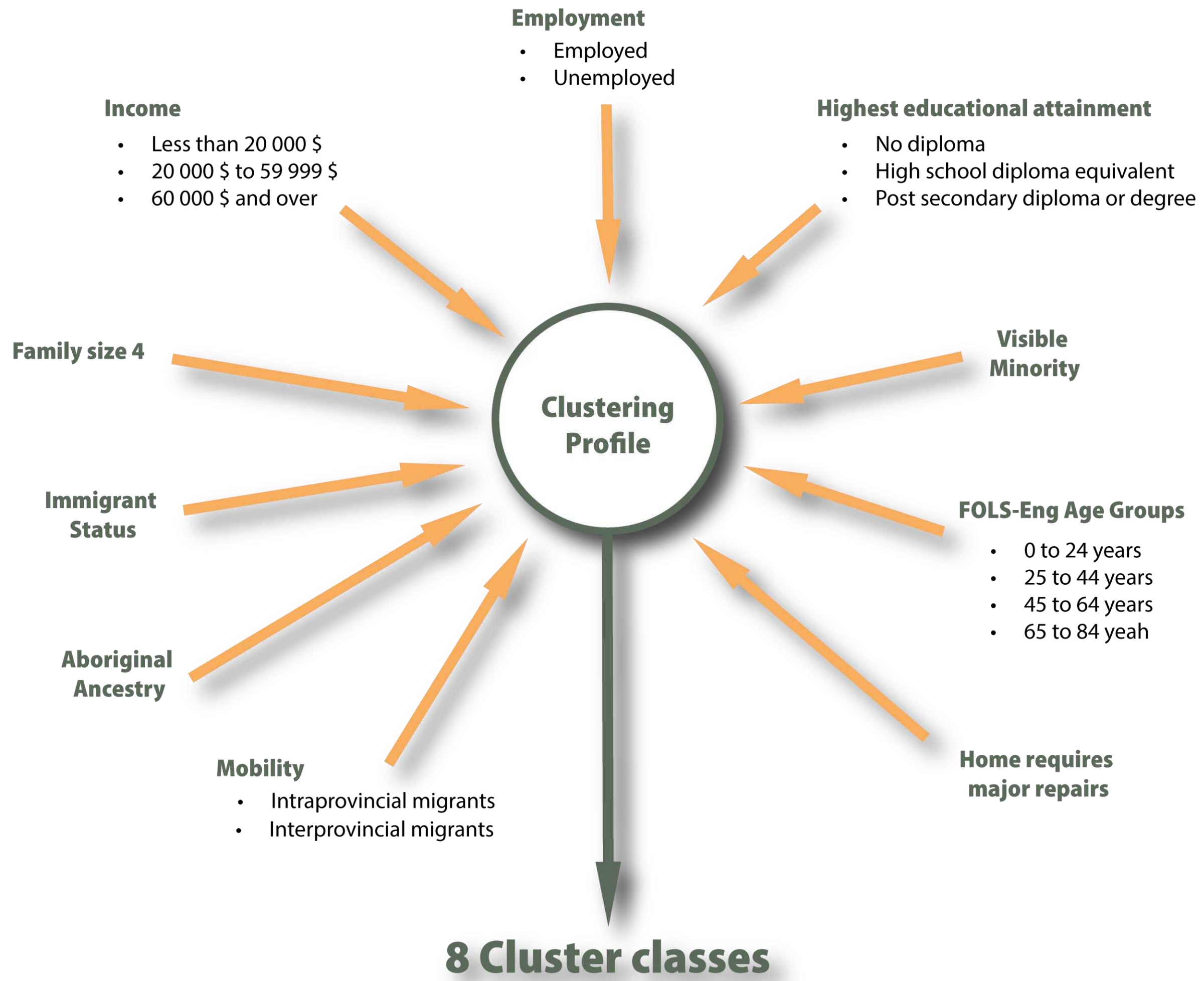


Statistics Canada data from the 2016 census (100% sample and 25% sample data)

- First official language spoken and 11 age groups
- 380 social determinants of health
- Census Canada and Quebec health geographies

Geodata unique neighbourhood geography for assessing local populations

- urban census tracts in high density population areas
- Census subdivisions or municipalities in less densely populated areas
- Network of 2507 geographic areas.

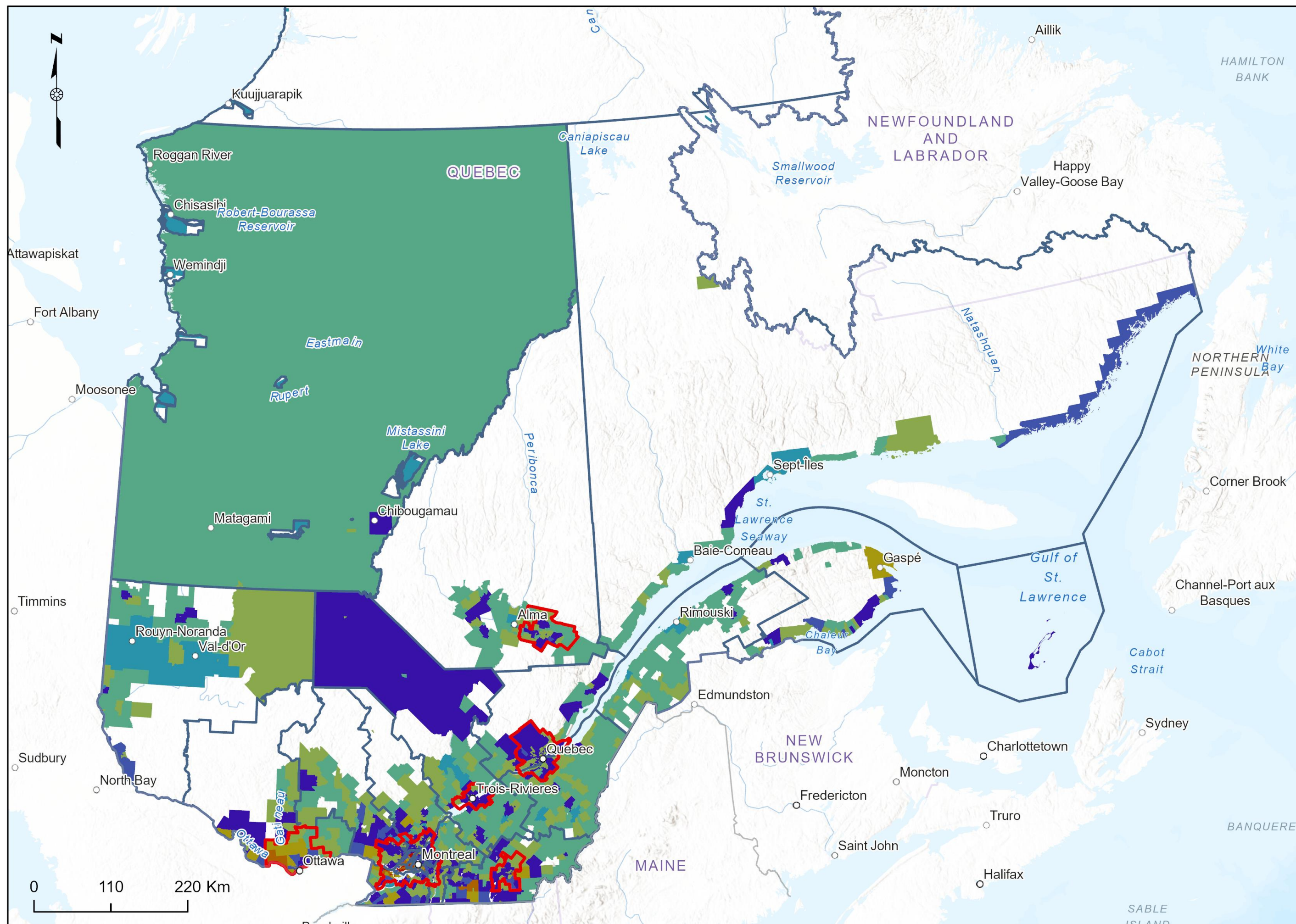


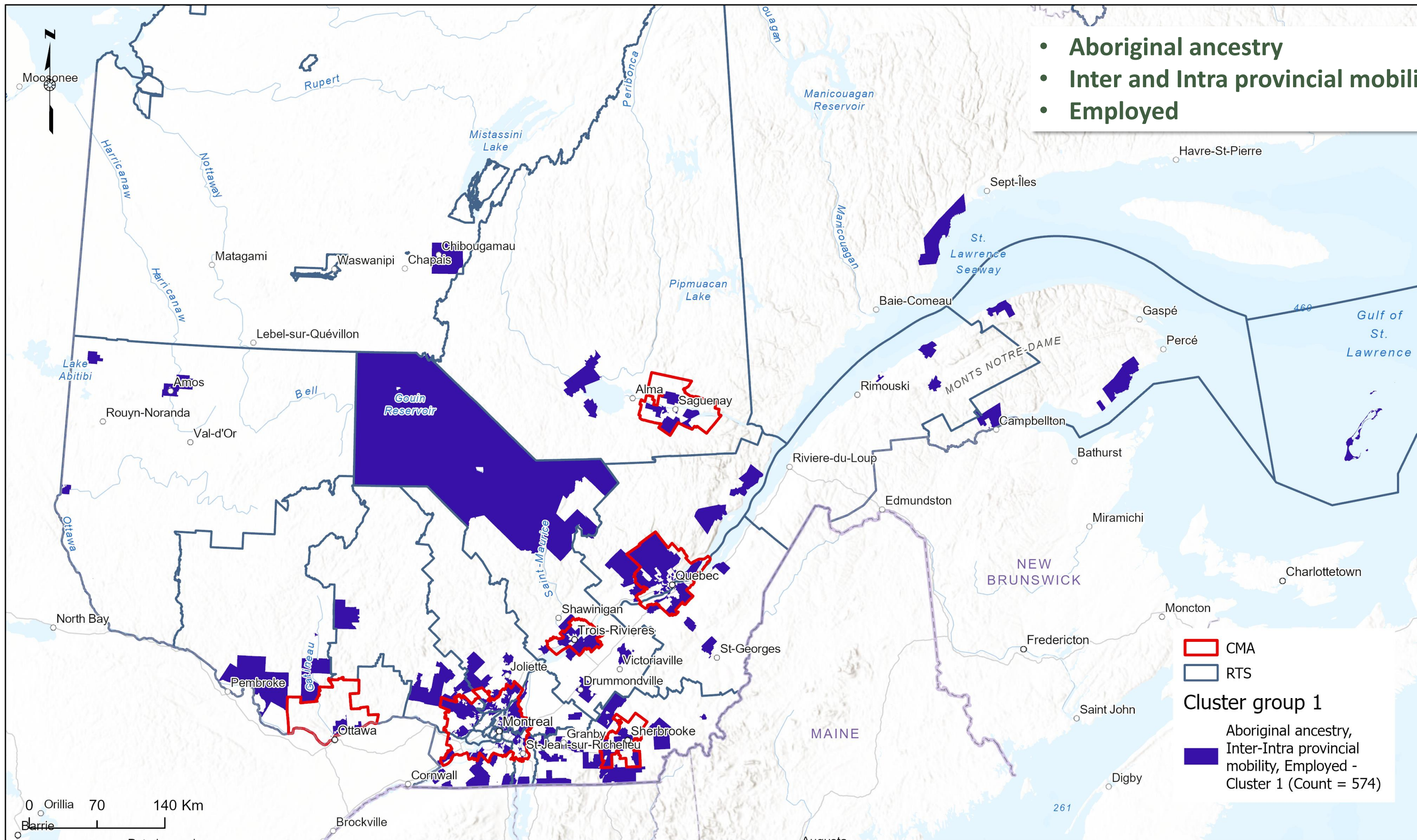
Cluster Groups

- CMA
- RTS

8 Cluster groups

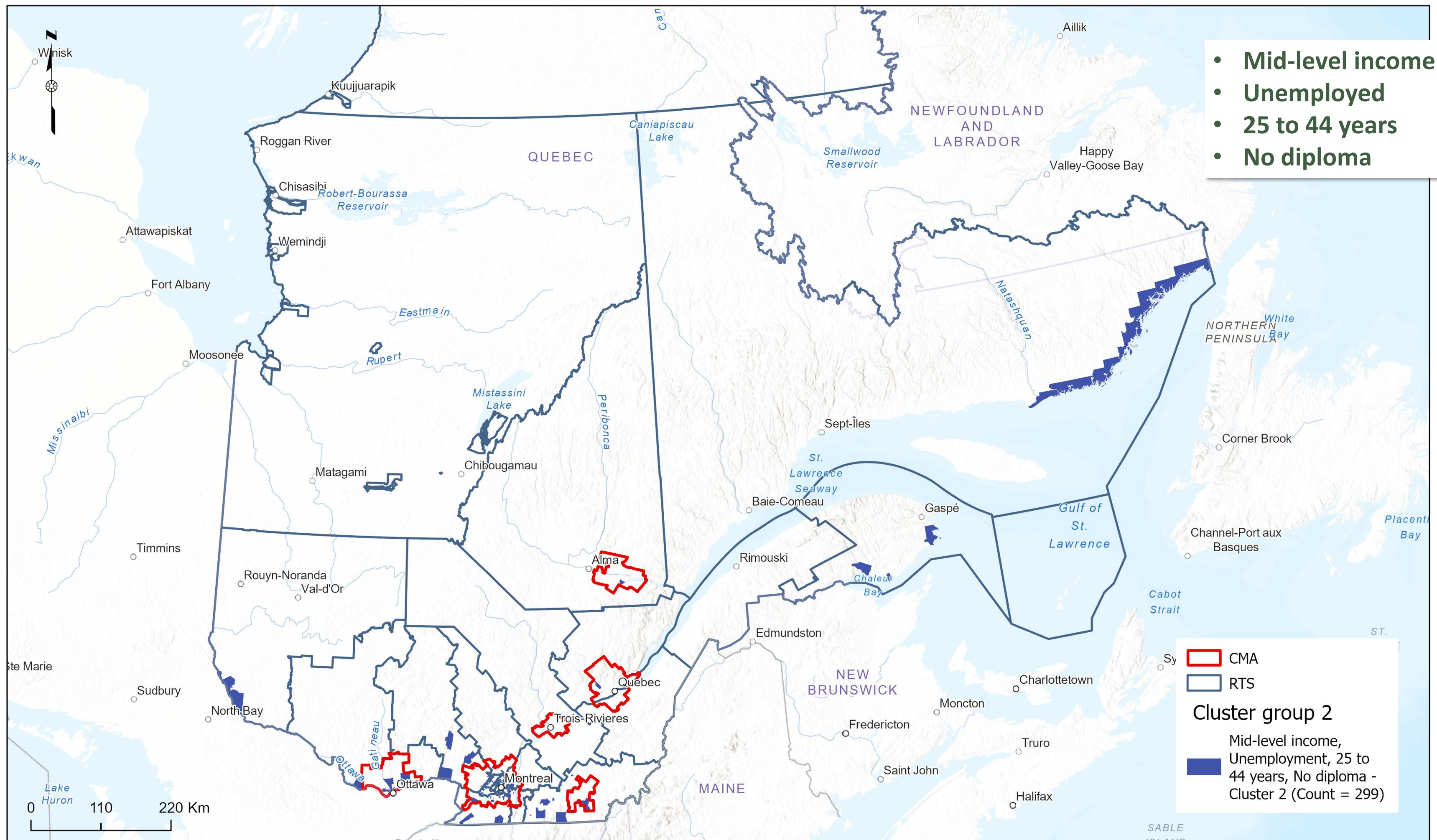
- Aboriginal ancestry, Inter-Intra provincial mobility, Employed - Cluster 1 (Count = 574)
- Mid-level income, Unemployment, 25 to 44 years, No diploma - Cluster 2 (Count = 299)
- Aboriginal ancestry, No diploma, Home requiring major repairs, Unemployment - Cluster 3 (Count = 46)
- Aboriginal ancestry, Interprovincial mobility, Visible minorities, Intraprovincial mobility - Cluster 4 (Count = 561)
- Aboriginal ancestry, Inter-Intra provincial mobility, Visible minorities - Cluster 5 (Count = 520)
- Interprovincial migrants, 25 to 44 years, Post secondary education, Employment - Cluster 6 (Count = 148)
- Immigrants, High school diploma, Mid-level income. Visible minorities - Cluster 7 (Count = 113)
- Post secondary education, High income (60k+), Employment, 45 to 64 years - Cluster 8 (Count = 37)





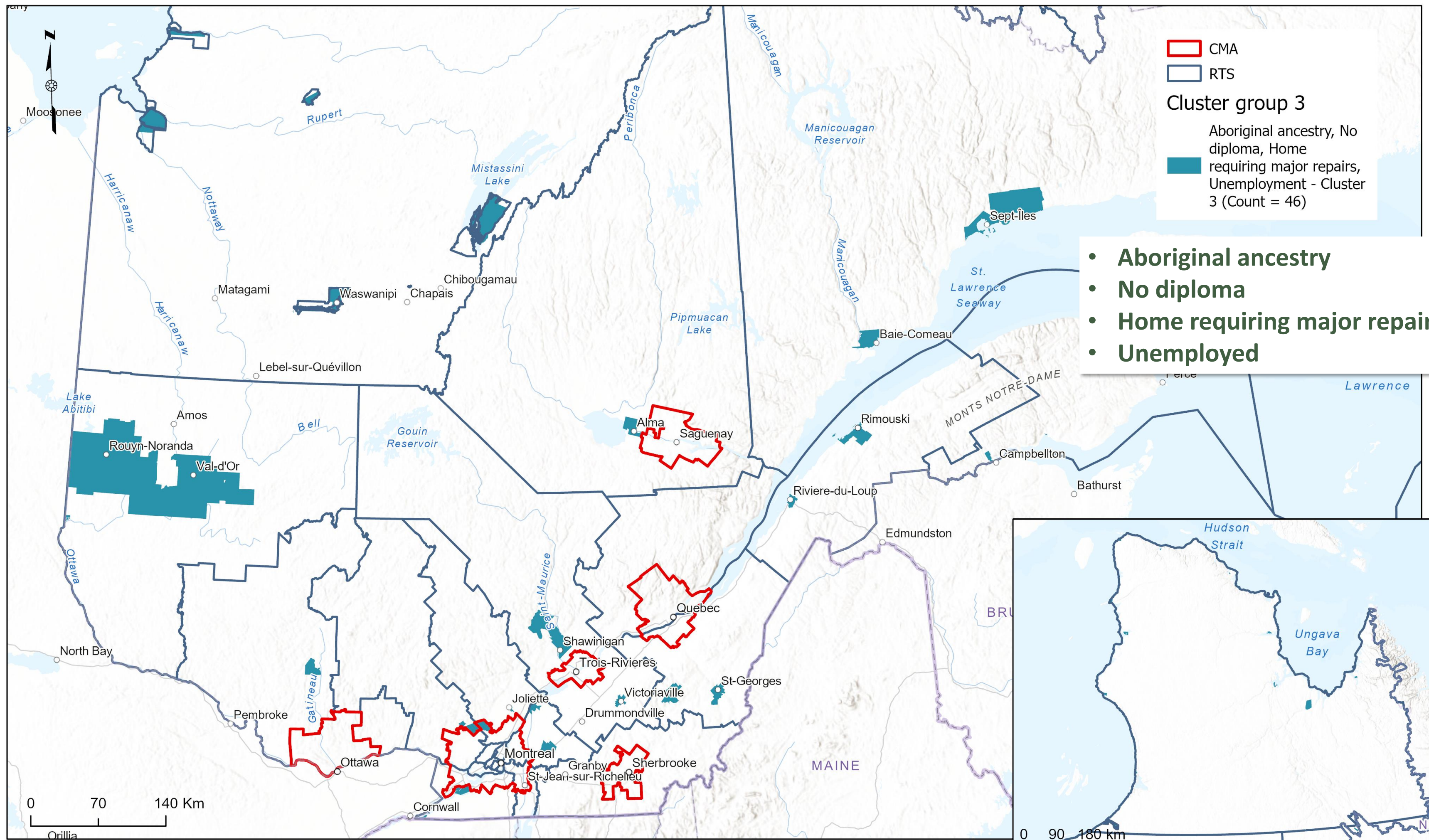
- **Aboriginal ancestry**
- **Inter and Intra provincial mobility**
- **Employed**

CMA
 RTS
Cluster group 1
 Aboriginal ancestry,
 Inter-Intra provincial
 mobility, Employed -
 Cluster 1 (Count = 574)



- Mid-level income
- Unemployed
- 25 to 44 years
- No diploma

CMA
 RTS
Cluster group 2
 Mid-level income,
 Unemployment, 25 to
 44 years, No diploma -
 Cluster 2 (Count = 299)



CMA
 RTS

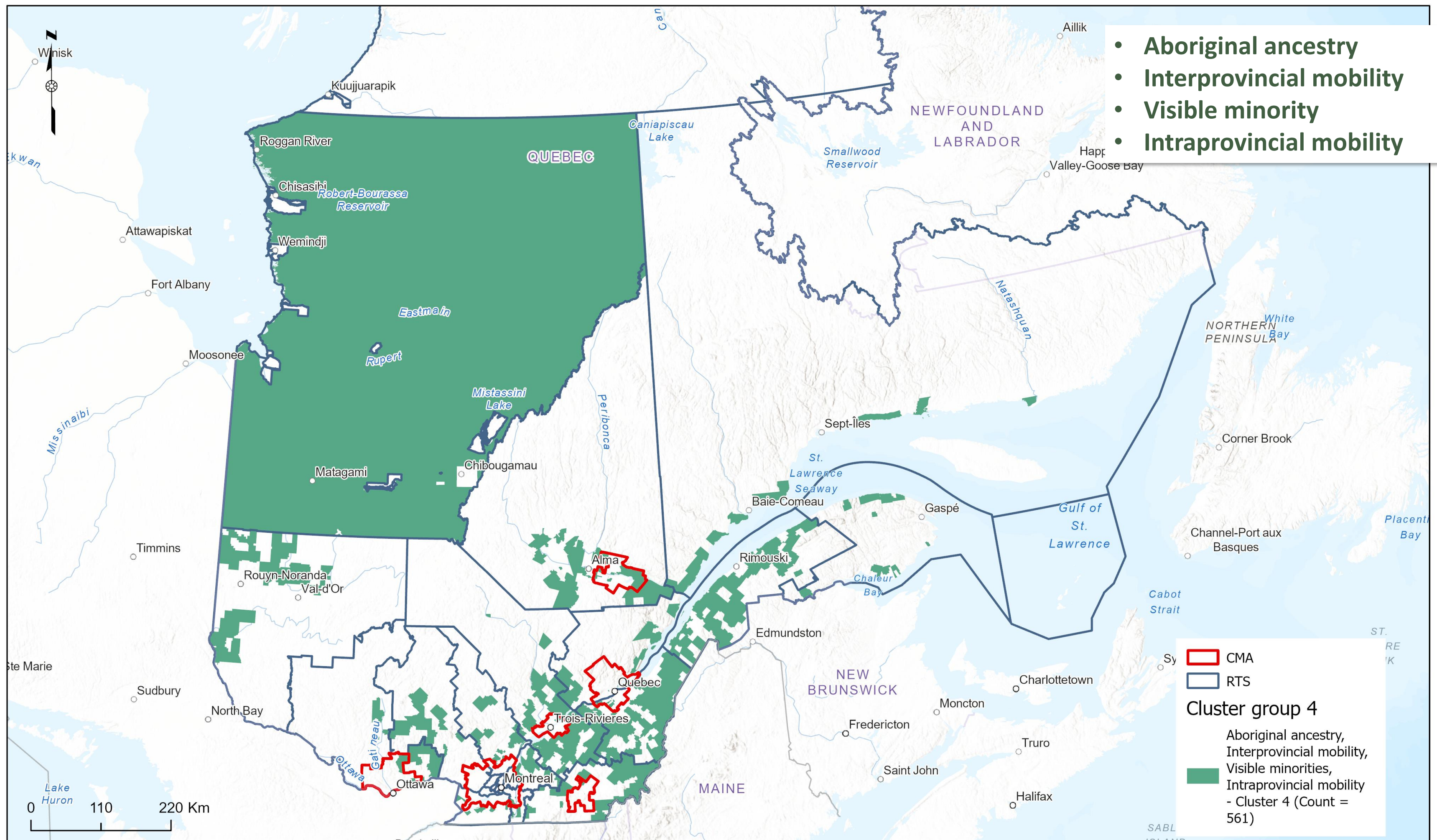
Cluster group 3

Aboriginal ancestry, No diploma, Home requiring major repairs, Unemployment - Cluster 3 (Count = 46)

- **Aboriginal ancestry**
- **No diploma**
- **Home requiring major repairs**
- **Unemployed**

0 70 140 Km

0 90 180 km



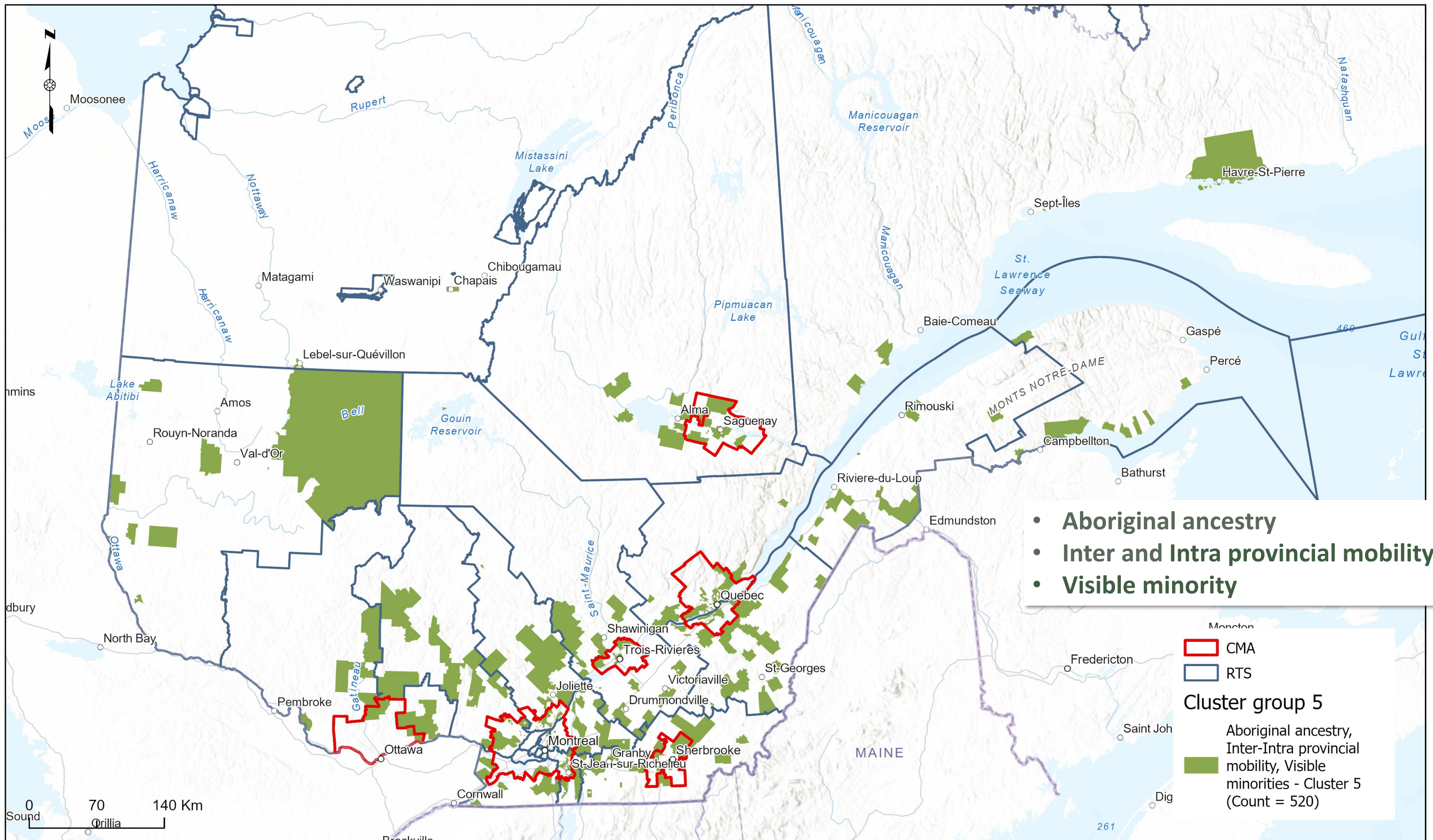
- Aboriginal ancestry
- Interprovincial mobility
- Visible minority
- Intraprovincial mobility

CMA
 RTS

Cluster group 4

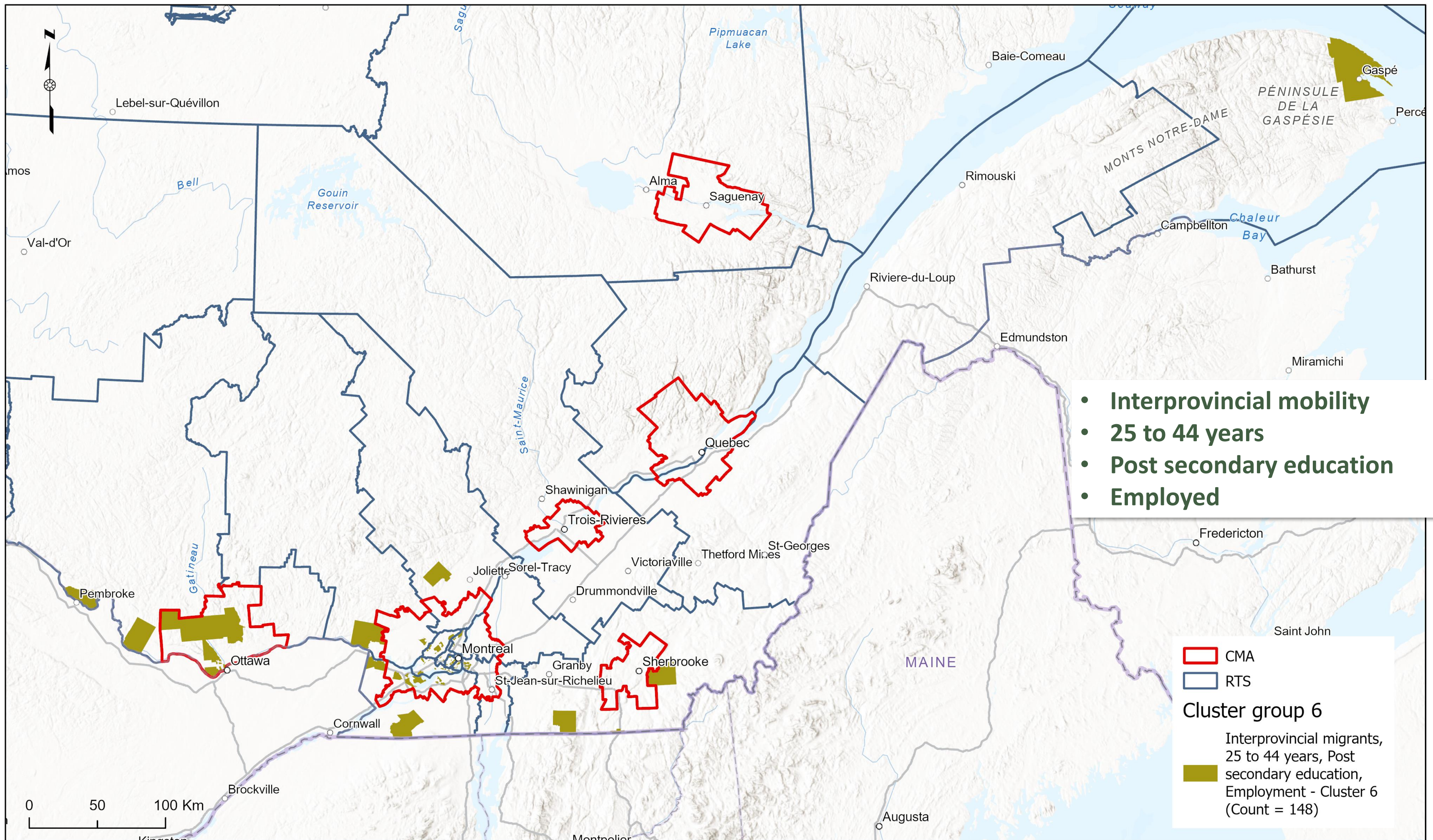
Aboriginal ancestry,
Interprovincial mobility,
Visible minorities,
Intraprovincial mobility
- Cluster 4 (Count = 561)





- **Aboriginal ancestry**
- **Inter and Intra provincial mobility**
- **Visible minority**

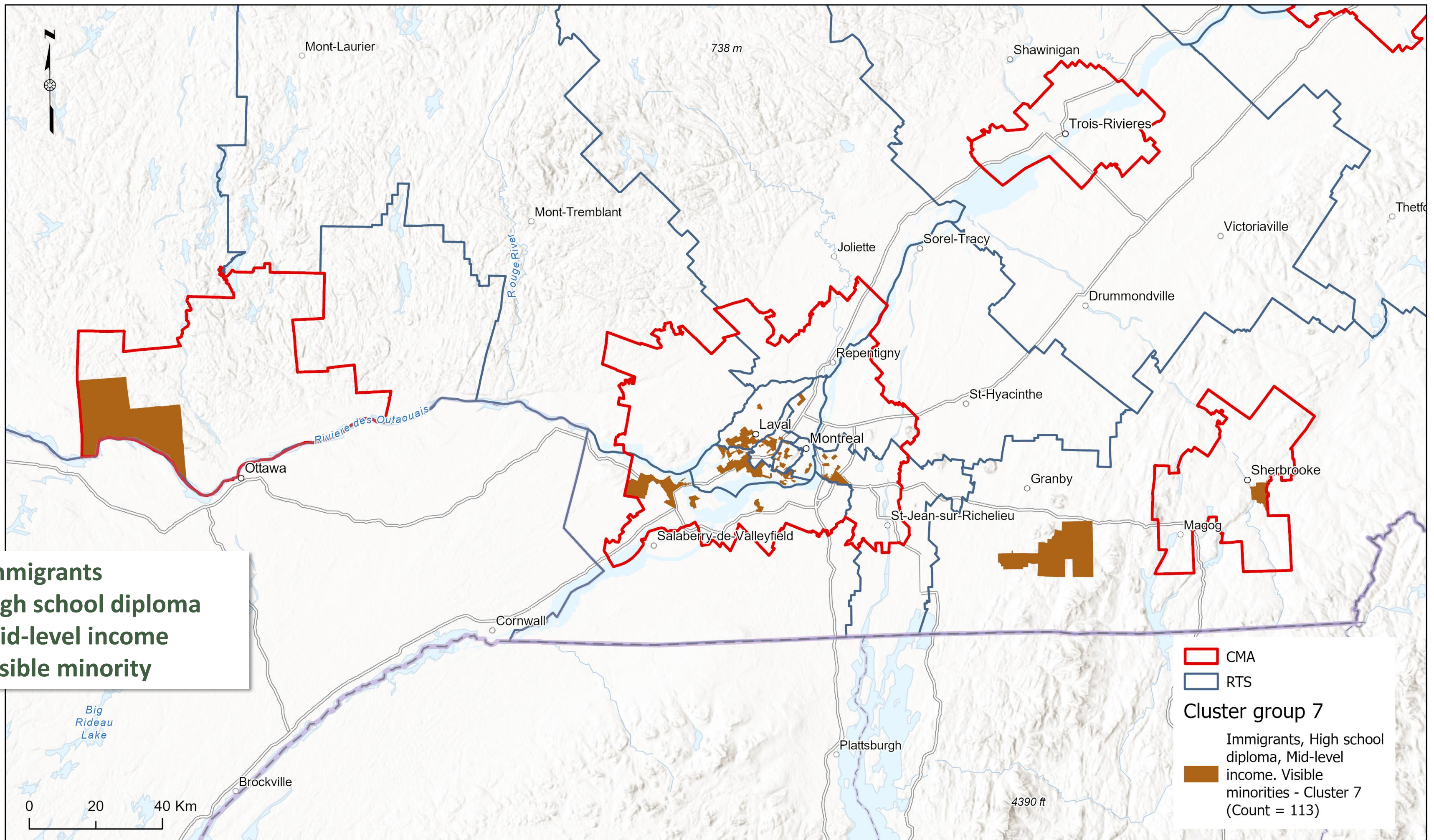
CMA
 RTS
Cluster group 5
 Aboriginal ancestry, Inter-Intra provincial mobility, Visible minorities - Cluster 5 (Count = 520)



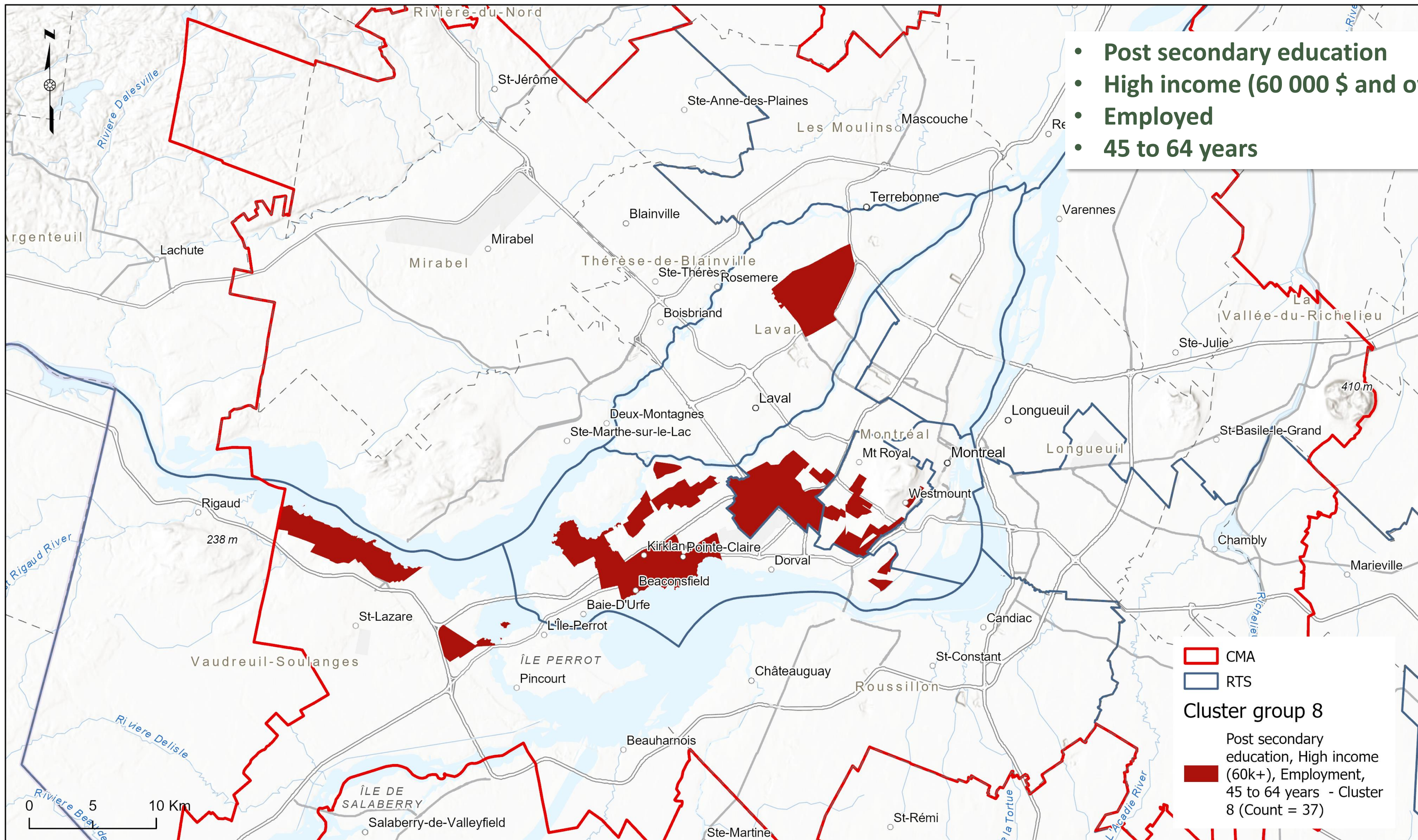
- **Interprovincial mobility**
- **25 to 44 years**
- **Post secondary education**
- **Employed**

CMA
 RTS
Cluster group 6
 Interprovincial migrants,
 25 to 44 years, Post
 secondary education,
 Employment - Cluster 6
 (Count = 148)

0 50 100 Km



- Immigrants
- High school diploma
- Mid-level income
- Visible minority



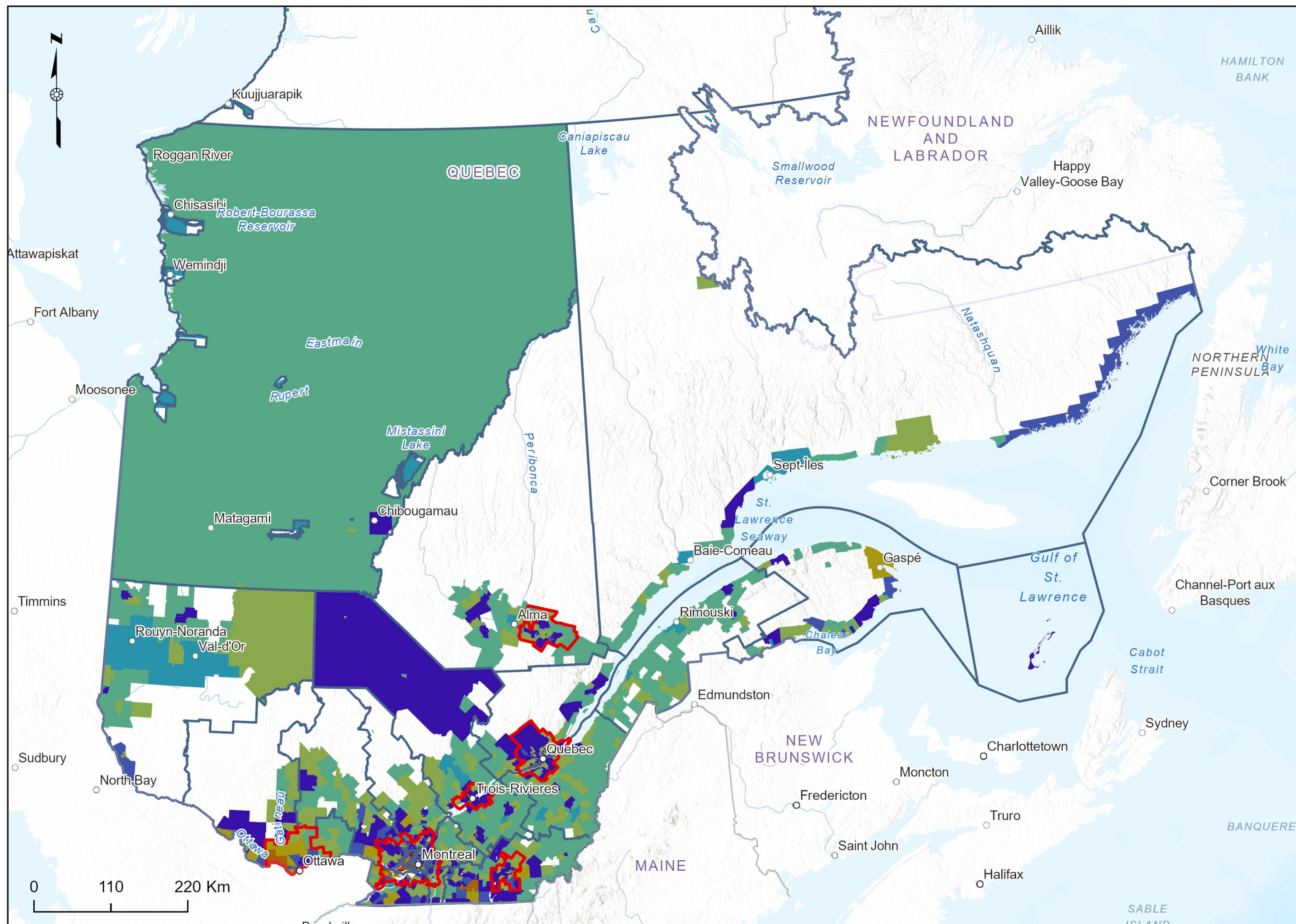
- Post secondary education
- High income (60 000 \$ and over)
- Employed
- 45 to 64 years

Cluster Groups

- CMA
- RTS

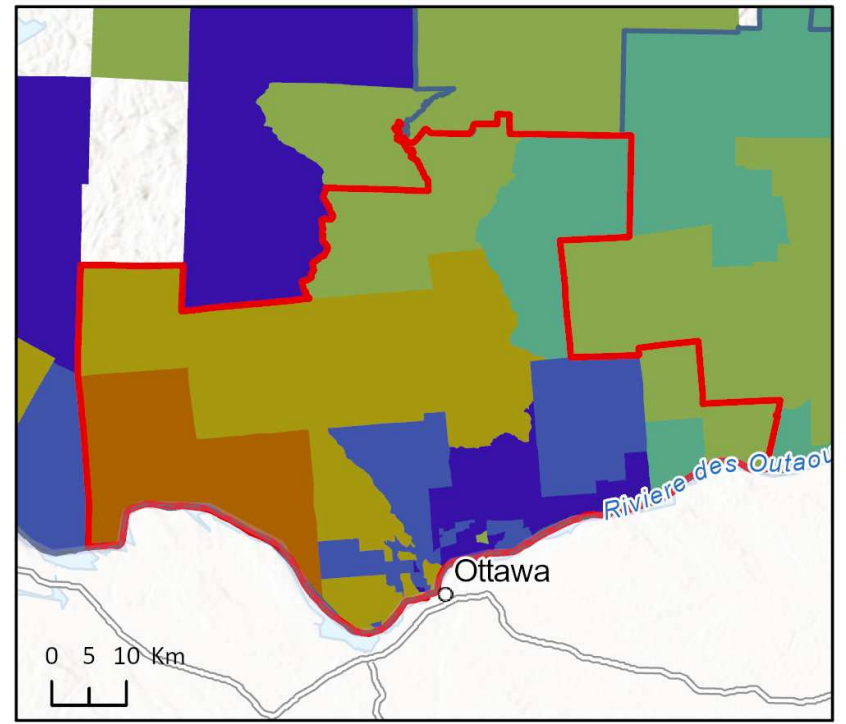
8 Cluster groups

- Aboriginal ancestry, Inter-Intra provincial mobility, Employed - Cluster 1 (Count = 574)
- Mid-level income, Unemployment, 25 to 44 years, No diploma - Cluster 2 (Count = 299)
- Aboriginal ancestry, No diploma, Home requiring major repairs, Unemployment - Cluster 3 (Count = 46)
- Aboriginal ancestry, Interprovincial mobility, Visible minorities, Intraprovincial mobility - Cluster 4 (Count = 561)
- Aboriginal ancestry, Inter-Intra provincial mobility, Visible minorities - Cluster 5 (Count = 520)
- Interprovincial migrants, 25 to 44 years, Post secondary education, Employment - Cluster 6 (Count = 148)
- Immigrants, High school diploma, Mid-level income. Visible minorities - Cluster 7 (Count = 113)
- Post secondary education, High income (60k+), Employment, 45 to 64 years - Cluster 8 (Count = 37)

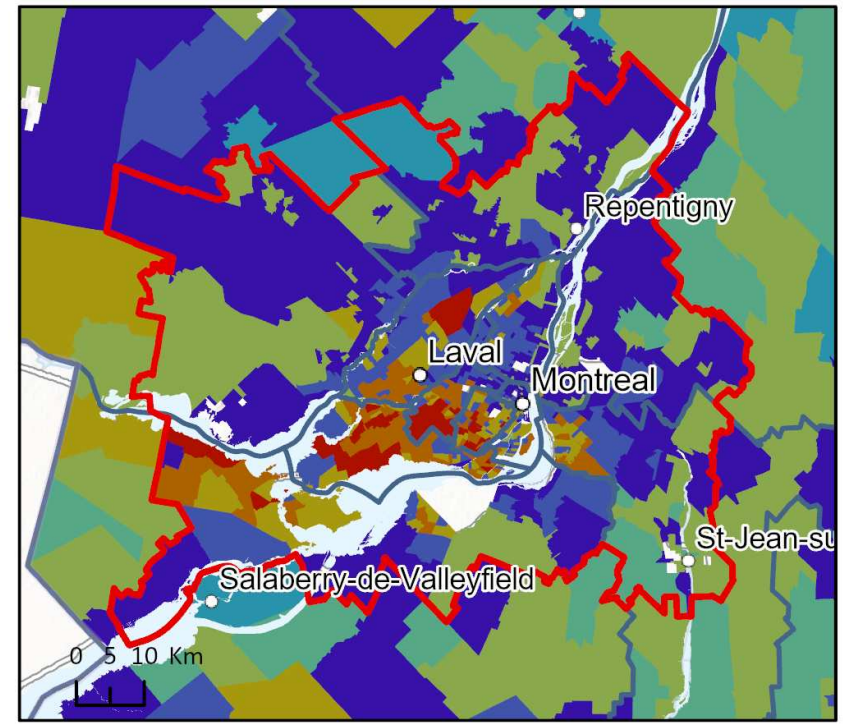


Cluster Groups by Census Metropolitan Area

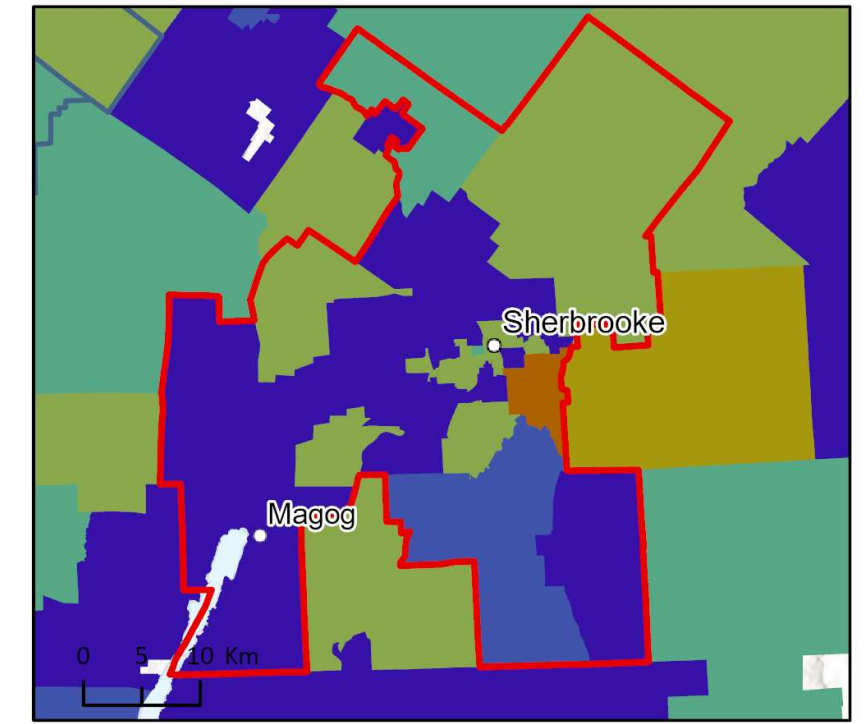
Ottawa - Gatineau (Quebec part)
 FOLS-Eng = 58 465 Tot pop = 328 925



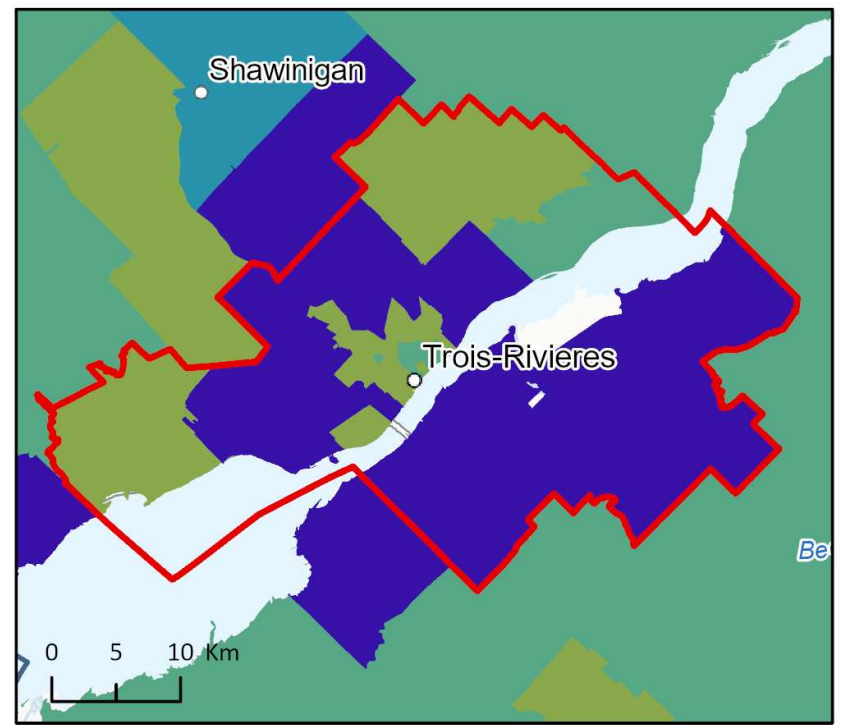
Montréal
 FOLS-Eng = 888 380 Tot pop = 4 053 275



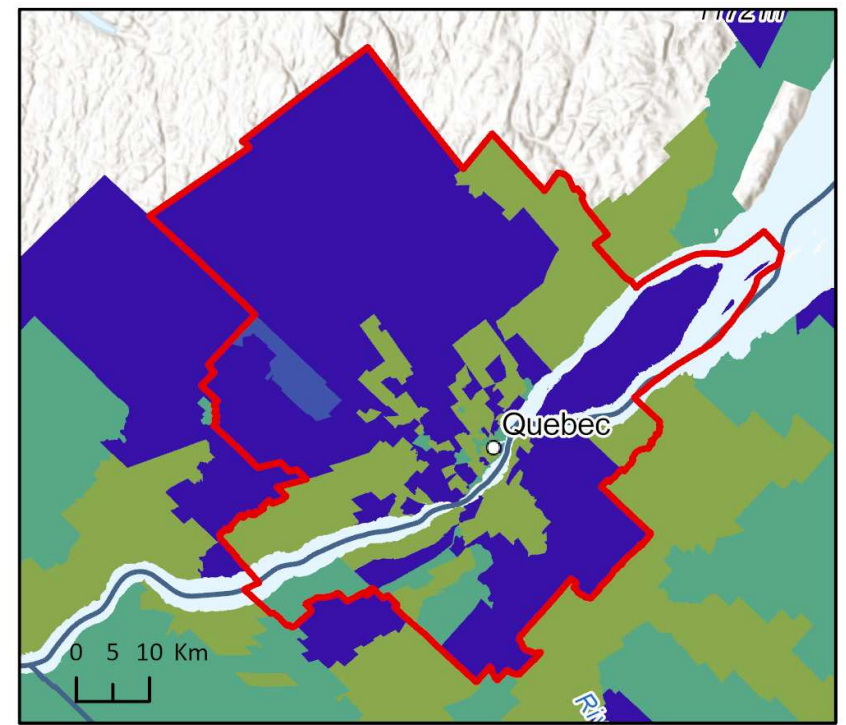
Sherbrooke
 FOLS-Eng = 12 535 Tot pop = 209 160



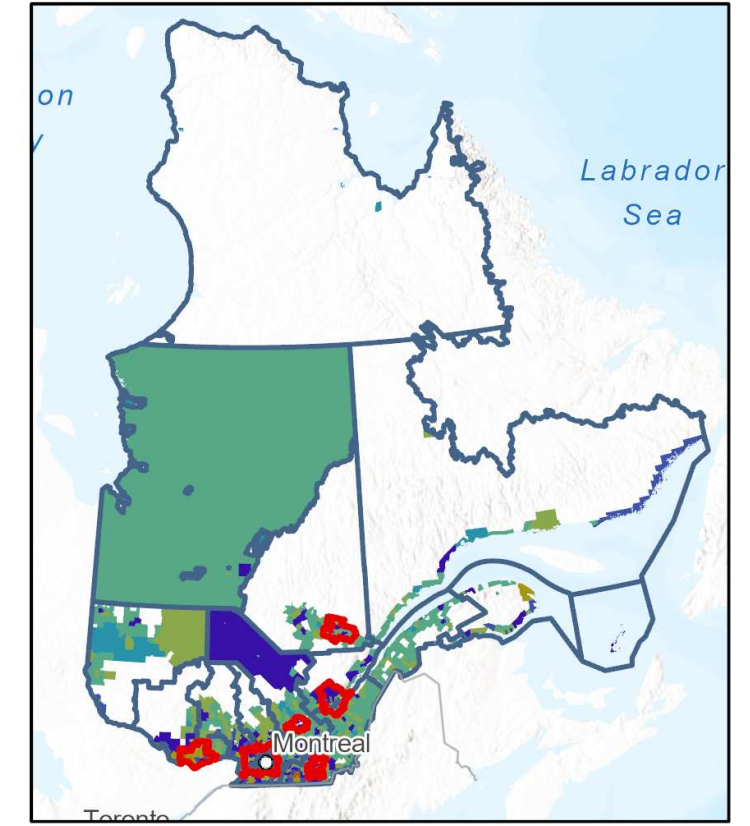
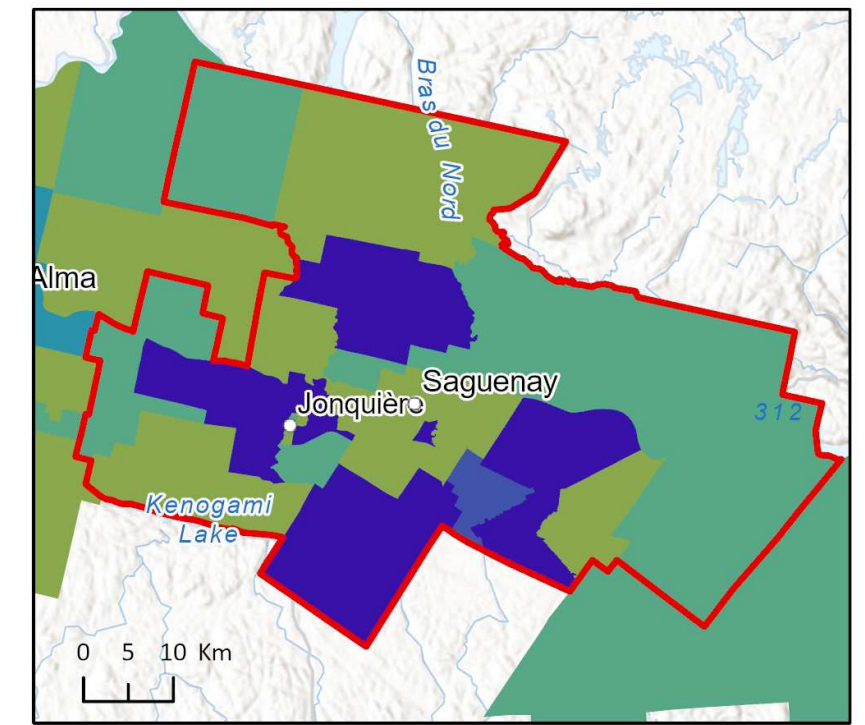
Trois-Rivières
 FOLS-Eng = 2 130 Tot pop = 153 960



Québec
 FOLS-Eng = 15 870 Tot pop = 789 315



Saguenay
 FOLS-Eng = 1 580 Tot pop = 159 240



- CMA
- RTS
- 8 Cluster groups by CMA
- Aboriginal ancestry, Inter-Intra provincial mobility, Employed - Cluster 1 (Count = 574)
- Mid-level income, Unemployment, 25 to 44 years, No diploma - Cluster 2 (Count = 299)
- Aboriginal ancestry, No diploma, Home requiring major repairs, Unemployment - Cluster 3 (Count = 46)
- Aboriginal ancestry, Interprovincial mobility, Visible minorities, Intraprovincial mobility - Cluster 4 (Count = 561)
- Aboriginal ancestry, Inter-Intra provincial mobility, Visible minorities - Cluster 5 (Count = 520)
- Interprovincial migrants, 25 to 44 years, Post secondary education, Employment - Cluster 6 (Count = 148)
- Immigrants, High school diploma, Mid-level income. Visible minorities - Cluster 7 (Count = 113)
- Post secondary education, High income (60k+), Employment, 45 to 64 years - Cluster 8 (Count = 37)

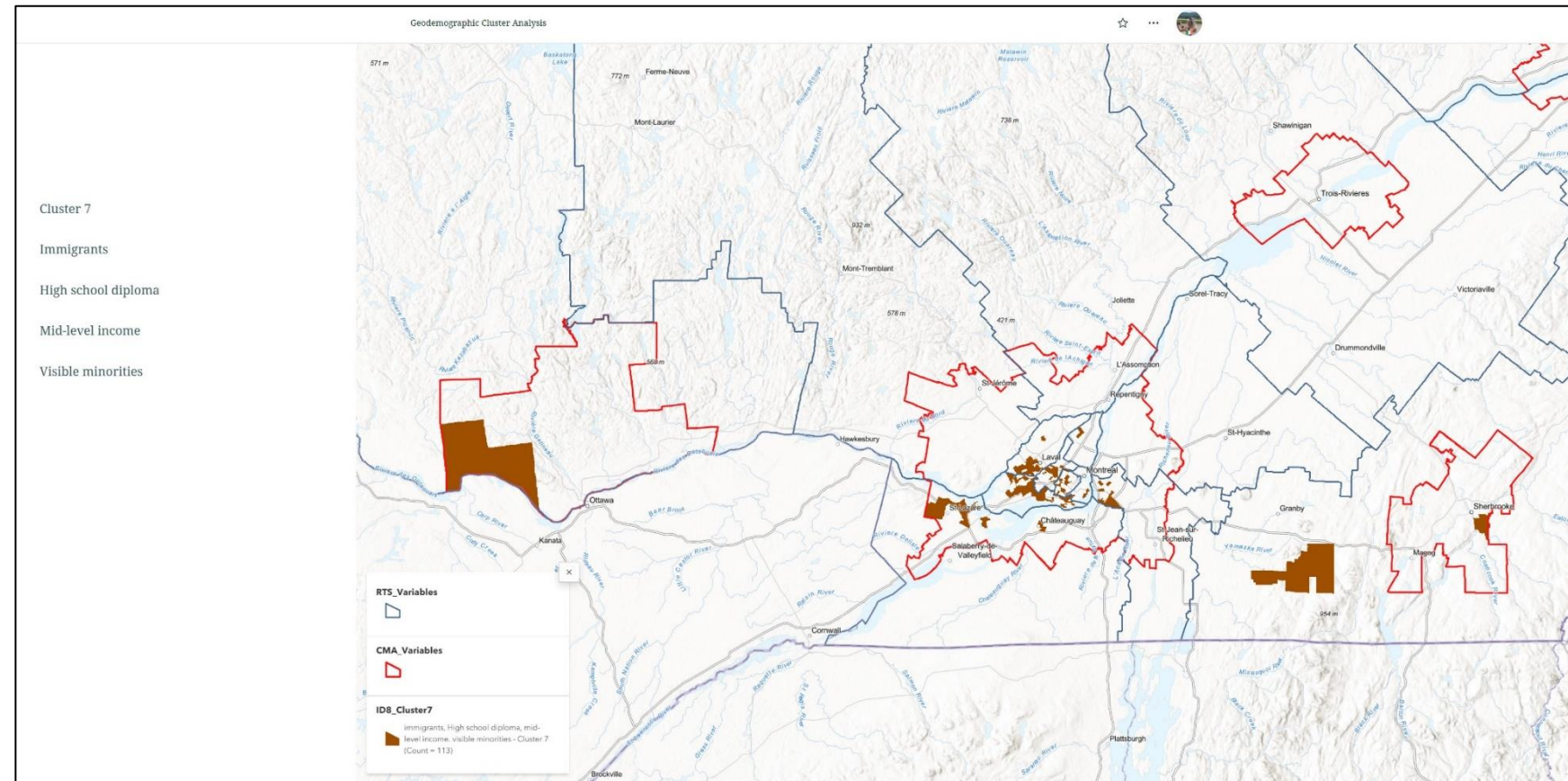
Esri, Garmin, FAO, NOAA, USGS, EPA, NRCan, Parks Canada, Esri Canada, Esri, HERE, Garmin, SafeGraph, FAO, METI/NASA, USGS, EPA, NPS, NRCan, Parks Canada, Province of Ontario, Esri Canada, Esri, HERE, Garmin, FAO, NOAA, USGS, EPA, NPS, NRCan, Parks Canada, Ville de Montréal, Esri Canada, Esri, HERE, Garmin, FAO, NOAA, USGS, EPA, NPS, NRCan, Parks Canada, Esri Canada, Esri, HERE, Garmin, FAO, NOAA, USGS, EPA, NPS, NRCan, Parks Canada, Esri, USGS

Pop-up menu

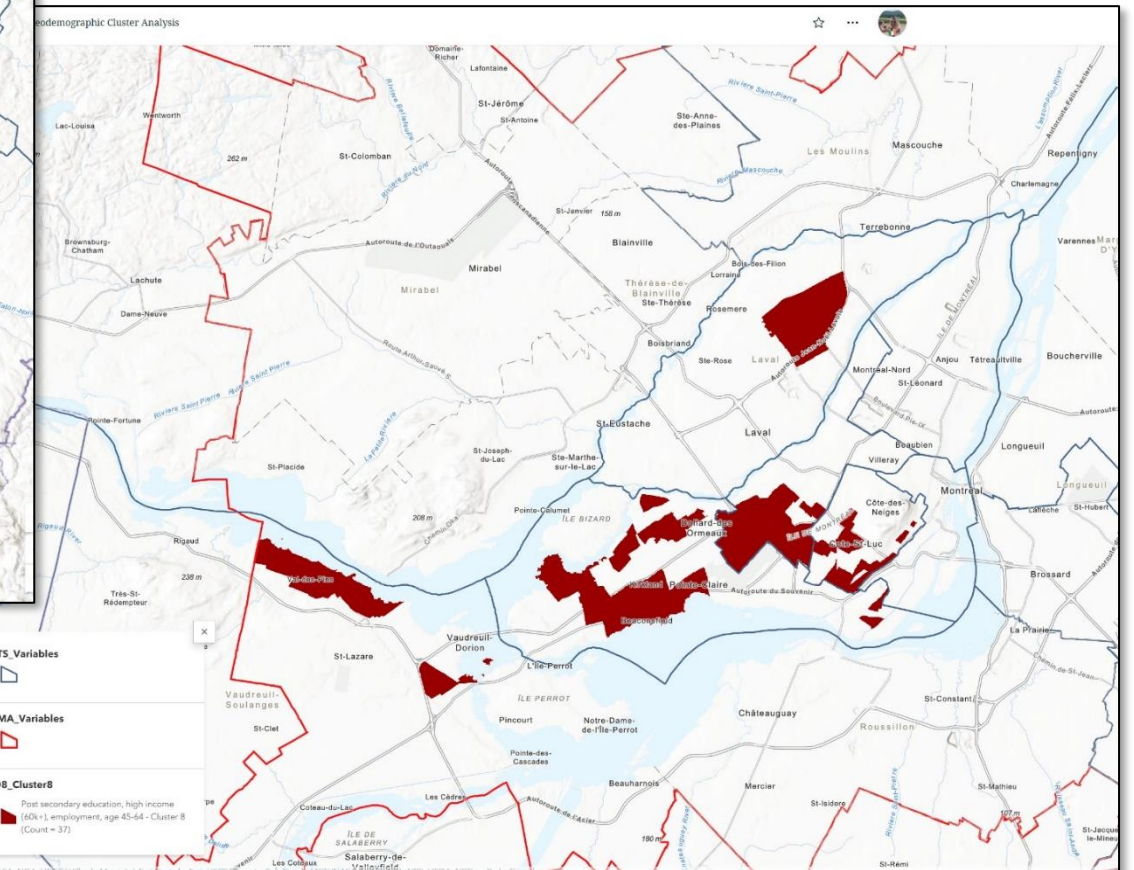
Quebec / Québec	
CTCSUID	geo2403005
OID_	32.000000
PRUID	
PRNAME	
newctscd	2403005
CTUID_CSDUID	
geotcsd	
CTCSUID	
UniquelD	32.000000
T1English_Desc	Gaspé (2403005) V 00000 (3.3%)
T1ERUID	2410.000000
TotPop	14,300
TotFOLsmin	1,660
Fam4	65
Inclss20K	410
Inc20K_59K	380
Inc60Kpls	105
Immig	35
AborAnc	35
Vismin	45
HomeMjrRprs	100
NaDplma	535
HSdpl	355
PstHSdpl	610
Unemploy	90
Employ	65

Web App : Story map

Dynamic maps for each cluster

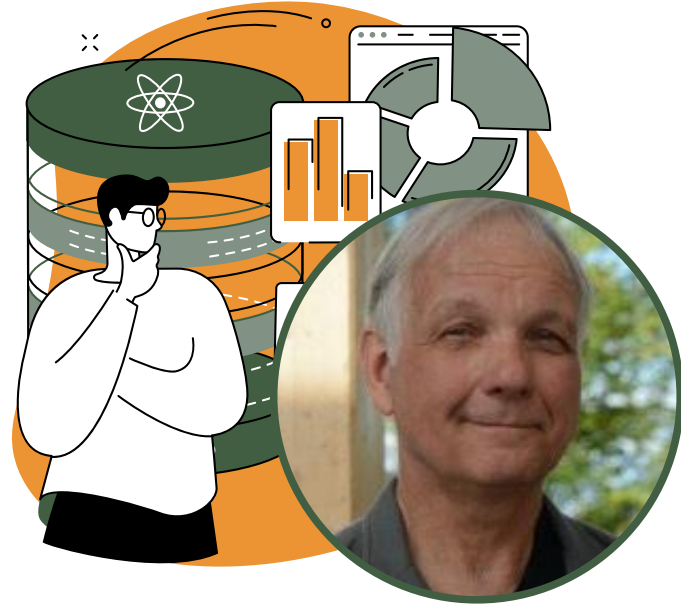


Providing context to the data

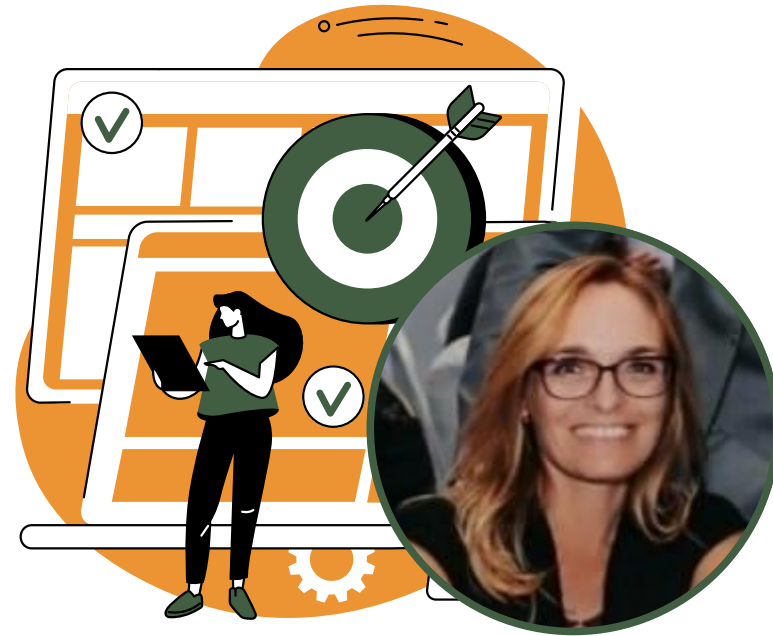


<https://storymaps.arcgis.com/stories/8e3d5aa678104a409f449c1320c697b0>

The Géodata team



Jan Warnke,
Analyst and data model
manager



Laura-Lee Bolger,
G.I.S. Analyst



Jean-François Richard,
Project Director



Melina Papalampoulou-Tsiridou,
Project Manager

Thank you !



access

Améliorer l'accès par le savoir
Improving access through knowledge